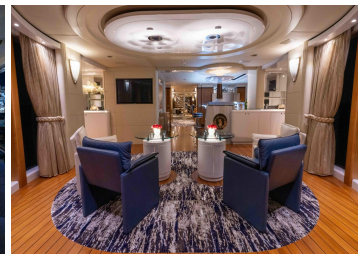


4 ROSES



2004 OCEANFAST

LOA:	185' (56.39m)	Delivery/Model	2004
Beam:	33' 10" (10.31m)	Year:	
Max Draft:	10' 6" (3.2m)	Model:	Full Displacement
Tonnage:	917.00	Builder:	OCEANFAST
Speed:	12 Knots 15 Knots	Type:	Motor Yacht
Flag:	Marshall Islands	Staterooms:	6
Location:	Fort Lauderdale, Florida United States	Fuel Cap:	34945 Gal
VAT Paid:	No Duty Paid	Water Cap:	7176 Gal
Price:	\$18,500,000 USD	Engines:	2x, Caterpillar, 3512B, 1750 HP

Additional Specifications For 4 ROSES:

LOA:	185' (56.39m)	Delivery/Model	2004
Beam:	33' 10" (10.31m)	Year:	
Max Draft:	10' 6" (3.2m)	Year Built:	2004
Hull Material:	Steel	Builder:	OCEANFAST
Hull Config:	Full Displacement	Model:	Full Displacement
Hull Designer:	Austal Ships	Type:	Motor Yacht
Tonnage:	917.00	Engines:	1750 HP, Twin, Inboard, Diesel, Caterpillar, 3512B, 2500hrs / 2500hrs
Range At Cruise	5000	Staterooms:	6
Speed:		Sleeps:	12
Range At Max		Heads:	7
Speed:	Cruising 12 Knots	Crew Quarters:	8
	Max 15 Knots	Crew Berths:	14
Int Designer:	Sam Sorgiovanni (Australia)	Captain Cabin:	Yes
Ext Designer:	Jon Bannenberg (UK) / Craig Beale (Australia)	Classifications:	
Fuel Capacity:	34945 Gal	MCA: ISM:	
Water Capacity:	7176 Gal		
Holding Tank:	3963 Gal		
Flag:	Marshall Islands		
Location:	Fort Lauderdale, Florida United States		
Price:	\$18,500,000 USD		
Tax Status:	No Duty Paid		

Overview

The overall layout of this 185' Oceanfast has entertaining and outside areas which are very innovative allowing maximum use of the space and provides many different areas on the yacht for the owner/guests to be, whether for private sitting/sunning or with the group.

Owner's Cabin

The Owner's cabin is situated aft on the upper deck. This is truly a magic area with a 180-degree panoramic view from ceiling to floor windows, an outside private deck with ample seating and dining area. The Owner's cabin is enormous with stunning views, an en suite that has to be seen to be believed, from the huge circular honey onyx Jacuzzi bath to the private study, shower, two heads and two comfortable couches, this is a very striking and private Owner's area.

Guests

Guest staterooms consist of two king bedded and two queen bedded cabins on the lower deck aft. The queen bedded cabins also have a single bed in each that can be used for children or for a short nap during the day along with a fold down Pullman berth. All guest cabins have en suite bathrooms featuring onyx and marble baths complimented by gem toned fabrics.

Crew

There are 8 crew cabins (7 on the lower deck forward and the Captain's cabin is located on the upper deck) for a total of up to 14 / 15 persons.

Entertainment System

The extensive entertainment system runs through the yacht and is controlled by RTI remotes, Crestron remotes, and iPads via a Crestron router and an Autopatch router located in the main equipment center (MEC). The system uses Niles speakers that run through the yacht including all outside deck areas. Each of the 15 guest locations has its own RF RTI or a Crestron (exterior) remote. If requires, the guest areas can also be controlled by the interior crew via 2 iPads specifically programmed for this purpose. The guest cabins, saloons and outside aft decks have Samsung flat screen TVs. Crew cabins are equipped with TVs controlled by IR RTI remotes. There are 20+ audio/video sources on this vessel, most of which resides in the MEC. These sources provide satellite programming, audio and video on demand, DVD playback, AM/FM reception, Apple TV and various other viewing choices.

Galley Equipment

Cooking Equipment: MKN cooking unit

Rational self-cooking center

Duke oven

Panasonic NE1757 microwave oven

Refrigeration/Freezer: (1) Electrolux freezer (ESP71FF6)

(1) Electrolux refrigerator (ESP71GR)

Dishwasher: (1) Electrolux (EVCIM60)

Sink Grinder: IMC 523

Ice Maker: (1) Hoshizaki IM-51BAE-B

Crew Galley/Mess Equipment

Cooking Equipment: (2) Panasonic NE21523 microwave ovens

Other: (2) Nespresso coffee makers; (2) Hoshizaki ice makers

Laundry Equipment

Main Laundry Equipment: (4) Miele PW6065 washing machines; (4) Miele PT7136 tumble dryers

Deck Equipment

Anchor Windlass System: Muir Engineering VRC1500

Aft Warping Capstans: Muir Engineering VRC1500

Anchors: (2) Custom stainless steel

Anchor Chain: 24mm stud link Quinddao

Boat Crane and Davits: (2) Nautical Structures

Passerelle: Yacht Tech UK

Side Boarding Ladder: (2) Nautical Structures

Disclaimer

Any yachts offered are subject to still being available. Their particulars are believed correct, but their contents are not guaranteed, neither may they be used for contractual purposes. All speeds, measurements, capacities, consumptions, etc., may be approximate or estimated. Specifications provided for information only. Data was obtained from sources believed to be reliable and is not guaranteed by Owner or Brokers. Buyer assumes the responsibility to ascertain the correctness of all data contained herein and otherwise provided and must instruct his agent and surveyors to confirm all details for accuracy prior to purchase. Subject to prior sale, price and inventory change, or withdrawal from market without notice.



Yachtzoo - Monaco (Principal)
Fort Lauderdale Florida
33016 United States

Paul Madden
M: +1 (561) 568-3430
paul@yacht-zoo.com
www.yacht-zoo.com

4 ROSES



Yachtzoo - Monaco (Principal)
Fort Lauderdale Florida
33016 United States

Paul Madden
M: +1 (561) 568-3430
paul@yacht-zoo.com
www.yacht-zoo.com

4 ROSES



Yachtzoo - Monaco (Principal)
Fort Lauderdale Florida
33016 United States

Paul Madden
M: +1 (561) 568-3430
paul@yacht-zoo.com
www.yacht-zoo.com

4 ROSES



Yachtzoo - Monaco (Principal)
Fort Lauderdale Florida
33016 United States

Paul Madden
M: +1 (561) 568-3430
paul@yacht-zoo.com
www.yacht-zoo.com

4 ROSES



Yachtzoo - Monaco (Principal)
Fort Lauderdale Florida
33016 United States

Paul Madden
M: +1 (561) 568-3430
paul@yacht-zoo.com
www.yacht-zoo.com

4 ROSES



Yachtzoo - Monaco (Principal)
Fort Lauderdale Florida
33016 United States

Paul Madden
M: +1 (561) 568-3430
paul@yacht-zoo.com
www.yacht-zoo.com

4 ROSES



Yachtzoo - Monaco (Principal)
Fort Lauderdale Florida
33016 United States

Paul Madden
M: +1 (561) 568-3430
paul@yacht-zoo.com
www.yacht-zoo.com

4 ROSES



Yachtzoo - Monaco (Principal)
Fort Lauderdale Florida
33016 United States

Paul Madden
M: +1 (561) 568-3430
paul@yacht-zoo.com
www.yacht-zoo.com

4 ROSES



Yachtzoo - Monaco (Principal)
Fort Lauderdale Florida
33016 United States

Paul Madden
M: +1 (561) 568-3430
paul@yacht-zoo.com
www.yacht-zoo.com

4 ROSES



Yachtzoo - Monaco (Principal)
Fort Lauderdale Florida
33016 United States

Paul Madden
M: +1 (561) 568-3430
paul@yacht-zoo.com
www.yacht-zoo.com

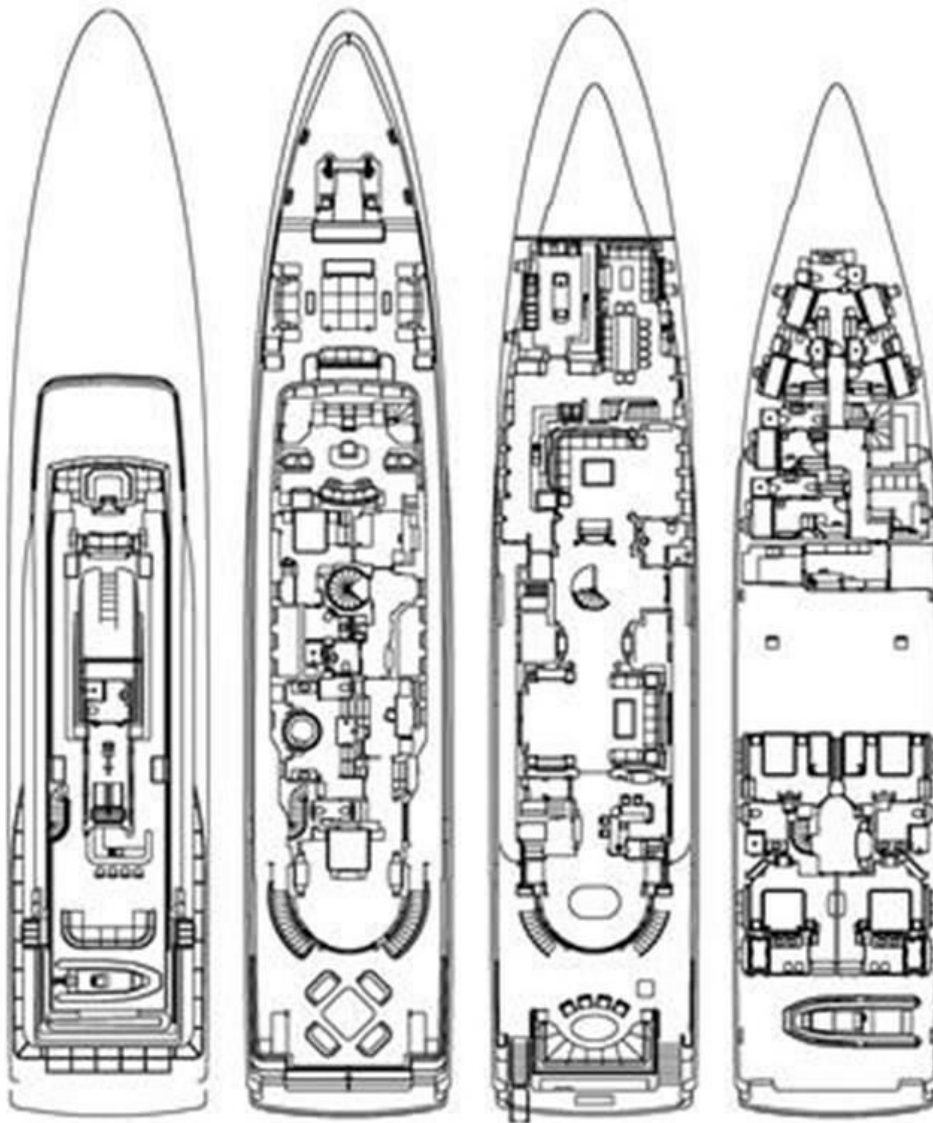
4 ROSES



Yachtzoo - Monaco (Principal)
Fort Lauderdale Florida
33016 United States

Paul Madden
M: +1 (561) 568-3430
paul@yacht-zoo.com
www.yacht-zoo.com

4 ROSES



SIRONA III, 185' (56.40m) Oceanfast Motoryacht, 2004