

AMARAL



2007 ABEKING & RASMUSSEN

LOA:	190' (57.9m)	Delivery/Model	2007
Beam:	35' 2" (10.7m)	Year:	
Max Draft:	11' 6" (3.5m)	Builder:	ABEKING & RASMUSSEN
Tonnage:	1,099.00	Type:	Motor Yacht Displacement
Speed:	12 Knots 16 Knots	Staterooms:	7
Flag:	Cayman	Fuel Cap:	168000 L (44380.9 Gal)
Location:	Fort Lauderdale, Florida United States	Water Cap:	36438 L (9625.9 Gal)
VAT Paid:	VAT Unpaid	Engines:	2x, Caterpillar,
Price:	Price on Application		

NOT AVAILABLE FOR SALE TO U.S RESIDENTS WHILE

IN U.S. WATERS.

Yachtzoo - Monaco (Principal)
Fort Lauderdale Florida
33016 United States

Paul Madden
M: +1 (561) 568-3430
paul@yacht-zoo.com
www.yacht-zoo.com

AMARAL

Additional Specifications For AMARAL:

LOA:	190' (57.9m)	Delivery/Model	2007
Beam:	35' 2" (10.7m)	Year:	
Max Draft:	11' 6" (3.5m)	Year Built:	2007
Hull Material:	Steel	Refit Year:	2023
Superstructure:	Aluminum	Builder:	ABEKING & RASMUSSEN
Hull Config:	Displacement w/ Bulbous Bow	Type:	Motor Yacht Displacement
Deck Material:	Teak	Engines:	Twin, Caterpillar,
Tonnage:	1,099.00	Staterooms:	7
Range At Cruise	7000	Sleeps:	12
Speed:		Crew Berths:	16
Range At Max		Captain Cabin:	Yes
Speed:		Classifications:	+100A1 SSC Yacht Mono G6 LLOYDS REGISTER ✕ 100A1 SSC YACHT MONO G6, LMC, MCA LY2 COMPLIANT
Speed:	Cruising 12 Knots Max 16 Knots	MCA:	Yes
Int Designer:	Donald Starkey	ISM:	Yes
Ext Designer:	Donald Starkey		
Fuel Capacity:	168000 L (44380.9 Gal)		
Water Capacity:	36438 L (9625.9 Gal)		
Holding Tank:	15840 L (4184.48 Gal)		
Flag:	Cayman		
Location:	Fort Lauderdale, Florida United States		
Price:	Price on Application		
Tax Status:	VAT Unpaid		

Interior and exterior guest areas

AMARAL's main salon features wenge and beech joinery of exceptional standard and condition. As part of an extensive interior refit by Elenor Rodriguez in 2022, the fixed and bespoke furniture was replaced, together with carpets, wall coverings, head linings and lighting. The light, neutral palette used brings a calm and sophisticated atmosphere to AMARAL's interior.

The lounge is aft with the dining table midships and a bespoke dining table for 14. On the bridge deck is a further lounge which has been refitted in the same palette as the main salon, again with all furniture, carpets, coverings, lighting, and headlining replaced in 2022.

The bridge deck aft exterior, like all other spaces is in excellent condition, with freshly grey caulked decks and new bespoke varnished teak chairs around an exterior dining table that seats 14. Aft of the dining table is a large U-shaped informal seating area.

Moving up to the Sun deck we find yet another a beautiful varnished teak dining table with seating for 10 and informal seating aft of it, this area may be covered over by the recently replaced sun shades.

Heading forward, the mast provides a large flexible covered area that could be used for gym equipment or entertaining.

Forward of the mast to starboard, more seating is provided in a U-shaped plan which also has tables that can be joined together. A bar is located opposite, and between the two a large, round skylight that lets daylight right down to the bottom of the central stairwell.

This area is finished off by a superbly installed hexagonal spa pool, surrounded by side mattresses and well protected by an elegant high windscreen. Other features on the sundeck include a grill, day head and an emergency generator discretely built into the side mast trunking space.

Throughout AMARAL's interior mahogany, platanus, Japanese ash and macassar comprise her exquisitely crafted joinery package. Maintained in as new condition, the dark tones of the latter set strong accents against the lighter Japanese Ash in places such as the central stairwell, main salon, and dining areas, whereas the warm, intimate and more detailed Platanus and Mahogany are more prevalent in the guest and bridge decks.

The Owner's suite is located forward on the main deck and is accessed by a starboard side corridor which again showcases a remarkable standard of joinery as it curves to port to present the elegantly updated owner's office, with large desk, new chairs, carpets, and bespoke wall coverings in shades of white and blue.

Double doors from the Owner's office lead into the full beam Owner's bedroom, with the bed to port, facing forward and seating below the large port-side window. To starboard are two large, sky blue chairs with a matching footrest. Below the starboard window are built in drawers and storage. Yet again, the new carpets,

coverings, headliners and loose furniture give a fresh, light feel to the owner's suite. The en-suite is forward of the main cabin, with the entrance featuring a bespoke glass seascape and corresponding his & her dressing areas further forward.

Opposite the Owner's office is a gym with Lulu Lemon yoga and Pilates equipment, Peloton + Bike, Keiser cable machine, Escape Your Limits bench, dumb bells and kettle bells as well as individual free weights

The VIP cabin is located on the bridge deck with 1 x double bed, seating area, vanity desk and wardrobes, with a large twin sink and shower, separate toilet and bidet.

Four further double guest cabins are located on the lower deck; 2 x Double cabins with en-suite shower room, separate toilet and bidet, 1 x Double cabin with en-suite shower and separate toilet and 1 x Twin cabin with en-suite shower room and toilet. All guest cabins are freshly refitted featuring light, neutral carpets, wall coverings, bed linen and light marble inserts where fixed cabinetry has been modified to remove previous AV equipment.

DIMENSIONS

General

Length Overall (LOA):	190.00 feet	(57.90 meters)
Beam:	35.11 feet	(10.70 meters)
Draft:	11.48 feet	(3.50 meters)
Tonnage:	1,099 gross	

Capacities

Fuel Capacity:	44,386 US Gallons	(168,000 liters)
Water Capacity:	9,640 US Gallons	(36,438 liters)
Watermakers:	7,926 US Gallon	(30,000 liters)
Lube Oil (storage tank):	1,190 US Gallons	(4,500 liters)
Waste Oil:	943 US Gallons	(3,565 liters)
Grey/Black Water:	4,190 US Gallons	(15,840 liters)

MACHINERY

Main Engines

Engine Type: • (2) Caterpillar 3516B diesels @ 1,877 Hp each

Gearboxes for Main Engines: • (2) ZF 1:4.063 ratio

Drive: • (2) 5-Blade fixed pitch propellers

• Piening prop and Stern tube

Generators & Electricity

Output: • 230/400V/3 Phase/50 Hz

- Generators:
 - (2) 200 kW Caterpillar C9.1 generators (new 2023)
 - (1) 84 kW Caterpillar 3056 DI- TA emergency generator
- Shore Power:
 - (2) Magnus Marine SP200 15KVA 215A output each
- Batteries:
 - (1) 24V bank ship system
 - (1) 24V bank for emergency generator
 - (1) 24V bank for each main engine
 - (1) 24V bank for auxiliary generator
 - UPS system for lighting

Air Conditioning

Type:

Other Machinery

- Watermakers:
 - (2) HEM 6 GPM — 15,000 liters (3,963 US Gallons) /day, per unit
- Stabilizers
 - Quantum Zero Speed
- Bow Thruster
 - Schottel STT 60 125 kW electric
- Steering System
 - Hydro Control HC
- Rudder Angle Indicator:
 - Anschutz
- Fuel Separator & Filtration:
 - (2) Alfa Laval MIB 503 (new 2022)
- Boilers:
 - (2) 15 kW calorifiers, 500 liters (132 US Gallons) each
- Oil/Water Separator:
 - DVZ Oil Chief 500
- Sewage System:
 - DVZ JVZ-50 Bio Master (new 2022)

- WC's:
- EVAC fresh water
- Fire/Bilge Water Filtration:
- (2) Allweiler NT32 200 fire pumps in engine room
 - (1) Allweiler NT32-200 on tank deck
 - (2) DEPA DL 25 FA-NNN air operated diaphragm pumps 5M3 capacity each in the lazarette
- Water Softener:
- (2) Spot Zero 8 GPM (new 2022)

COMMUNICATION SYSTEMS

- SATcom:
- CT&T H2095
 - Sailor 6120
- SSB:
- (1) Sailor HC 4500 MF/H
- VHF:
- (2) Sailor VHF DSC Model 6222 (Bridge)
 - (2) ICOM IC-M502A VHF (crew mess and tender garage)
 - (6) ICOM IC M88 handheld radios
- Watchkeeping:
- (1) Furuno BNWAS BR 510 Bridge
 - Navigational watch alarm system
- UHF Communication:
- • (25) UHF radios
 - (4) Sailor 39XX intrinsically safe fire fighting radios
- Cellular Phone System:
- (2) Ericsson with (1) K4.5 dome
- Navigation Systems
- Radar:
- (1) Furuno 2127 X Band
 - (1) Furuno 2137 S Band

- (2) Hatteland 23.1" radar displays
- Gyrocompass:
 - (2) Anschutz STD 22
- Magnetic Compass:
 - (1) Cassens & Plath overhead compass
- Auto Pilot:
 - (1) Anschutz Nauti Pilot NP 2015
- Depth Sounder:
 - (1) Furuno Color FCV 1100L
- GPS:
 - (2) MX Marine 420 DGPS
- Wind Instruments:
 - • Brookes & Gatehouse Hydra 2000
- Ship's Computer:
 - (2) Apple Macbook
 - Idea for engineering
 - (1) A4 printer / scanner
- Chart Plotter:
 - (1) Transfer 4000 Nobeltec Timzeo (New 2019)
- Log:
 - (1) Sperry Marine Naviknot III
- Navtex:
 - (1) NCT-333
- AIS:
 - (1) Furuno FA 170

ENTERTAINMENT SYSTEM

General: VSAT Starlink
WiFi throughout

- Owner's stateroom:
- (1) 65" Samsung 8K (2022)
 - (1) iPad and docking station (2022)
 - (1) Centralized Kaleidescape system

- All new speakers throughout (2022)

Guest staterooms:

- (1) 43" Samsung (2022)
- (1) iPad with docking station
- (1) Centralized Kaleidescape system

Main Salon:

- (1) 75" Samsung (2023)
- Surround Sound with Crestron processor
- (1) iPad + auto charging docking
- (1) Centralized Kaleidescape system

Bridge deck aft:

- (1) 43" Sunbrite TV
- New in ceiling speakers
- (1) iPadwith Crestron + auto charging docking
- (1) Centralized Kaleidescape system

Sun deck:

- Lighting with touchscreen control (2022)•
- (1) iPadwith Crestron + auto charging docking
- (3) In-ceiling speakers (2022)
- WiFi, 5G and KA antennas (2022)

Captain's cabin:

- (1) 32" Samsung TV (2022)

- In ceiling speakers (2022)
- (1) iPadwith Crestron + auto charging docking

Crew mess

- (1) TV 57
- (1) iPadwith Crestron + auto charging docking

Galley / Laundry

- Camera screen and stereo in galley

GALLEY & LAUNDRY EQUIPMENT

Main Galley Equipment

- (2) Rational oven (new 2023)
- (1) MKN Induction range top
- (1) MKN Ceramic range top
- (1) Panasonic Microwave
- (1) MKN Flat top
- (1) MKN twin deep fyer
- (1) Liebherr freezer
- (3) Liebherr refrigerators
- (1) Blendtec blender
- (1) Valko Favola 315/10 vacuum packing unit
- (1) Paco Jet ice cream maker
- (1) Plate warmer

- (1) Vorwerk thermomixer
 - (1) Robot Coupe processor
 - (1) Magimix mixer
- Main deck pantry:
- (1) Liebherr refrigerator
 - (1) Miele dishwasher
 - (1) Manitowoc icemaker
 - (1) Cimbali and Boniparte coffee machine
- Bridge deck pantry
- (1) Liebherr fridge (413L) (new 2024)
 - (1) Uline fridge (180L)
 - (1) Manitowoc Ice machines
 - (1) Cimbali M21 Junior coffee machine
 - (2) Jura milk frothers
- Master stateroom and office:
- (1) Domestic small fridge (approx. 90L each)
- VIP and lower guest staterooms:
- (1) Domestic small fridge (approx. 90L each)
- Skylounge:
- (2) Liebherr fridges (180L each) (currently being replaced with (1) wine fridge and (1) regular fridge)
- Sun deck:
- (1) Manitowoc icemaker
 - (1) set of Isotherm refrigerated drawers
- Bridge deck aft:
- (1) Manitowoc icemaker

- (1) Set of refrigerated drawers

Main deck:

- (1) Small refrigerator
- (2) Wine refrigerators

Lazarette:

- (1) Icemaker

TENDERS & TOYS

Tenders:

- (1) 26' (8.09m) Nautica w/250 Hp Yamaha outboard
- (1) 14.7' (4.5m) Zodiac Solas approved rescue tender w/40 Hp Yamaha engine

Dive Gear:

- (4) Sets of diving equipment
- (6) Dive tanks

Watersports:

- (4) Yamaha wave runners
- (5) Seabobs
- (1) Slide
- (5) Paddleboards
- (1) Efoil
- Various wakeboards, water skis, inflatables

Deck Equipment

Anchor Windlass System:

- (2) Steen 23.13 electric

Aft Warping Capstans:

- (2) Steen 59.48 electric

Anchors:

- Replaced 2022

- Anchor Chain:
 - Galvanized 2022

- Ground Tackle:
 - Port: (6) shackles (165m)

 - Stbd: (5) ¾ shackles (160.5m)

- Boat Crane and Davits:
 - Gilbert & Schmalriede GMBH 800 kg/1.764 lbs safe working load, cradle launch and recovery for tender

 - Jet ski davit

 - Aljo hydraulic

- Boarding Ladder:
 - (1) Marquipt removable sea stair portside

 - (1) Yacht Tec hydraulic boarding ladder stbd

 - (1) PTR Holland Thesis Solas Pilot ladder

- Swim Platform:
 - Gilbert & Schmalriede hydraulic stern door (lowers)

- Searchlight:
 - Carlisle & Finch 500W 2-speed

- Awning:
 - Tucci umbrella sundeck forward

 - Awnings bridge deck aft and main deck aft

 - Multiplex sun deck aft awnings and carbon poles (new)

- Jacuzzi Dip Pool:
 - Balboa Spa control

- Thermal Camera:
 - Mast mounted flir (new 2022)

- Ship's Bell:
 - (1) Polished stainless steel of 310mm

SECURITY, FIRE FIGHTING & SAFETY EQUIPMENT

- Safety
 - (2) 20 person Ocean Safety SOLAS Ellipse (new 2024)

- (2) 25 person Ocean Safety SOLAS Ellipse (new 2024)
- (61) Crewsaver 275N inflatable life jackets
- (41) Seepilz solid core Solas life jackets — adult
- (10) Seepilz solid core Solas life jackets – child
- (1) EPIRB ACR RLB-35
- (1) EPIRB ACR RLB-38
- (26) Aquata ARO V20 adult regular survival suits
- (2) Aquata ARO V20 adult large survival suits
- (1) Imperial MQ254 adult small survival suit
- (2) Stearms I 590 child survival suit
- (12) West Marine Coastal inflatable jackets
- (2) Sart ACR Pathfinder
- (1) ACR PLB 425

Fire fighting:

(59) fire extinguishers, broker down as:

- (11) ABC 6KG
- (9) ABC 2KG
- (1) ABC 2.27KG
- (3) ABC 3.5LBS
- (1) ABC 2.27LBS

- (9) CO2 5KG
- (6) CO2 2KG
- (16) FOAM 9LTS
- (1) FOAM 50 LTS
- (2) LICELL 10KG
- (1) K-CLASS
- (4) Fire hydrant points with hoses and nozzles
- (4) complete sets of firefighting gear
- (5) fire blankets

Medical:

- Up to date Medair

Alarms:

- Thrane & Thrane / Sailor 3000M SSA ASI PLC Modicon TYPE 984-A120 alarm monitoring system with 220 channels

Security:

- Consilium Salwico Cargo addressable fire detection
- Panasonic CCTV with type WV- CU360CJ control
- (12) IP cameras
- Milestone software with record & playback server

Accommodations

GENERAL

Owner's stateroom

Owner's stateroom is located forward on the main deck and is accessed by a starboard side corridor which showcases a remarkable standard of joinery that curves to port to present the elegantly updated owner's office, with large desk, new chairs, carpets, and bespoke wall coverings in shades of white and blue. Double doors from the Owner's office lead into the full beam Owner's bedroom, with the bed to port, facing forward and seating below the large portside window. To starboard are two large, sky blue chairs with matching footrest and built in drawers and storage below the starboard

window. All new carpets, coverings, headliners and loose furniture feel fresh, light and relevant. The ensuite is forward of the main cabin, with the entrance featuring a bespoke glass seascape. Corresponding his & her dressing areas further forward.

Opposite the Owner's office is a gym with Lulu Lemon yoga and pilates equipment, Peloton + Bike, Keiser cable machine, Escape Your Limits bench, dumb bells and kettle bells as well as individual free weights. The gym with ensuite is convertible to a single berth cabin.

Guest accommodation

The VIP stateroom is located on the bridge deck with (1) double bed, seating area, vanity desk and wardrobes, with a large twin sink and shower, separate toilet and bidet. Four further double guest cabins are located on the lower deck; (2) Double cabins with ensuite shower room, separate toilet and bidet, 1 x Double cabin with ensuite shower and separate toilet and 1 x Twin cabin with ensuite shower room and toilet. All guest cabins are freshly refitted featuring light, neutral carpets, wall coverings, bed linen and light marble inserts where fixed cabinetry has been modified to remove previous AV equipment

Guest areas

The main salon and dining are found on the main deck and features Wenge and Beech joinery of exceptional standard and condition. A combination of fixed and bespoke furniture is new, together with carpets, wall coverings, head linings and lighting. The palette used is light and neutral, bringing calm and sophisticated atmosphere to AMARAL. The lounge is aft with the dining table midships with a bespoke dining table for 14.

On the bridge deck is a further lounge which again has been refitted in the same light, balanced palette as the main salon, with all furniture, carpets, coverings, lighting and headlining replaced. The bridge deck aft exterior again is in great condition, with freshly grey caulked decks and new bespoke varnished teak chairs around the exterior dining table that seats 14.

The sun deck has a jacuzzi (8 persons) forward with sunpads either side a bar and seating area forward to each side, with further dining and seating aft under a removal canopy.

Guest Accommodation

- (1) VIP cabin with dressing area, ensuite with double sink, shower, toilet & bidet on bridge deck
- (2) Double cabins with ensuite shower room with double sink, toilet and bidet
- (1) Double cabin with ensuite shower room with double sink and toilet
- (1) Double/Twin convertible cabin, ensuite shower room, double sink and toilet

Joinery

Throughout the interior a palette of wood limited to mahogany, platanus, Japanese ash and macassar comprises AMARAL's exquisitely crafted joinery package. Maintained in as new condition, the dark tones of the latter set strong accents against the lighter Japanese Ash in places such as the central stairwell, main salon and dining areas whereas the warm, intimate and detailed tones of Platanus and Mahogany feature more prevalently in the guest and bridge decks.

Crew

- (1) Double Captain's cabin with ensuite shower room
- (7) Twin upper and lower berths with ensuite shower room

REFIT WORK 2021-2023

Interior:

New carpet throughout

New headliners throughout

Yachtzoo - Monaco (Principal)
Fort Lauderdale Florida
33016 United States

Paul Madden
M: +1 (561) 568-3430
paul@yacht-zoo.com
www.yacht-zoo.com

AMARAL

New LED lighting throughout
New fabric wall panels throughout
New marble flooring Main Deck (Salon & Dining)
New AV system throughout
New bedding throughout, including both guest and crew
New stand-alone furniture (Common Areas)
New Amtico flooring (Galley and Crew areas)
New galley counter tops
New cook tops and oven (Purchased)
New Insinkerator
New interior floor finish (bridge deck)
New leather throughout guest areas
New upholstery on all guest bed frames
New gym installed
New window treatments in the master
Lighting scheme (sun deck)
New AV system throughout
New cameras throughout
New side safety tracks
New bridge windows
New anchors
All new exterior cabinet doors and hardware
New jetskis and rack system
New cradle rollers for tender
Removal and overhaul of capstans, passerelle, side boarding ladder davit
Conversion of scuppers from steel to PVC
New finish on all exterior tables

ENGINEERING

New Idea PMS System and inventory system
New DVZ bio reactor sewage treatment system with tank & modifications to suit
Upgrade to refrigeration system control panel rebuilt new compressors and condensers
New air-conditioning sea water pumps X4
New air conditioning chilled water pumps X3

BRIDGE

New SAT system X5 (Starlink X2)
New Hatlyn NAV displays
New FLIR camera
New forward-looking sonar
New VHF radios
New wall finishing / restoration
Everything varnished
B&G upgrade
New AIS GPS

New SATC
New SSAS
New soft goods

DECK

New cushions throughout
New paintwork throughout
Re-seam teak decks (sun deck, bridge deck, aft deck and foredeck)
New awnings throughout
New Jacuzzi
New stone tops throughout
New LED lighting throughout with a new interactive
All air handler units rebuilt or renewed
All extractor fans rebuilt or renewed
All new batteries onboard (April 2022)
New storage units in Engine room
New snap on tools and storage systems
New Spot Zero water filtration
New fresh water pumps
Water makers fully rebuilt
Overhaul Main engine exhaust system
New fuel polishing system- (2) Alpha Laval
New switchboard breakers and switch gear (upgraded analogue to digital)
New load bank system
Power Management upgrade
New monitoring system
OWS new filter and service
New air compressors with new air dryer for compressors
New generator exhaust lagging and scrubber bricks and heating elements
New main engine exhaust lagging
New piping insulation throughout the lower deck
New ventilation trunks in salon

UNDERWATER WORKS

New Zero Speed Quantum XT extendable fin stabilizers + Full new system
New bulbous bow
Bottom blasted to bare steel and new coating system applied
New underwater lights
New rudder bearings
New main shaft bearings

15 YEAR LLOYDS SURVEY

All valves serviced or replaced
Main shafts removed and alignment checked
Props removed and high speed balanced
All noted shell steel repairs completed

Anchor chains measured and re-galvanizing
Tanks blasted and new coating applied (black, grey and fresh water tanks)
All tanks cleaned
Full incline survey completed
Sea chest overhaul
Rebuild bad steel in tanks, as required

Disclaimer

Any yachts offered are subject to still being available. Their particulars are believed correct, but their contents are not guaranteed, neither may they be used for contractual purposes. All speeds, measurements, capacities, consumptions, etc., may be approximate or estimated. Specifications provided for information only. Data was obtained from sources believed to be reliable and is not guaranteed by Owner or Brokers. Buyer assumes the responsibility to ascertain the correctness of all data contained herein and otherwise provided and must instruct his agent and surveyors to confirm all details for accuracy prior to purchase. Subject to prior sale, price and inventory change, or withdrawal from market without notice.

Main Salon



Main Salon



Main Salon



Main Salon



Main Salon



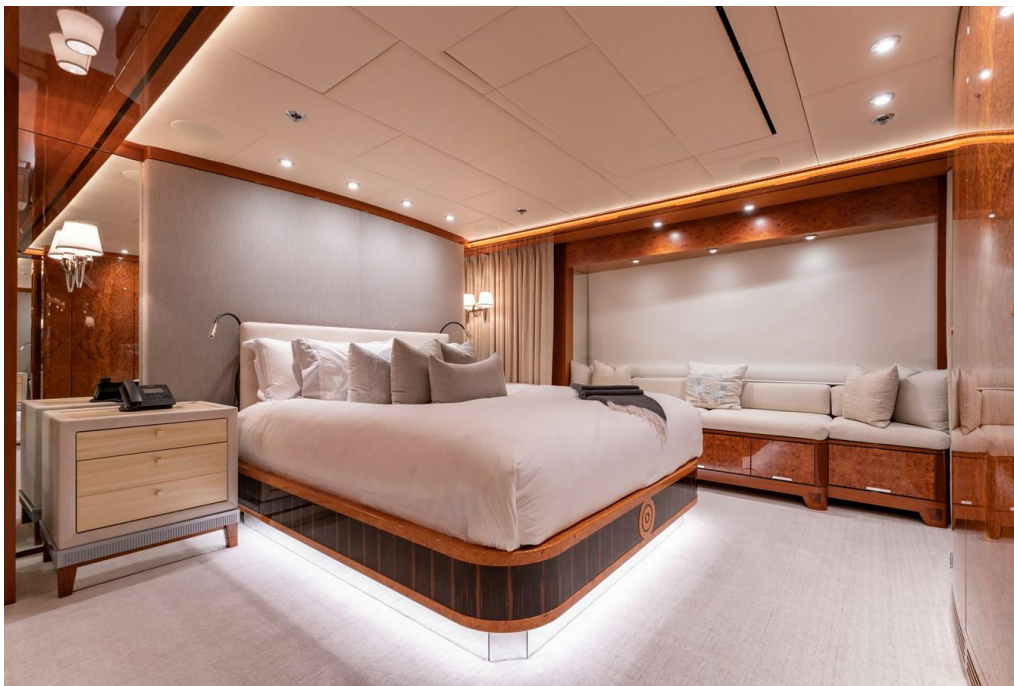
Main Deck Dining



Main Deck Master Stateroom



Main Deck Master Stateroom



Main Deck Master Stateroom



Owner's Foyer



Yachtzoo - Monaco (Principal)
Fort Lauderdale Florida
33016 United States

Paul Madden
M: +1 (561) 568-3430
paul@yacht-zoo.com
www.yacht-zoo.com

AMARAL

Onwer's Office



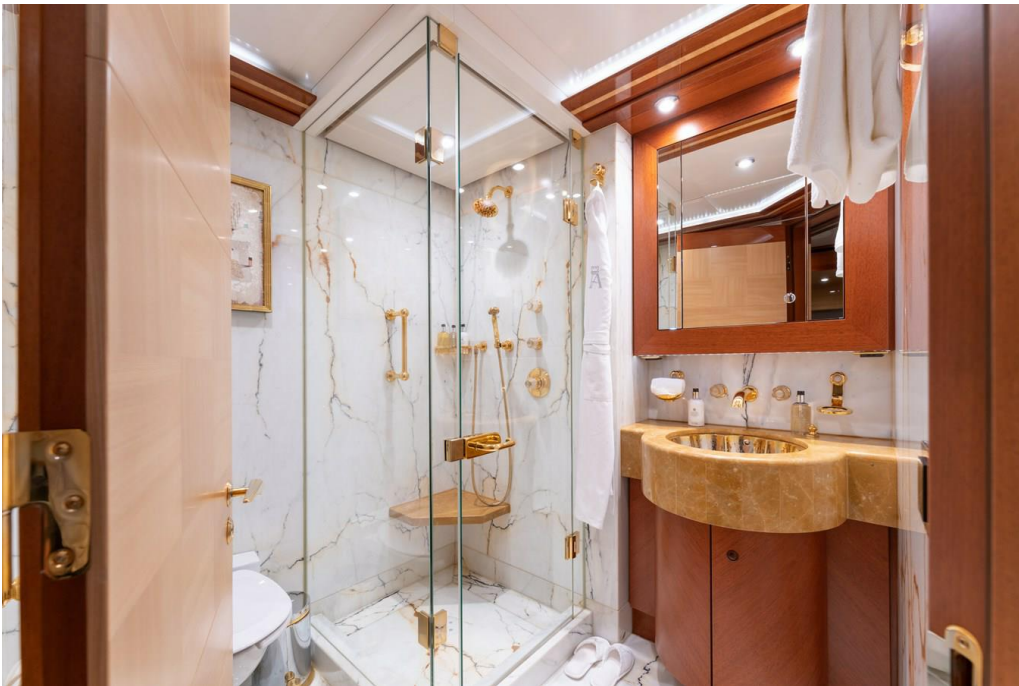
Main Deck Gym - Convertible to Single Berth 7th Stateroom



Main Deck Gym - Convertible to Single Berth 7th Stateroom



Main Deck Gym Ensuite



Lower Deck Guest Stateroom



Lower Deck Guest Stateroom Ensuite



Lower Deck Guest Stateroom



Lower Deck Guest Stateroom Ensuite



Lower Deck Guest Stateroom



Lower Deck Guest Stateroom Ensuite



Lower Deck Guest Stateroom



Lower Deck Guest Stateroom Ensuite



Bridge Deck Skylounge



Bridge Deck Skylounge



Bridge Deck Aft Dining



Bridge Deck Aft Lounge



Sun Deck



Sun Deck



Sun Deck



Sun Deck

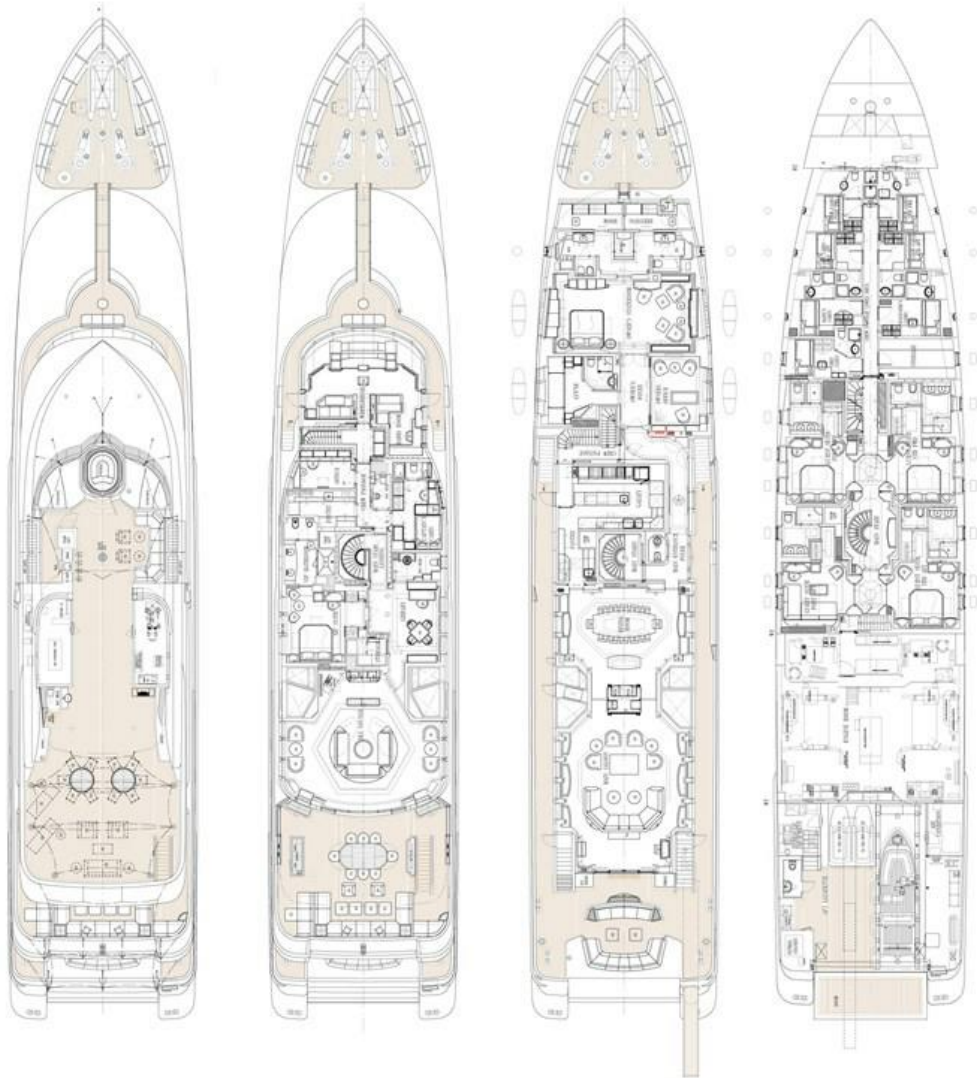


Main Deck Aft



Main Deck Aft





AMARAL, 190' (57.90m) Abeking & Rasmussen Motoryacht, 2007/2023