

W



2013 FEADSHIP

LOA:	189' (57.6m)	Delivery/Model	2013
Beam:	34' 8" (10.55m)	Year:	
Max Draft:	10' 8" (3.25m)	Builder:	FEADSHIP
Tonnage:	941.00	Type:	Motor Yacht Motor Yacht
Speed:	13.5 Knots 15.6 Knots	Staterooms:	6
Flag:	UNITED STATES	Fuel Cap:	104000 L (27473.89 Gal)
Location:	Fort Lauderdale, Florida United States	Water Cap:	25000 L (6604.3 Gal)
VAT Paid:	US Duty Paid	Engines:	2x, MTU, 12V 4000 M53R, 1529 HP
Price:	(\$47,295,378 USD est.) €44,950,000 EUR		

Additional Specifications For W:

LOA:	189' (57.6m)	Delivery/Model	2013
Beam:	34' 8" (10.55m)	Year:	
Max Draft:	10' 8" (3.25m)	Year Built:	2013
Hull Material:	Steel	Refit Year:	2020
Superstructure:	Aluminum	Builder:	FEADSHIP
Hull Config:	Monohull	Type:	Motor Yacht Motor Yacht
Hull Designer:	De Voogt Naval Architects	Engines:	1529 HP, Twin, Diesel, MTU, 12V 4000 M53R, 5990hrs / 5950hrs
Deck Material:	Teak	Staterooms:	6
Tonnage:	941.00	Sleeps:	12
Range At Cruise		Crew Quarters:	7
Speed:		Crew Berths:	7
Range At Max	4500	Captain Cabin:	No
Speed:		Classifications:	
Speed:	Cruising 13.5 Knots Max 15.6 Knots	MCA: ISM:	
Int Designer:	Bannenberg & Rowell Design		
Ext Designer:	De Voogt Naval Architects		
Fuel Capacity:	104000 L (27473.89 Gal)		
Water Capacity:	25000 L (6604.3 Gal)		
Holding Tank:	6550 L (1730.33 Gal)		
Flag:	UNITED STATES		
Location:	Fort Lauderdale, Florida United States		
Price:	(\$47,295,378 USD est.) €44,950,000 EUR		
Tax Status:	US Duty Paid		

DETAILED DESCRIPTION

1. MAIN CHARACTERISTICS

TYPE	Full Displacement Motor Yacht
BUILDER	Feadship
HULL NO.	685
IMO NUMBER	1011903
MMSI NUMBER	368152290
NAVAL ARCHITECT	De Voogt Naval Architects
EXTERIOR DESIGN	De Voogt Naval Architects
INTERIOR DESIGN	Bannenberg & Rowell, A La Mer Inc
YEAR	2013
REFIT	2020
CLASSIFICATION	Lloyd's Register, ABS (100 A1, SSC, Yacht, Mono, G6, LMC, UMS)
CONSTRUCTION	Steel Hull Aluminium Superstructure Teak Decks
CREW	Up to 13
FLAG	United States of America
ENGINES	2 x 1,140 kW (1,529 Hp) MTU 12V 4000 M53R
GT	941
NT	287
DISPLACEMENT	Approx. 918 tons fully loaded

2. DIMENSIONS

LOA	57.60m / 189' 0"
LWL	50.70m / 166' 4"
BEAM	10.55m / 34' 7"
DRAFT	3.25m / 10' 8" max

3. SPEED & RANGE UNDER POWER

MAXIMUM SPEED	15.60 knots
CRUISING SPEED	13.50 knots
ECONOMICAL SPEED	11.00 knots
RANGE	4,500nm at 11.00 knots

4. CAPACITIES

ACCOMMODATION	12 guests in 6 cabin(s)
CREW	13 crew in 7 cabin(s)
FUEL	104,000 litres / 27,474 US gallons

FRESH WATER	25,000 litres / 6,604 US gallons
HOLDING TANK	6,550 litres / 1,730 US gallons
LUBE OIL	5,000 litres / 1,321 US gallons
DIRTY OIL	5,000 litres / 1,321 US gallons
GREY WATER	2,800 litres / 740 US gallons
BLACK WATER	17,000 litres / 4,491 US gallons

5. **ACCOMMODATION**

Accommodation for up to 12 guests in 6 cabins and up to 13 crew

GUEST CABINS

- 1 x Master cabin
- 1 x VIP cabin
- 1 x Double cabin
- 2 x Twin cabins
- 1 x Convertible cabin

CREW CABINS

- 1 x Captain cabin
- 6 x Crew cabins

OVERVIEW

Master Suite located on the Main Deck complete with private balcony. Lower deck offers two large VIP Cabins with King beds aft, followed by two twin convertible cabins forward. An additional sleeping option is available in the Bridge Deck Salon - a queen Murphy bed is located on the port side, and the area boasts full en-suite facilities including a shower.

6. **MECHANICAL EQUIPMENT**

ENGINES	2 x 1,140 kW (1,529 Hp) MTU 12V 4000 M53R Diesel
ENGINES HOURS	Starboard: 5,990 hours as of 01st Apr 2024 Port: 5,950 hours as of 01st Apr 2024
GENERATORS	1 x 92 kW (123 Hp) C9DI Diesel 1 x 215 kW (288 Hp) C9DI Diesel
GENERATORS HOURS	Starboard: 15,520 hours as of 01st Apr 2024 Port: 15,637 hours as of 01st Apr 2024
EMERGENCY GENERATOR	1 x Caterpillar C4.4 DITA
STABILISERS	Quantum Marine with adaptive stabiliser control At rest and underway
AIR CONDITIONING	Heinen & Hopman

BOWTHRUSTER	99 kW HRP
GEAR BOX	Reintjes reverse and reduction gearboxes
PROPULSION	MTU 12V 4000 M53R
PROPELLERS	2 x Fixed pitch, 1.65m
RUDDER ANGLE	Max 35 degrees
STEERING SYSTEM	Van der Velden electric / hydraulic
ELECTRICITY	310 kVA 237kW 447.4 Amps
SHORE POWER	230 / 400V 50Hz
BATTERIES	24V DC Main engine start batteries 24V DC Service batteries 24VDC Generator start batteries 24V DC Battery bank UPS for critical bridge and AV equipment
CHARGERS	Mastervolt Chargers
CONVERTERS	2 x ASEA 105kVA each
EMERGENCY	Eaton UPS System
HYDRAULICS	Akerboom
WATER MAKER	HEM Duplex H30 / 3400 - 1,200 litres / hour total
WATER SYSTEM	HEM Fresh water sterilisation UV and silver / copper dosing
TOILET SYSTEM	Jets 30MB-D
SEWAGE SYSTEM	Hamann HL-Cont Plus 05
FUEL CENTRIFUGE	Westfalia
FUEL SEPARATOR	GEA Westfalia

7. **NAVIGATION EQUIPMENT**

MAGNETIC COMPASS	Cassens & Plath Type/21
GYRO COMPASS	Alphatron AlphaMiniCourse
AUTOMATIC PILOT	Navis AP3000
ECHO SOUNDER	Furuno FE700
RADAR	JRC X-Band JMA 5312-6BB JRC X-Band JMA 5332-12BB
AIS	SAAB R4
DGPS	SAAB R4
CHART PLOTTER	5 x MFD Transas NS 4000 Stations
NAVTEX	Furuno NX700A
WEATHER FAX	Furuno
LOG	Sperry
WIND INSTRUMENTS	Alphatron
SEARCHLIGHTS	ARC Searchlight
CAMERAS	5 x Axis cameras, 2 monitors and 2 computer screens Sea.AI bow camera

8. COMMUNICATION EQUIPMENT

VSAT	Sea Tel 6009
FLEET BROADBAND	Thrane & Thrane FB250
SATCOM	C Sailor TT3000EB
INTERNET	2 x Starlink HD Dish
VHF	JRC 770S
SSB	Thrane & Thrane 6310 150W
TELEPHONE EXCHANGE	Cisco phone system
INTERCOM	Bridge to tender garage, engine room, emergency steering room

9. DECK EQUIPMENT

ANCHOR WINDLASSES	2 x Muir polished S/S, vertical
AFT WARPING CAPSTANS	2 x Muir polished S/S, vertical
ANCHORS	2 x Pool steel balanced
ANCHOR CHAINS	2 x U3-grade galvanised stud link chain, 7 shackles per side
BOAT CRANE & DAVITS	2 x Van Driel overhead beam cranes in enclosed tender bay
PASSERELLE	Akerboom 200kg
SIDE BOARDING LADDER	Marquipt, 9 step, self-levelling
POOL / JACUZZI	Jacuzzi on sundeck forward
SWIMMING PLATFORM	Yes
AWNINGS	Redesign of sun-shades and furniture placement on sundeck
COVERS	All exterior furniture

10. ENTERTAINMENT EQUIPMENT

OVERVIEW	<p>The entire AV/IT system was newly installed in 2020 with a full upgrade to the latest technology of that year</p> <p>4 new AV racks in the AV room and the installation of 2 x new Seatel 120TVHD domes</p> <p>Entire WiFi network and Av system upgraded to cover the entire boat</p>
SKYLounge / DINING AREA	<p>2 x Sony 65" TVs</p> <p>iPad mini remote control. Audio and video included</p> <p>Kaleidescape, Apple TV, Live Satellite TV, central Blu Ray, central Apple TV</p> <p>XM/Sirius internet radio</p>
BRIDGE DECK AFT	<p>Peerless AV 49" TV on a swivel bracket</p> <p>iPad mini remote control</p> <p>Kaleidescape, Apple TV, Live Satellite TV, central Blu Ray, central Apple TV</p> <p>XM/Sirius internet radio</p>
SUN DECK	<p>2 x Peerless AV 49" TVs on swivel brackets</p> <p>iPad mini remote control</p> <p>Kaleidescape, Apple TV, Live Satellite TV, central Blu Ray, central Apple TV</p> <p>XM/Sirius internet radio</p>

OWNER'S SUITE	Sony 49" TV on a swivel bracket iPad mini remote control Kaleidescape, Apple TV, Live Satellite TV, central Blu Ray, central Apple TV XM/Sirius internet radio Owners bathroom, balcony and dressing room all have audio
MAIN SALON	Sony 77" TV iPad mini remote control Kaleidescape, Apple TV, Live Satellite TV, central Blu Ray, central Apple TV XM/Sirius internet radio Main lounge has an audio zone
GUEST CABINS	Sony 32" TV iPad mini remote control Kaleidescape, Apple TV, Live Satellite TV, central Blu Ray, central Apple TV XM/Sirius internet radio
CREW AREA	Sony 49" TV iPad mini remote control Kaleidescape, Apple TV, Live Satellite TV, central Blu Ray, central Apple TV XM/Sirius internet radio
GALLEY	iPad mini for over dining table pin hole camera
CAPTAIN'S CABIN	Samsung 28" TV iPad mini remote control Kaleidescape, Apple TV, Live Satellite TV, central Blu Ray, central Apple TV
WHEELHOUSE	Bluetooth audio
ENGINEERS CABIN	Sony 32" TV iPad mini remote control Kaleidescape, Apple TV, Live Satellite TV, central Blu Ray, central Apple TV
CREW MESS	Sony 49" TV iPad mini remote control Kaleidescape, Apple TV, Live Satellite TV, central Blu Ray, central Apple TV XM/Sirius internet radio
BRIDGE DECK PANTRY	iPad mini for over dining table pin hole camera

11. **GALLEY & LAUNDRY EQUIPMENT**

GALLEY	MKN Electric range with 6 heating zones MKN Deep fat fryer Gaggenau oven MKN combi steamer MKN griddle Smitsair hood Panasonic NE1027 microwave oven Foster 360ltr fridge Electrolux 400ltr freezer
---------------	---

CREW MESS	Miele dishwasher
	ISE Macerator
	Miele dishwasher
	Foster 260ltr fridge
	2 x Toaster ovens
LAUNDRY	Coffee machine
	3 x Miele PW6065 commercial washing machines - 6.5kg Capacity
	3 x Miele PT7136 PLUS commercial dryers with lint filter - 6.5kg Capacity
	1 x Miele B990 floor standing roller iron

12. SAFETY & SECURITY EQUIPMENT

SAFETY / SECURITY	Alarm monitoring and control system
	Surveillance systems
FIRE FIGHTING	FLIR gyrostabilised camera on foremast
	Fog watermist fixed fire fighting system
	Portable fire extinguishers
	Fire hoses and nozzles
	Fireman's outfit and breathing apparatus

13. TENDERS & WATERSPORTS EQUIPMENT

TENDERS	1 x 7m Pascoe SOLAS Rescue tender
	1 x 7m Pascoe DT Launch guest tender
WATERSPORTS	1 x Giant waterslide
	1 x Inflatable swim platform system
	Snorkel gear
DIVING	Lenhardt & Wagner Brownie's Dive Compressor

14. REFIT & MAINTENANCE NOTES

10 YEAR LLOYDS SURVEY:

- In 2023 the boat underwent its 10 year survey. All items per Lloyd’s protocol were inspected and signed off on. At present W has no deficiencies pending.

2020 REFIT OVERVIEW:

Superyacht W underwent a 11-month refit in 2020 at Feadship, the Netherlands The foremost renewal activities included placing a larger Jacuzzi on the sun deck and implementing major modifications to the interior layout. An inspired improvement to the main deck lounge has fashioned a far more open and uniformed space, while the number of staterooms available has been increased from four to six. The former VIP stateroom on the lower deck has been converted back to the original design of two equal-sized and equally luxurious guest suites to port and starboard. A double Murphy bed has been installed in the bridge

deck lounge, and the adjacent powder room refitted into a dedicated marble-clad bathroom for those times when the lounge is used as a suite for guests, who will enjoy the best of views as well as lots of space.

The fine interior style developed by Bannenberg & Rowell Design in 2013 has been retained, complemented by various personal touches made by the owner together with Fort Lauderdale-based A La Mer, Inc. On the technical front, the starting point was to ensure that all major systems on W were dialed back to 'zero time'. The wheelhouse on W has been given a comprehensive upgrade with all-new screens. All onboard lighting has been switched from halogen to LEDs, which necessitated the removal of all ceilings and relaying of all cabling. The AV and IT systems have been totally renewed, and a new sewage treatment unit fitted. Both MTU main engines have been completely overhauled, and all other systems reviewed and modernised where required. Many other smaller maintenance jobs were also carried out, from sprucing up areas of the bridge coloured by the sun to adding new glass inserts to all the interior cupboards.

This impressive refit involved close cooperation with the owner's team and between two different Feadship yards. The project was initially started in Aalsmeer, with the dry-docking phase taking place in Makkum. This enabled all the extra work requests from the owner's team to be fully met without having any impact on other ongoing timetables

REFIT LIST:

- Additional cabin created - splitting the previous full beam lower guest cabin
- Additional sleeping option created - Murphy bed and full en-suite services retrofitted in bridge deck salon
- Bridge electronics and navigation systems
- Silver metal paint scheme and style upgrades
- Sewage treatment to latest standards
- Larger hot tub change from four suites to six
- New exhaust risers
- Day head converted into full bathroom
- Complete over haul of AV/IT systems
- Full LED lighting throughout
- Addition of third generator by using emergency generator
- Alarm Monitoring & Control System
- Akerboom Shaft seals upgrade
- Exterior paint, teak, and ceilings
- Main lounge redesign
- New boilers for hot water supply
- Provisions for many more water toys
- Bow tender area gasoline storage approved by Lloyd's Register and flag state
- Redesign of sun-shades and furniture placement on sundeck
- Larger and expandable outdoor dining table on sun deck
- FLIR gyro-stabilised camera on foremast
- Video surveillance systems upgrade
- Flag change to USA, with strict adherence to United States Coast Guard requirements and regulations
- Quantum XT stabilizers upgrade
- All pumps and electrical ends where serviced
- All AC ducts where cleaned

- Galley ventilation was inspected and cleaned

15. **COMMENTS**

The 189-foot (57.6m) yacht W offers on-water living at its finest. From her Feadship quality to her copious deck spaces and inviting interior, guests will be dazzled by everything this superyacht has to offer. After undergoing an extensive 10-month refit at Feadship in 2020, W is in "as new" condition, boasting impressive new amenities and a striking grey hull.

W's awe-inspiring interior, designed by Bannenberg & Rowell with touches by A La Mer during her refit, boasts chic modern elegance and a relaxing ambiance. Guests will be captivated by the superyacht's stunning use of wood and stylish furniture. Both the main salon and bridge deck offer guests excellent areas for socialising and relaxation. The bridge deck has an impressive flexible dining space that blurs the lines between inside and out, with fully retractable doors for indoor/outdoor dining.

Superyacht W welcomes up to 10 guests in the comfort of five sumptuous staterooms. The main deck master stateroom is a haven complete with its own private balcony, perfect for morning coffee or reading. The expansive suite also features a lounge, a large walk-in closet with a dressing room, a plush king-size bed, and a lavish en-suite bath. Below deck, the superyacht features two VIP staterooms with king beds and two convertible twin staterooms. An additional stateroom on the bridge deck can accommodate two guests on a queen murphy bed.

Featuring vast outdoor living areas, guests will enjoy living the alfresco lifestyle while aboard W. The superyacht's 68-foot (21m) long sundeck is the hub of the yacht, ideal for soaking in the sunshine and relaxation. It features several sunbathing spaces, a large Jacuzzi, a shaded bar, and alfresco dining. Both the bridge deck aft and main deck aft showcase lounging areas ideal for socialising. Yacht W is also equipped with a large array of water toys for guests to enjoy all day long.

Please note that the Boston Whaler tender, and other water sport toys, depicted in the images is not included in the offering. It is shown for illustrative purposes only.

KEY FEATURES

- Extensive refit completed in 2020 at Feadship, Holland
- Offering the very latest in Feadship engineering and AV/IT technology
- Modern chic interior
- Huge master suite complete with private balcony, lounge, and extensive dressing area
- Oversized sundeck with large hot tub

Disclaimer

Any yachts offered are subject to still being available. Their particulars are believed correct, but their contents are not guaranteed, neither may they be used for contractual purposes. All speeds, measurements, capacities, consumptions, etc., may be approximate or estimated. Specifications provided for information only. Data was obtained from sources believed to be reliable and is not guaranteed by Owner or Brokers. Buyer assumes the responsibility to ascertain the correctness of all data contained herein and otherwise provided and must instruct his agent and surveyors to confirm all details for accuracy prior to purchase. Subject to prior sale, price and inventory change, or withdrawal from market without notice.

W-8



W-9



Yachtzoo - Monaco (Principal)
Fort Lauderdale Florida
33016 United States

Paul Madden
M: +1 (561) 568-3430
paul@yacht-zoo.com
www.yacht-zoo.com

W

W-10



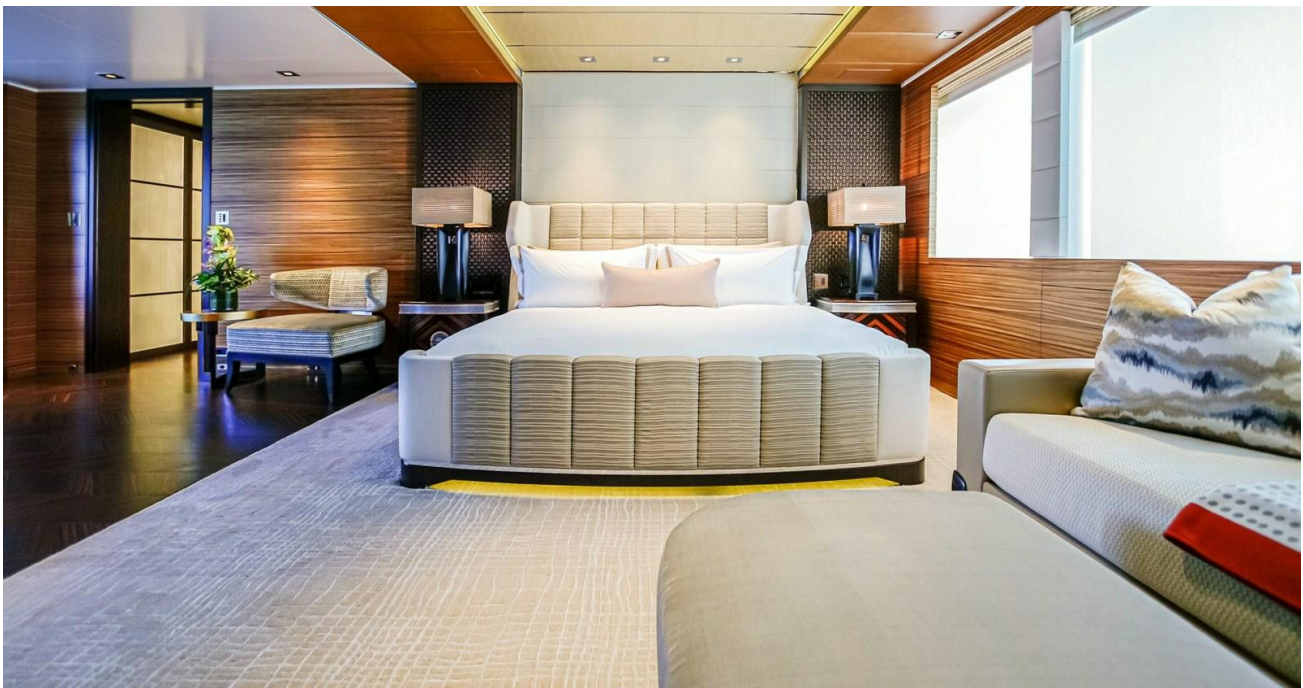
W-11 (1)



W-12



W-13



W-14



W-15



W-16



W-17



W-18



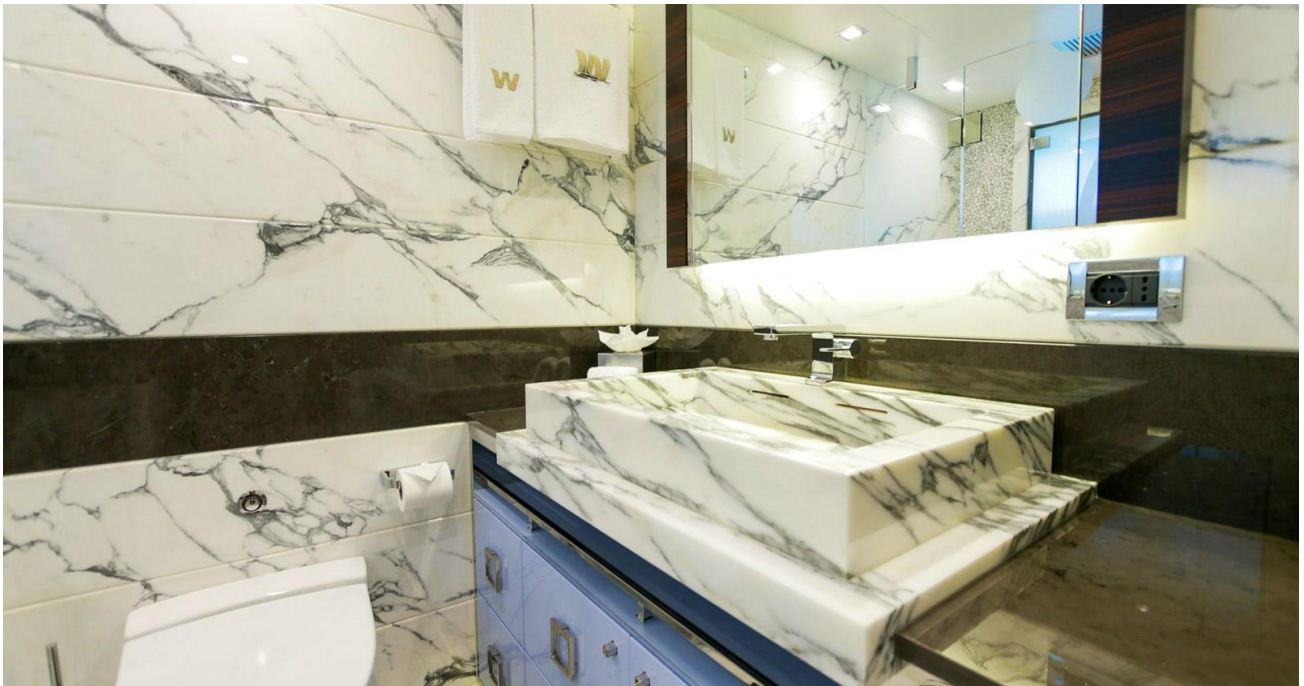
W-19



W-20



W-21



W-22



W-23



W-24



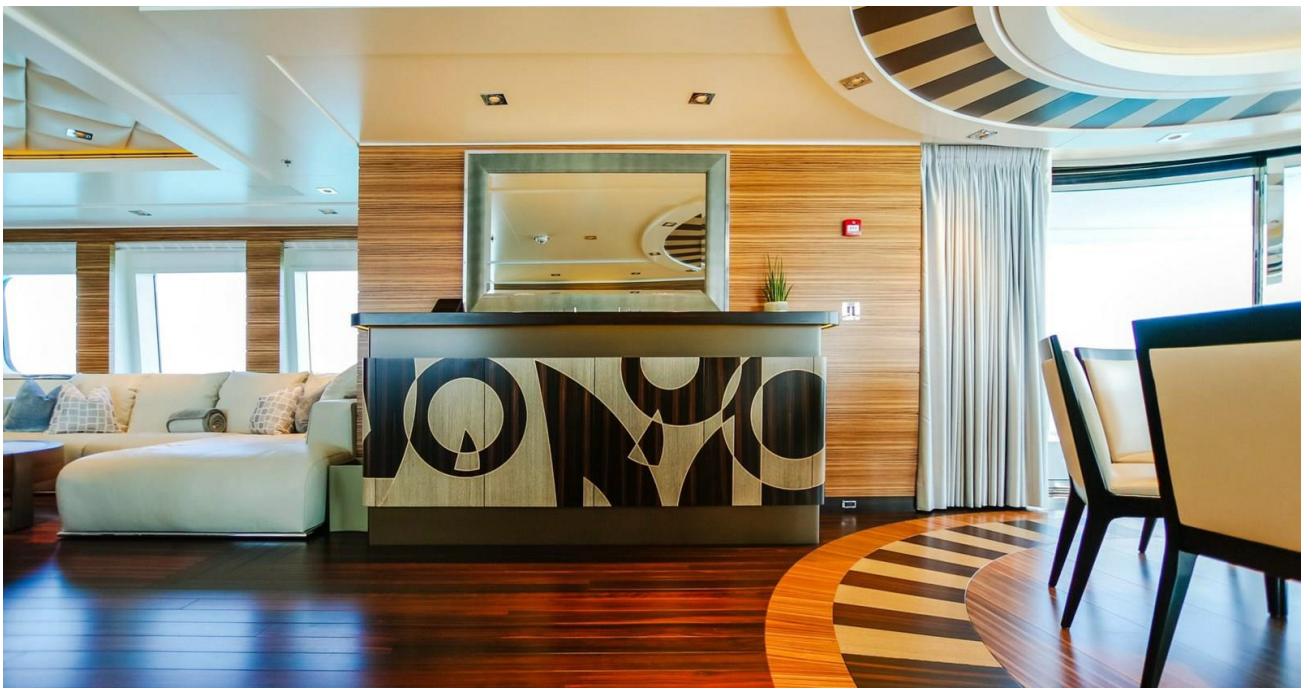
W-25



W-26



W-27



W-28



W-29



W-31



W-32



Yachtzoo - Monaco (Principal)
Fort Lauderdale Florida
33016 United States

Paul Madden
M: +1 (561) 568-3430
paul@yacht-zoo.com
www.yacht-zoo.com

W

W-33



W-34



Yachtzoo - Monaco (Principal)
Fort Lauderdale Florida
33016 United States

Paul Madden
M: +1 (561) 568-3430
paul@yacht-zoo.com
www.yacht-zoo.com

W

W-35



W-36



W-37



W-38



W-40



W-41



W-42



W-46



W-47



W-48



W-4



W-6



Yachtzoo - Monaco (Principal)
Fort Lauderdale Florida
33016 United States

Paul Madden
M: +1 (561) 568-3430
paul@yacht-zoo.com
www.yacht-zoo.com

W

W-7



W-52



Yachtzoo - Monaco (Principal)
Fort Lauderdale Florida
33016 United States

Paul Madden
M: +1 (561) 568-3430
paul@yacht-zoo.com
www.yacht-zoo.com

W

W-56



W-5



imga



W-58



Yachtzoo - Monaco (Principal)
Fort Lauderdale Florida
33016 United States

Paul Madden
M: +1 (561) 568-3430
paul@yacht-zoo.com
www.yacht-zoo.com

W

W-57



W-1



W-1 (1)

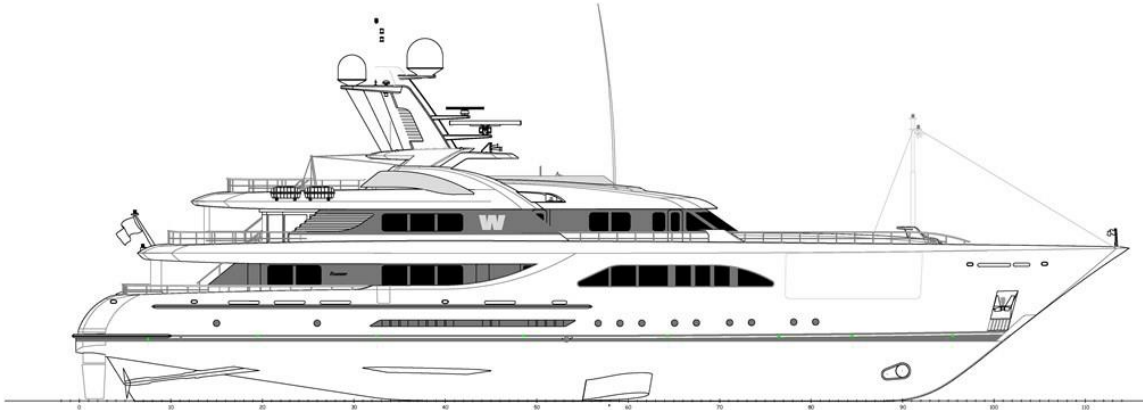


Yachtzoo - Monaco (Principal)
Fort Lauderdale Florida
33016 United States

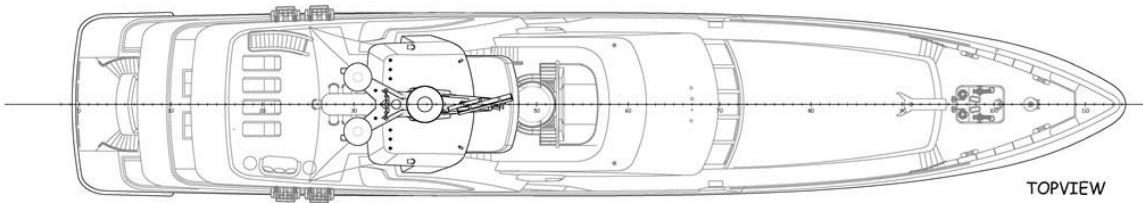
Paul Madden
M: +1 (561) 568-3430
paul@yacht-zoo.com
www.yacht-zoo.com

W

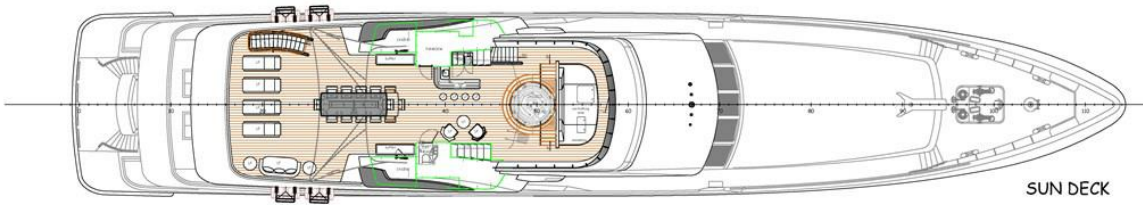
85000111_Refit_20190910-A0S voorlopig-GA01



PROFILE

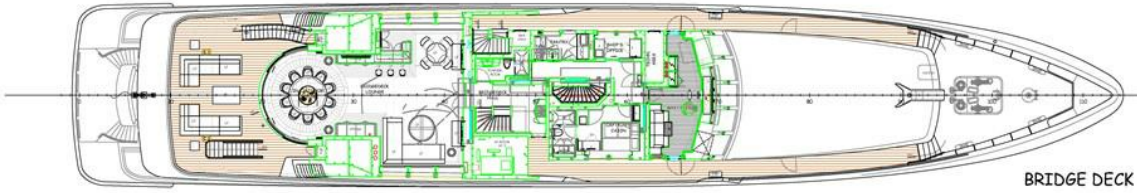


TOPVIEW

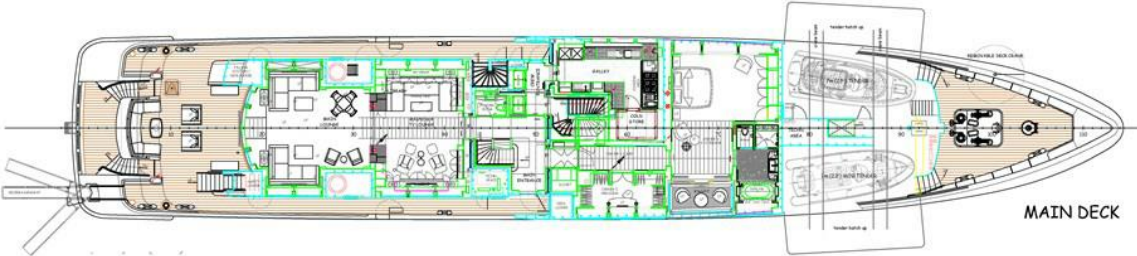


SUN DECK

85000111_Refit_20190910-A0S voorlopig-GA02



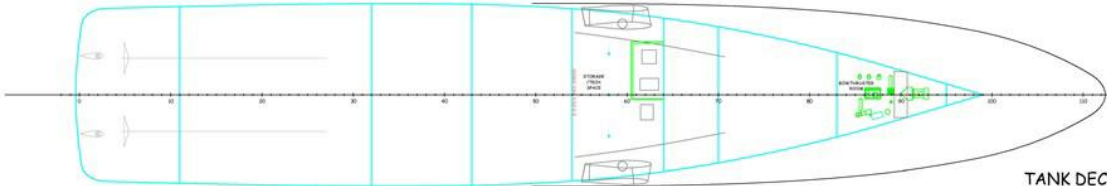
BRIDGE DECK



MAIN DECK



LOWER DECK



TANK DECK

NO.	DESCRIPTION	DATE	BY
1	ISSUED FOR CONSTRUCTION	15-02-2013	GA
2	REVISED	26-11-2011	GA
3	REVISED	16-06-2011	GA
4	REVISED	09-06-2011	GA
5	REVISED	27-05-2011	GA
6	REVISED	13-05-2010	GA
7	REVISED	31-08-2010	GA

L.F. = LOOSE FURNITURE - OWNER'S SUPPLY
THIS DRAWING IS A DESIGN CONCEPT. EXACT DIMENSIONS AND POSITIONS ARE NOT TO BE TAKEN FROM THIS DRAWING.

REVISION	DATE	DESCRIPTION	BY	CHECKED
F	As-Built	15-02-2013	GA	GA
1	15-02-2013	Updated to As-Built	GA	GA
2	26-11-2011	Revised according comments issued 26-11-2011	GA	GA
3	16-06-2011	Updated to yard comments 16-06-2011	GA	GA
4	09-06-2011	Updated to yard comments 03-05-2011	GA	GA
5	27-05-2011	General update	GA	GA
6	13-05-2010	General update	GA	GA
7	31-08-2010	Original issue	GA	GA

GENERAL ARRANGEMENT	
Project No.	2780
Design No.	685
Project Name	57.60m T.S. Diesel Motoryacht
Scale	1:100
Date	31-08-2010
Sheet No.	11
Total Sheets	12
Scale	1:1

DE VOOGT	
MARINE ARCHITECTS	
Architects	
4010 Rotterdam, 3000 AH Rotterdam	
The Netherlands	
T +31 (0)10 438 1111	
F +31 (0)10 438 1112	
E info@devoogt.nl	
www.devoogt.nl	

Yachtzoo - Monaco (Principal)
Fort Lauderdale Florida
33016 United States

Paul Madden
M: +1 (561) 568-3430
paul@yacht-zoo.com
www.yacht-zoo.com

W