

LAUREL



2006 DELTA

LOA:	240' (73.15m)	Delivery/Model	2006
Beam:	40' 3" (12.24m)	Year:	
Max Draft:	12' (3.66m)	Builder:	DELTA
Tonnage:	1,595.00	Type:	Motor Yacht Superyacht
Speed:	15 Knots 18 Knots	Staterooms:	7
Flag:	Cayman Island	Fuel Cap:	45783 Gal
Location:	West Palm Beach, Florida United States	Water Cap:	11000 Gal
VAT Paid:	US Duty Paid	Engines:	2x, Caterpillar, 3516B HD, 2500 HP
Price:	\$69,500,000 USD		

Additional Specifications For LAUREL:

LOA:	240' (73.15m)	Delivery/Model	2006
Beam:	40' 3" (12.24m)	Year:	
Min Draft:	12' (3.66m)	Year Built:	2006
Max Draft:	12' (3.66m)	Refit Year:	2014
Hull Material:	Steel	Builder:	DELTA
Superstructure:	GRP	Type:	Motor Yacht Superyacht
Deck Material:	Teak	Engines:	2500 HP, Twin, Inboard, Diesel, Caterpillar, 3516B HD, 22708hrs / 22708hrs
Tonnage:	1,595.00	Staterooms:	7
Range At Cruise	6000	Sleeps:	17
Speed:		Captain Cabin:	Yes
Range At Max		Classifications:	UMS LMC Lloyd's
Speed:	Cruising 15 Knots Max 18 Knots	MCA: Yes	ISM: Yes
Int Designer:	Donald Starkey		
Ext Designer:	Delta Design Group		
Fuel Capacity:	45783 Gal		
Water Capacity:	11000 Gal		
Flag:	Cayman Island		
Location:	West Palm Beach, Florida United States		
Price:	\$69,500,000 USD		
Tax Status:	US Duty Paid		

LAUREL 240'/73.15m Delta 2006/2014 Description

World Renowned LAUREL 240'/73.15m Delta 2006/2014 - A TOP pedigree vessel from Delta Marine, the most iconic of all US yachts.

A TOP pedigree vessel from Delta Marine, the world renowned 240' (73.15m) LAUREL is one of the most significant US built yachts. Famously designed by Donald Starkey, LAUREL offers an abundance of luxury amenities providing 12 guests with an unbeatable experience while cruising. A popular charter vessel that will undoubtedly catch the attention of any savvy owner, LAUREL is the perfect ownership opportunity. With her bright blue hull and classic lines, she is the epitome of elegance.

LAUREL's clever layout offers both intimate social spaces and expansive deck spaces perfect for entertaining. Her interior design introducing exotic woods, glass, large windows, and big volume with a 40' beam sets LAUREL apart. Not to mention her crowning features: a spa pool, gymnasium, enormous beach club, and 7 staterooms.

LAUREL is particularly well-suited to families, features a child-friendly set-up and countless toys to keep them entertained while on board. Guests will enjoy seamless access to the water with her enormous beach club and can travel between all decks via her elevator.

The flexible cabin arrangement offers a range of options for guests. In addition to the on-deck master suite, LAUREL has four identical king cabins, a queen with a single and pullman, and an optional seventh cabin that is equipped with Murphy beds and/or massage table. The full beam owner's suite offers two private balconies, a service alcove, lounge, study and his and hers ensuite bathrooms – a true oasis on board.

There are several generous social areas to enjoy on board LAUREL. The library and media room can host movie nights or intimate cocktail evenings. For al fresco entertaining, she benefits from two generous dining areas on the aft deck and bridge deck, while her sun deck offers loungers and a jacuzzi to enjoy throughout the day. Her sky lounge also acts as a second salon for air-conditioned comfort with a view.

MAIN DECK

Main Salon

A wide ranging salon with a classic club design, glossy burlwood and large windows provide ever changing views of your destination. Oversized settees and classic upholstered chairs make this a perfect spot for aperitifs and conversation. The large TV screen is concealed by artwork which can be ready for viewing with a touch of a button.

Formal Dining Salon

Yachtzoo - Monaco (Principal)
Fort Lauderdale Florida
33016 United States

Paul Madden
M: +1 (561) 568-3430
paul@yacht-zoo.com
www.yacht-zoo.com

LAUREL

The formal dining salon is located forward of the Main Salon of which can be closed off for intimate dinners. Up to sixteen guests can be seated at the high gloss bond wood table and leaves may be removed for more modest parties. Custom storage for all linens, China and crystal allows guests to enjoy an array of presentations throughout their stay onboard.

Master Office & Ensuite

Enter the main deck Master Suite by beginning in the private Owner's office. This allows the Owner to be efficient with business in the outside world while underway. Private balconies on port and starboard side are ideal for your morning coffee or night cap.

The sleeping and sitting area of the Master Suite has a warmth to her with rich fabrics complementing the natural wood textures and finishes; and is highly spacious. The entertainment system can be hidden when not in use.

The Master Ensuite is finished in antique travertine and gold leaf with his and her sinks and mirrors; a separate toilet room and double shower room.

BRIDGE DECK

LAUREL's bridge deck has an informal atmosphere and fantastic views. The aft deck has ample seating for relaxation and fun in the sun. Under the fixed cover is a large shaded area for dining and conversation. The aft deck dining table easily accommodates 16 guests. Under the fixed cover is a large shaded area for dining and conversation. Step through the double doors to the sky lounge, a favorite spot for breakfast. A separate library and media room is a cozy spot for reading, games or watching movies.

SUN DECK

LAUREL's versatile top deck is outfitted for outdoor and indoor fun. Large sunpads and chaise lounges are located aft on the deck. Just forward is the Jacuzzi. An enclosed glass shower is perfect for cooling down after a workout in the well-equipped gym located in the center of the sun deck. The observation lounge forward can be used as a sitting room with card table or as a beautiful setting for an intimate dinner. The lounge area with wet bar forward is protected by removable sun sails.

LOWER DECK

Six guest cabins are located on the lower deck and offer a variety of configurations depending on guest requirements. The four king suites have bathrooms with twin sinks and showers en suite, writing desk and arm chairs. The two queen suites each have bathtubs and twin sinks. One is easy to set up as a children's room with a single bed + pullman bed in addition to the queen. The 7th stateroom can serve as a massage / spa room (upon request) or as a staff/security room with a Murphy style Queen size bed and/or Twin bed inclusive

of ensuite head with Jacuzzi tub/shower and double sinks.

ENGINE ROOM

LAUREL was built expressly for traveling the world in safety and comfort. The engine room is amazingly clean, efficient and set up for consistent maintenance. Ship systems are robust and designed for reliability of performance. Tenders and toys are safely secured in garages, leaving deck spaces uncluttered and available for guest use at all times. Guests can enjoy a sea-faring adventure with complete confidence.

LAUREL 240'/73.15m Delta 2006/2014 Specs

MACHINERY

Engines & Generators:

Engines: 2 x Caterpillar 3516B, 2500hp @ 1650 rpm - (January 2023)

- Port: 21,499
- Starboard:21,499

Major Overhaul completed November 2019 as part of Class Requirement

Generators: 3 x Caterpillar C9, 460V/ 250 kW @1800 RPM (January 2023)

- Port: 21,045
- Mid: 21,784
- Starboard: 21,965

Fuel Consumption; RPM/Gallons Per Engine

- 1000/30
- 1100/40
- 1200/50
- 1300/60
- 1450/90

Fuel Consumption: 20 GPH (Average for the Day)

Emergency Generators: Cummins 6CTAS 130 kW, 460Vac, 60Hz

- 208 hours

SHORE POWER

Magnus 1B-100-101

- Input: 3PH-E 180-5
- 20Vac, 2x250A, 47-64Hz
- Output: 3PH-E 460Vac, 376A, 60Hz @ 1pm (July 2020)

STABILIZERS / THRUSTERS / WATERMAKER

Quantum QC1800 - x4 Fin, Zero Speed

Bow Thruster - Jastram BU40F, 250kW

Stern Thruster - Jastram W20 Azimuth, 150 kW

Watermaker - x2 HEM 4800, Reverse Osmosis, 18,000 LPD each

AV EQUIPMENT:

- AV - Crestron; Upgrade Completed 2015

- IT - VSAT; x2 Intellian V130NX (New 2020)
- Sat TV
- LED HDTV's throughout
- Central Apple TV
- Apple Airplay
- Xbox 360
- Kaleidescape movie library
- Cinema Room Conversion from Library Room.
- Frankentak Security Camera/ Monitoring System with Night Vision
- 1200 Point Alarm and Monitoring System

-

DECK FACILITIES:

Windlass

- x2 Muir VRC20000/307, Capstan
- x4 Muir VC13000

MOB Crane - Nautical Structures EZ3000

Passerelle – Nautical Structures 13847

Tender Garage Davit Cranes

Nautica RIB 15 Yamaha T60TLR 122hrs

Nautica RIB 22 WB Yamaha VF 250XA New 2018 558 hrs

Nautica RIB 25 MerCruiser Bravo

x2 Stern Drive New

2017 Yanmar 6LPTA-STP2R 176 hrs (New 2020)

Jetskis – x2 Yamaha EX105AX 26hrs/27hrs (New 2021)

SECURITY & SAFETY EQUIPMENT

Security – Frankentek, Hirsch, Panasonic

Fire Detection – Notifier AFP-200

Fire Protection – Marioff Hi-Fog Water Mist System

Fire Doors – DSG

Watertight Doors - Tebul

GALLEY & LAUNDRY EQUIPMENT

Crew Galley

- Oven - x2 MKN EKECOD610T0005
- Cooktop – x3 Vulcan EV12

Yachtzoo - Monaco (Principal)
Fort Lauderdale Florida
33016 United States

Paul Madden
M: +1 (561) 568-3430
paul@yacht-zoo.com
www.yacht-zoo.com

LAUREL

- Refrigerator – Cospolich R40-2M-SM-MLR
- Freezer – Cospolich F20-2M ADSM-MLR
- Dishwasher – Hobart FPA-SEF
- Ice Maker - Manitowoc QM30A

Guest Galley

- Oven - x2 MKN EKECOD610T0005, Cooktop
- x3 Vulcan EV12
- Refrigerator – Cospolich R41-2M-SM-MLR
- Freezer – Cospolich R13F172M ADSM-MLR
- Dishwasher – Hobart FPA-SEF
- Ice Maker – Manitowoc QM30A

Laundry

- Washers – x3 Miele WSF100S0 10Kg
- Miele WSFD71LP 7.5Kg
- Miele WSE 5425 5Kg

Dryers

- x3 Miele T6251EL 10 Kg
- Miele T6185 7.5Kg
- Roller Iron – Miele HM2110050
- Dryer Cupboard – Electrolux TS460

GUEST ACCOMMODATIONS:

Stateroom Configurations:

1. Master Stateroom: Main Deck, King Bed, His/Hers Bath
2. King, Ensuite Shower - Twin Sinks
3. King, Ensuite Shower - Twin Sinks
4. King, Ensuite Shower - Twin Sinks
5. King, Ensuite Shower - Twin sinks
6. Queen + Single Bed + Pullman, Ensuite Shower/Jacuzzi Bath - Twin Sinks
7. Massage Room / Queen Murphy Bed + Twin Murphy Bed, Ensuite Shower/Jacuzzi Bath - Twin Sink

GYM EQUIPMENT

TechnoGym Equipment

- Stationary bike
- Elliptical
- Treadmill
- Weight machine
- Weight bench
- Free weights

Disclaimer

Any yachts offered are subject to still being available. Their particulars are believed correct, but their contents are not guaranteed, neither may they be used for contractual purposes. All speeds, measurements, capacities, consumptions, etc., may be approximate or estimated. Specifications provided for information only. Data was obtained from sources believed to be reliable and is not guaranteed by Owner or Brokers. Buyer assumes the responsibility to ascertain the correctness of all data contained herein and otherwise provided and must instruct his agent and surveyors to confirm all details for accuracy prior to purchase. Subject to prior sale, price and inventory change, or withdrawal from market without notice.

LAUREL 240'/73.15m Delta 2006/2014 Motor Yacht: Artist Rendering



LAUREL 240'/73.15m Delta 2006/2014 Motor Yacht



Yachtzoo - Monaco (Principal)
Fort Lauderdale Florida
33016 United States

Paul Madden
M: +1 (561) 568-3430
paul@yacht-zoo.com
www.yacht-zoo.com

LAUREL

LAUREL 240'/73.15m Delta 2006/2014 Motor Yacht



LAUREL 240'/73.15m Delta 2006/2014 Motor Yacht



LAUREL 240'/73.15m Delta 2006/2014 Motor Yacht: Forward Sun Deck



LAUREL 240'/73.15m Delta 2006/2014 Motor Yacht: Forward Sun Deck



Yachtzoo - Monaco (Principal)
Fort Lauderdale Florida
33016 United States

Paul Madden
M: +1 (561) 568-3430
paul@yacht-zoo.com
www.yacht-zoo.com

LAUREL

LAUREL 240'/73.15m Delta 2006/2014 Motor Yacht: Observation Room, Sun Deck Forward



LAUREL 240'/73.15m Delta 2006/2014 Motor Yacht: Jacuzzi



LAUREL 240'/73.15m Delta 2006/2014 Motor Yacht: Bridge Deck Seating



LAUREL 240'/73.15m Delta 2006/2014 Motor Yacht: Bridge Deck Seating



LAUREL 240'/73.15m Delta 2006/2014 Motor Yacht: Bridge Deck Dining



LAUREL 240'/73.15m Delta 2006/2014 Motor Yacht: Bridge Deck Dining



LAUREL 240'/73.15m Delta 2006/2014 Motor Yacht: Sky Lounge



LAUREL 240'/73.15m Delta 2006/2014 Motor Yacht: Sky Lounge



LAUREL 240'/73.15m Delta 2006/2014 Motor Yacht: Sky Lounge



LAUREL 240'/73.15m Delta 2006/2014 Motor Yacht: Sky Lounge



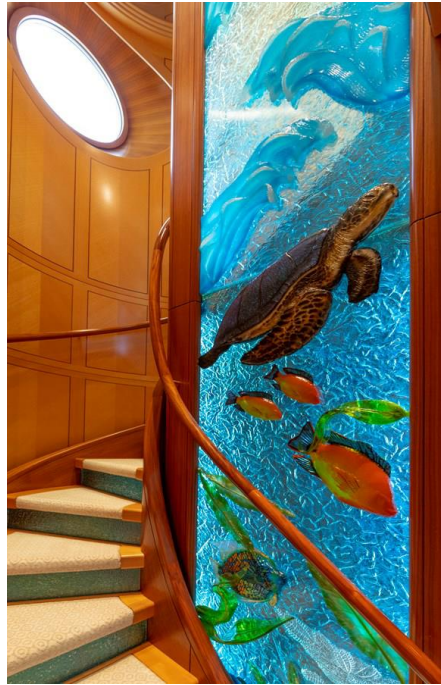
LAUREL 240'/73.15m Delta 2006/2014 Motor Yacht: Library



LAUREL 240'/73.15m Delta 2006/2014 Motor Yacht: Library



LAUREL 240'/73.15m Delta 2006/2014 Motor Yacht: Main Staircase



LAUREL 240'/73.15m Delta 2006/2014 Motor Yacht: Main Deck



LAUREL 240'/73.15m Delta 2006/2014 Motor Yacht: Main Deck



LAUREL 240'/73.15m Delta 2006/2014 Motor Yacht: Main Salon



LAUREL 240'/73.15m Delta 2006/2014 Motor Yacht: Main Salon



LAUREL 240'/73.15m Delta 2006/2014 Motor Yacht: Main Salon



LAUREL 240'/73.15m Delta 2006/2014 Motor Yacht: Main Salon Dining



LAUREL 240'/73.15m Delta 2006/2014 Motor Yacht: Private Master Office



LAUREL 240'/73.15m Delta 2006/2014 Motor Yacht: Master Stateroom



LAUREL 240'/73.15m Delta 2006/2014 Motor Yacht: Master Stateroom



LAUREL 240'/73.15m Delta 2006/2014 Motor Yacht: Master Stateroom



LAUREL 240'/73.15m Delta 2006/2014 Motor Yacht: Master Balcony



LAUREL 240'/73.15m Delta 2006/2014 Motor Yacht: View from Master Balcony



LAUREL 240'/73.15m Delta 2006/2014 Motor Yacht: Master Ensuite



LAUREL 240'/73.15m Delta 2006/2014 Motor Yacht: Master Ensuite



LAUREL 240'/73.15m Delta 2006/2014 Motor Yacht: VIP Stateroom



LAUREL 240'/73.15m Delta 2006/2014 Motor Yacht: Guest Stateroom



LAUREL 240'/73.15m Delta 2006/2014 Motor Yacht: Guest Stateroom



LAUREL 240'73.15m Delta 2006/2014 Motor Yacht: Twin Stateroom



LAUREL 240'73.15m Delta 2006/2014 Motor Yacht: Massage Room or Stateroom



LAUREL 240'/73.15m Delta 2006/2014 Motor Yacht: Private Gym



LAUREL 240'/73.15m Delta 2006/2014 Motor Yacht: Beach Club



Yachtzoo - Monaco (Principal)
Fort Lauderdale Florida
33016 United States

Paul Madden
M: +1 (561) 568-3430
paul@yacht-zoo.com
www.yacht-zoo.com

LAUREL

LAUREL 240'/73.15m Delta 2006/2014 Motor Yacht: Tender Bay



LAUREL 240'/73.15m Delta 2006/2014 Motor Yacht: Tender Bay

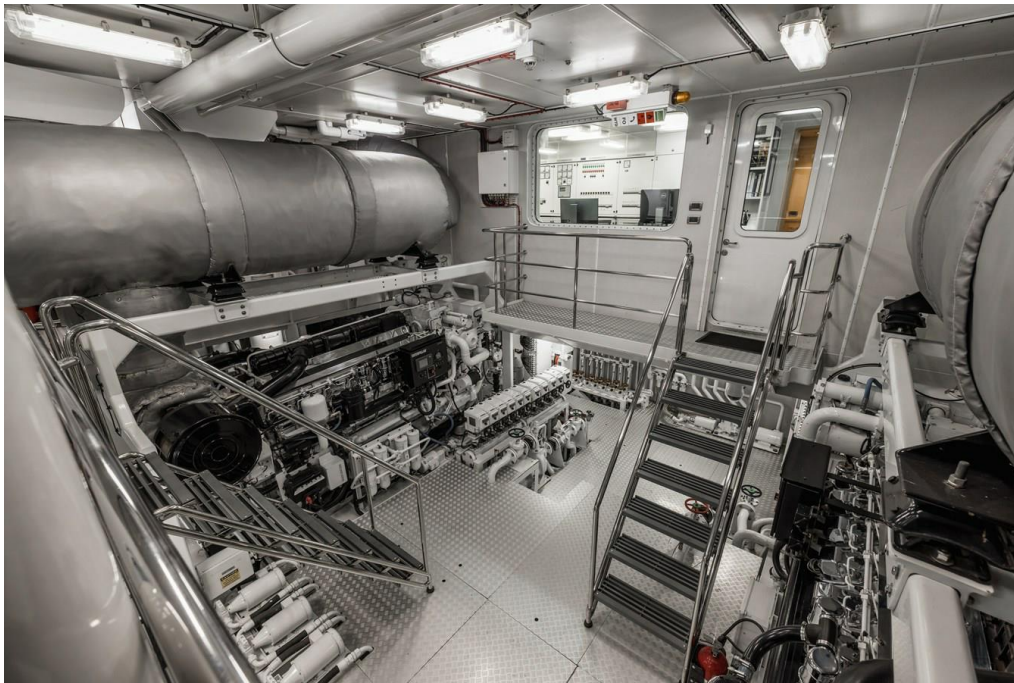


Yachtzoo - Monaco (Principal)
Fort Lauderdale Florida
33016 United States

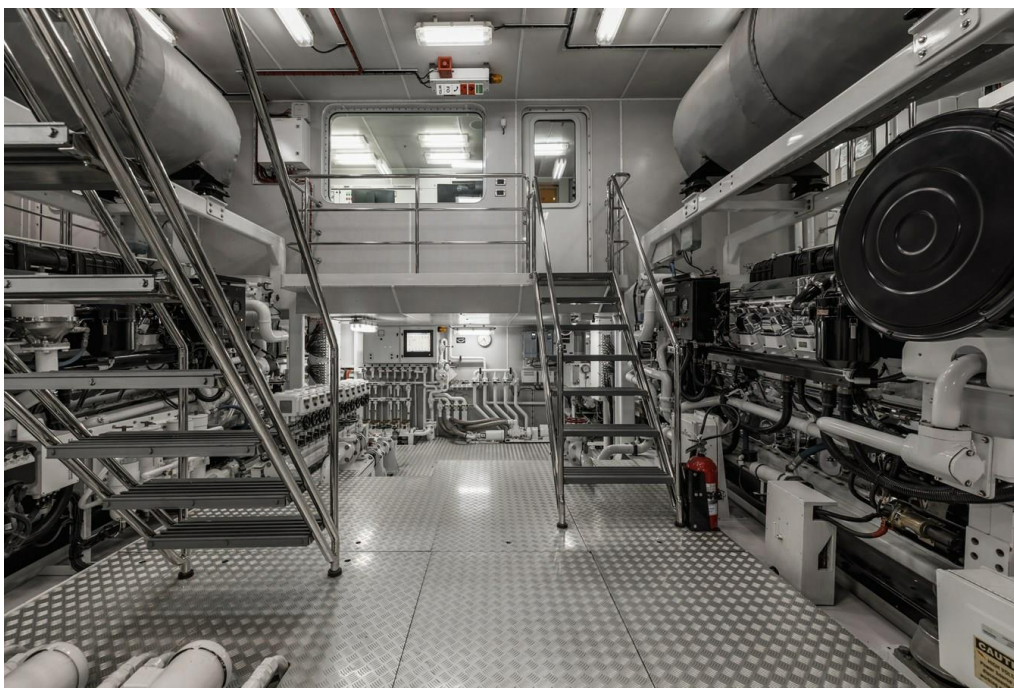
Paul Madden
M: +1 (561) 568-3430
paul@yacht-zoo.com
www.yacht-zoo.com

LAUREL

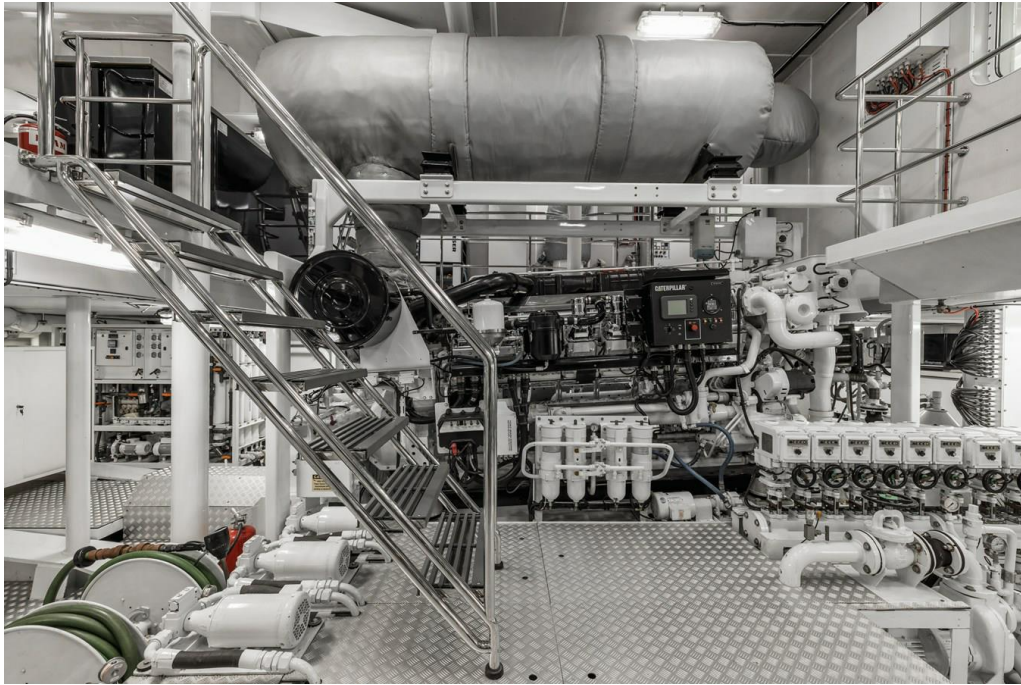
LAUREL 240'/73.15m Delta 2006/2014 Motor Yacht: Engine Room



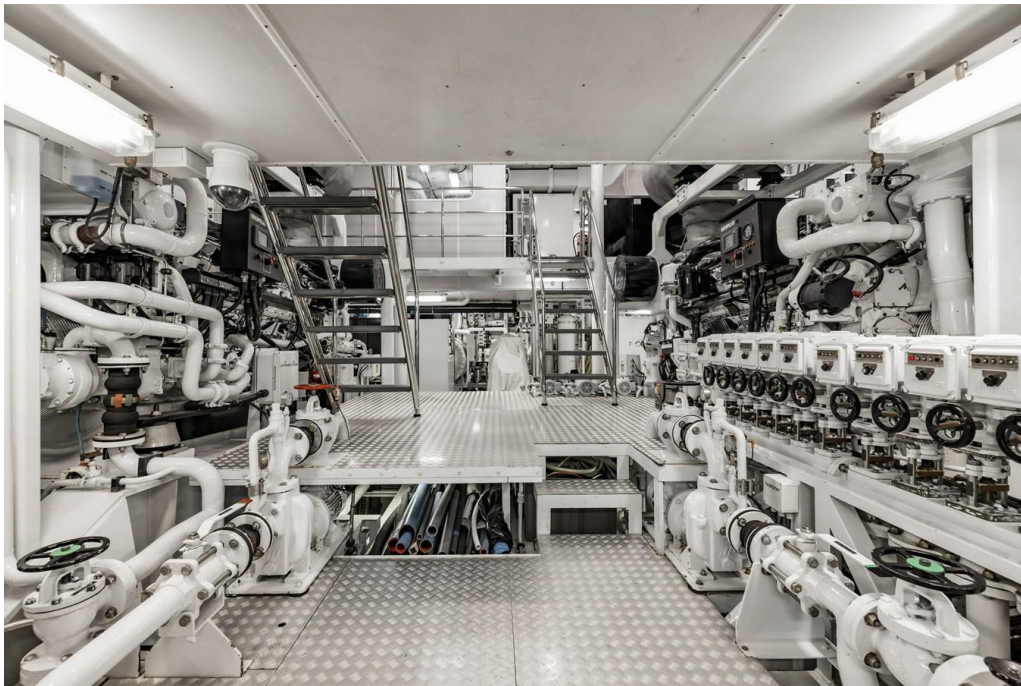
LAUREL 240'/73.15m Delta 2006/2014 Motor Yacht: Engine Room



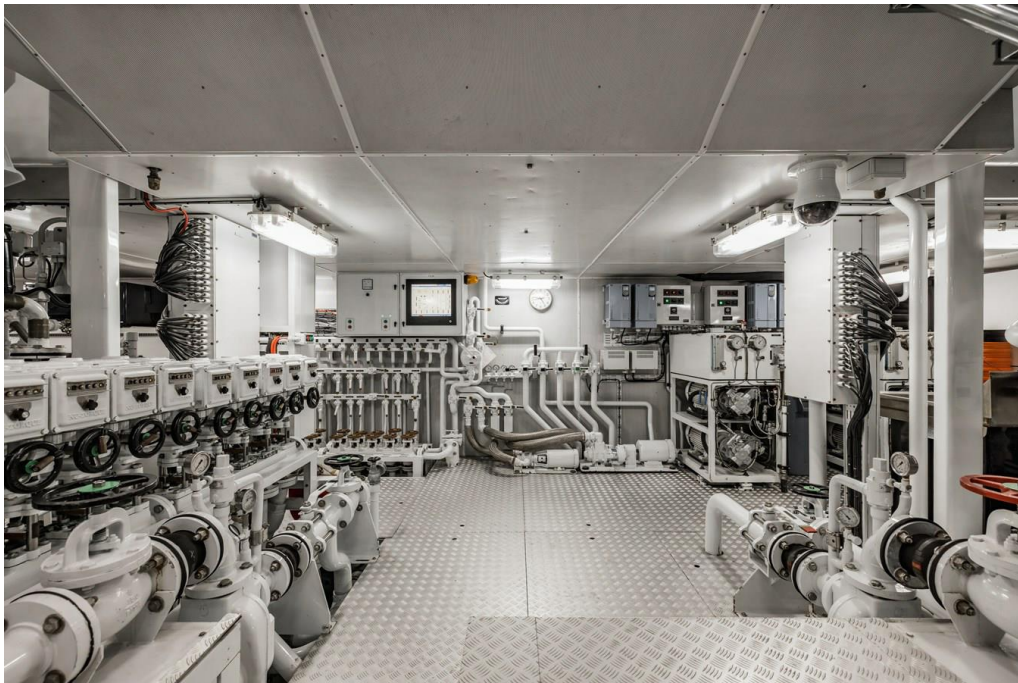
H69A8506LAUREL 240'/73.15m Delta 2006/2014 Motor Yacht: Engine Room



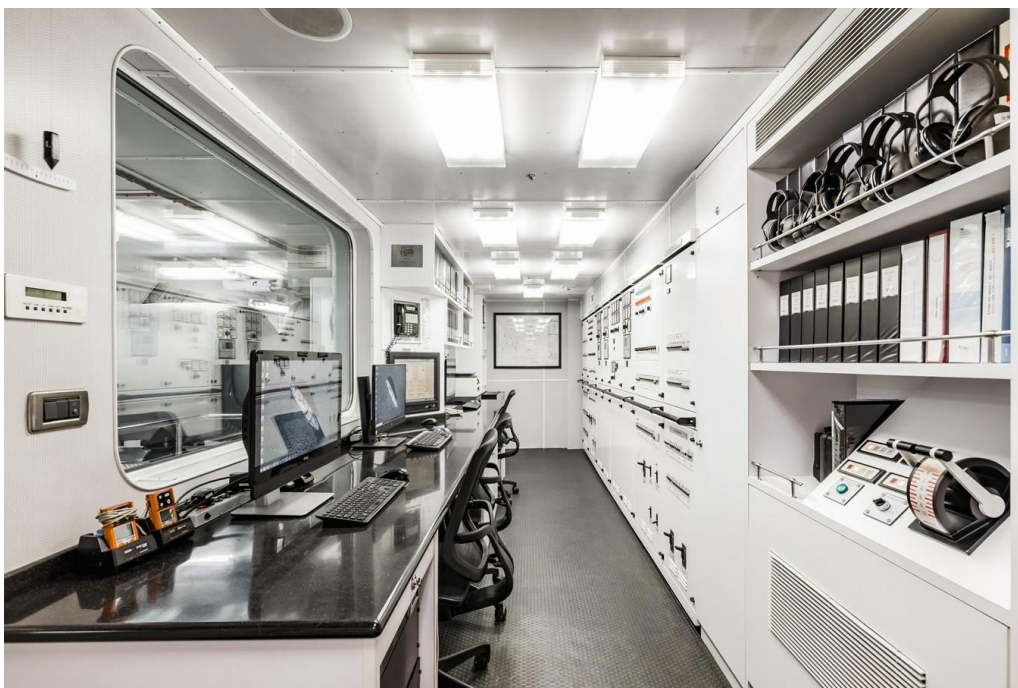
LAUREL 240'/73.15m Delta 2006/2014 Motor Yacht: Engine Room



LAUREL 240'/73.15m Delta 2006/2014 Motor Yacht: Engine Room



LAUREL 240'/73.15m Delta 2006/2014 Motor Yacht: Engine Office



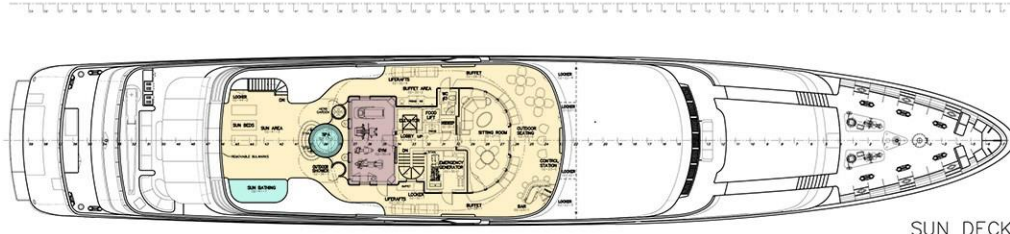
LAUREL 240'/73.15m Delta 2006/2014 Motor Yacht: Engine Room



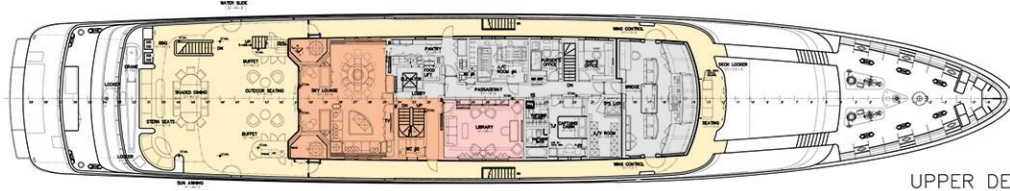
H69A8662



LAUREL 240'/73.15m Delta 2006/2014 Motor Yacht



SUN DECK



UPPER DECK

REV NO	REVISIONS	BY	DATE
1	1) UPDATED CREW ACCESS DOOR (COMP # 2-20-1)	JAME	8-21-04
2	2) UPDATED BULKHEAD DOORS ON MAIN DECK	JAME	7-28-04
3	3) ADDED TECHNICAL DOORS (COMP # 2-22-4) AND UPDATED DECK LOANSE (COMP # 1-35-0) PER DSD	JAME	8-18-04
4	4) UPDATED COMPARTMENTS (1-28-5, 1-29-5, 1-29-6, 1-29-7, 1-29-8, 1-29-9, 1-29-10, 1-29-11, 1-29-12, 1-29-13, 1-29-14, 1-29-15, 1-29-16, 1-29-17, 1-29-18, 1-29-19, 1-29-20, 1-29-21, 1-29-22, 1-29-23, 1-29-24, 1-29-25, 1-29-26, 1-29-27, 1-29-28, 1-29-29, 1-29-30, 1-29-31, 1-29-32, 1-29-33, 1-29-34, 1-29-35, 1-29-36, 1-29-37, 1-29-38, 1-29-39, 1-29-40, 1-29-41, 1-29-42, 1-29-43, 1-29-44, 1-29-45, 1-29-46, 1-29-47, 1-29-48, 1-29-49, 1-29-50, 1-29-51, 1-29-52, 1-29-53, 1-29-54, 1-29-55, 1-29-56, 1-29-57, 1-29-58, 1-29-59, 1-29-60, 1-29-61, 1-29-62, 1-29-63, 1-29-64, 1-29-65, 1-29-66, 1-29-67, 1-29-68, 1-29-69, 1-29-70, 1-29-71, 1-29-72, 1-29-73, 1-29-74, 1-29-75, 1-29-76, 1-29-77, 1-29-78, 1-29-79, 1-29-80, 1-29-81, 1-29-82, 1-29-83, 1-29-84, 1-29-85, 1-29-86, 1-29-87, 1-29-88, 1-29-89, 1-29-90, 1-29-91, 1-29-92, 1-29-93, 1-29-94, 1-29-95, 1-29-96, 1-29-97, 1-29-98, 1-29-99, 1-29-100)	JAME	9-10-04
5	5) UPDATED FOR COMMENTS FROM 8-10-04 OWNERS MEETING	JAME	9-18-04
M	1) UPDATED DRAWING WITH CURRENT INFORMATION FROM SHOP DRAWINGS (COMP # 3-02-0)	JAME	2-4-05
2	2) UPDATED EXTERIOR CABINETS AND MULTIPLE SEATING	JAME	4-1-05
3	3) CORRECTED WINDLASS LOCATIONS	JAME	4-1-05
N	1) REMOVED DECK STONES FROM COMP # 3-20-2 AND MOVED CREW DRY TO COMP # 3-02-0	JAME	4-7-05
2	2) UPDATED MAINT EQUIPMENT LAYOUT, LAZARETTE, PORT AND STBD TECHNICAL SPACE	JAME	4-7-05
D	1) UPDATED INTERIOR FOR LATEST APPROVED ARRANGEMENTS	JAME	5-4-05
2	2) ADDED HEATER TO LAZARETTE (3-08-1)	JAME	5-4-05
3	3) REMOVED TEXT FROM TENDERS	JAME	5-4-05
4	4) ADDED CABINET ON END OF LAZARETTE (3-04-0)	JAME	5-4-05
5	5) ADDED THE BEAR PAW TO DECK DECK (3-05-0)	JAME	5-4-05
6	6) ADDED FROST TEXT TO BAR (2-23-5)	JAME	5-10-05
7	7) CHANGED BOOT STRIP LAYOUT PER OWNERS MEETING	JAME	5-10-05
F	1) UPDATED COMPT NUMBERS FOR CHANGES TO DRAWING NO. 23001H-813-02	JAME	8-23-05
2	2) UPDATED COMPT NUMBERS FOR CHANGES TO DRAWING NO. 23001H-813-02	JAME	11-9-05

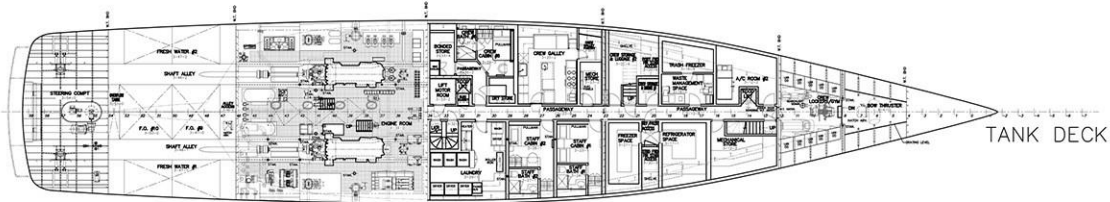
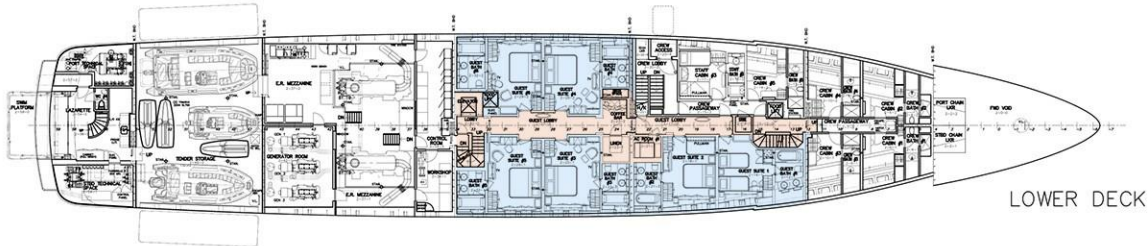
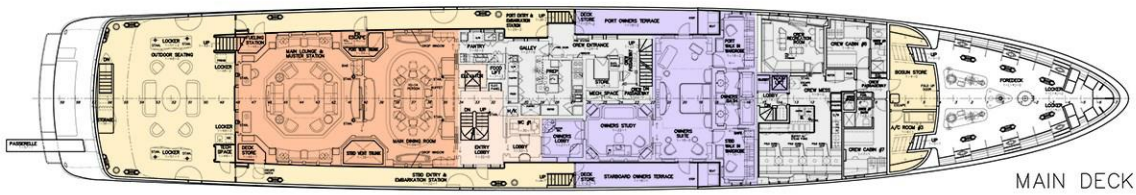
REV NO	REVISIONS	BY	DATE
1	1) ADDED DOOR BETWEEN TENDERS FROM THE UPDATED LOWER DECK GUEST SWR PER DSD, BRDL, STANCHIONS, LAZARETTE LAYOUT & PORTLIGHTS	JAME	1-13-04
2	2) UPDATED BOOT STRIP, TENDING POINTS, GUYS & HARKS HOLES	JAME	2-17-04
3	3) DELETED PULPIT/LIBRARY STAIR (COMP # 1-15-0) & UPDATED CREW REC ROOM	JAME	3-23-04
4	4) UPDATED TOP HATCH ROOF & PULPIT, FIRE DOORS ON GAL, MAIN LOANSE, BRDL, PORTIC (3-15, 3-16) & BRDL	JAME	3-5-04
5	5) UPDATED TENDER STORAGE ARRANGEMENT AND ADJUSTED TENDER STORAGE PORTLIGHTS ON PULPIT	JAME	3-10-04
6	6) UPDATED FOR COMMENTS FROM 3-10-04 OWNERS MEETING	JAME	3-18-04
N	1) UPDATED OVER LOCKERS (COMP # 1-08-0) PER OWNERS	JAME	4-18-04
2	2) UPDATED SHELVE (COMP # 1-07-0), PANTRY (COMP # 1-32-0) SITTING ROOM (2-27-0), SWR (2-28-0) AND HATCHES (2-27-0)	JAME	5-13-04
3	3) UPDATED MAINT AND SWR DECK COACH ROOF	JAME	5-19-04
4	4) UPDATED SWR DECK, BRDL, AND EXTERIOR SEATING, CONTROL ROOM TO ENGINE ROOM (LIBRARY), GAL, MAIN LOANSE, HATCH UPPER DECK W/ SWR AND THE KEEP LUG	JAME	5-27-04
5	5) UPDATED STORE (COMP # 1-24-0) AND REMOVED H/W (COMP # 1-24-0)	JAME	5-18-04
6	6) UPDATED EMERGENCY SWR ROOM, A/C ROOMS #3 AND 4	JAME	8-10-04

Yachtzoo - Monaco (Principal)
 Fort Lauderdale Florida
 33016 United States

Paul Madden
 M: +1 (561) 568-3430
 paul@yacht-zoo.com
 www.yacht-zoo.com

LAUREL

LAUREL 240'/73.15m Delta 2006/2014 Motor Yacht



DESIGN NO.	23600H	DISTRIBUTION	
YEAR	2006	DESIGNER	DELTA
CLASS	236 FT MOTOR YACHT	PROJECT NO.	
METN		SCALE	1/8"=1'-0"
METAL		DATE	
ELECT		BY	
COWNER		CHECKED	
LR		APPROVED	
CDR		PROJECT NUMBER	23600H/813-01-01
PRJ. MGR		SCALE	1/8"=1'-0"

Yachtzoo - Monaco (Principal)
 Fort Lauderdale Florida
 33016 United States

Paul Madden
 M: +1 (561) 568-3430
 paul@yacht-zoo.com
 www.yacht-zoo.com

LAUREL