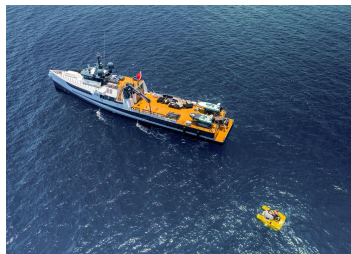


Axis



2016 DAMEN

LOA:	181' 6" (55.3m)	Delivery/Model	2016
Beam:	30' 5" (9.25m)	Year:	
Max Draft:	12' (3.66m)	Builder:	DAMEN
Tonnage:	462.00	Type:	Motor Yacht
Speed:	12 Knots	Fuel Cap:	196000 L (51777.72 Gal)
	20 Knots	Water Cap:	30000 L (7925.16 Gal)
Flag:	Bahamas	Engines:	4x, Caterpillar, 3512C TA, 1118 HP
Location:	West Palm Beach, Florida United States		
VAT Paid:			
Price:	\$17,500,000 USD		

NOT AVAILABLE FOR SALE TO U.S RESIDENTS WHILE

Additional Specifications For Axis:

LOA:	181' 6" (55.3m)	Delivery/Model	2016
Beam:	30' 5" (9.25m)	Year:	
Max Draft:	12' (3.66m)	Year Built:	2016
Hull Material:	Steel	Builder:	DAMEN
Superstructure:	Steel	Type:	Motor Yacht
Tonnage:	462.00	Engines:	1118 HP, Quad, Diesel, Caterpillar, 3512C TA, 4093hrs / 4118hrs
Range At Cruise Speed:		Sleeps:	8
Range At Max Speed:		Crew Berths:	4
Speed:	Cruising 12 Knots Max 20 Knots	Captain Cabin:	No
Int Designer:	Dupuis Design / Patrick Dupuis	Classifications:	
Ext Designer:	Damen Shipyards	MCA: ISM:	
Fuel Capacity:	196000 L (51777.72 Gal)		
Water Capacity:	30000 L (7925.16 Gal)		
Flag:	Bahamas		
Location:	West Palm Beach, Florida United States		
Price:	\$17,500,000 USD		

DETAILED DESCRIPTION

1. MAIN CHARACTERISTICS

TYPE	Full Displacement Motor Yacht
BUILDER	Damen Yachting
MODEL	YS 5009
HULL NO.	5009 / 1
IMO NUMBER	9779070
MMSI NUMBER	311001401
NAVAL ARCHITECT	Damen Shipyards
EXTERIOR DESIGN	Damen Shipyards
INTERIOR DESIGN	Dupuis Design / Patrick Dupuis
YEAR	2016
CLASSIFICATION	Bureau Veritas
CONSTRUCTION	Steel Hull & Superstructure
CREW	Up to 11
FLAG	Bahamas
ENGINES	4 x 1,118 kW (1,499 Hp) Caterpillar 3512C TA
GT	462
NT	138
HELICOPTER DECK	Max take-off weight 3,700kg

2. DIMENSIONS

LOA	55.30m / 181'5"
LWL	54.00m / 177'2"
BEAM	9.25m / 30'4"
DRAFT	3.66m / 12'0" max
EXTERIOR DECKSPACE	225 m ² / 2,422 Sq ft free space

3. SPEED & RANGE UNDER POWER

MAXIMUM SPEED	20.00 knots
CRUISING SPEED	12.00 knots
FUEL CONSUMPTION	1,135 litres / hour @ 18 Knots

4. CAPACITIES

ACCOMMODATION	6+2 guests in 3 cabin(s)
CREW	11 crew crew in 4 cabin(s)
FUEL	196,000 litres / 60,760 US gallons
FRESH WATER	30,000 litres / 7,925 US gallons
LUBE OIL	1,048 litres / 277 US gallons

DIRTY OIL	1,359 litres / 359 US gallons
GREY/BLACK WATER	12,500 litres / 3,302 US gallons

5. **ACCOMMODATION**

Accommodation for up to 6+2 guests in 3 cabins and up to 11 crew

GUEST CABINS	2 x Queen double cabins with pullman 1 x 4 Berth cabin
CREW CABINS	1 x Captain cabin with pullman 3 x Crew cabins

6. **MECHANICAL EQUIPMENT**

ENGINES	4 x 1,118 kW (1,499 Hp) Caterpillar 3512C TA Diesel
ENGINE HOURS	Eng.1: 4,093 hours as of 08th Oct 2024 Eng.2: 4,118 hours as of 08th Oct 2024 Eng.3: 4,123 hours as of 08th Oct 2024 Eng.4: 4,120 hours as of 08th Oct 2024
GENERATORS	3 x 99 kW (133 Hp) Caterpillar C4.4
GENERATOR HOURS	Port: 2,053 hours as of 08th Oct 2024 Centre: 1,641 hours as of 08th Oct 2024 Starboard: 2,140 hours as of 08th Oct 2024
STABILISERS	Quantum Marine at anchor
AIR CONDITIONING	Cuge Marine 3 x Blitzer Compressors
BOWTHRUSTER	Yes (x2)
PROPULSION	4 x Direct Shaft Driven Props
PROPELLERS	Fixed Blade
STEERING SYSTEM	4 x Sperry Marine Steering Systems
ELECTRICITY	415 / 208V / 120V
SHORE POWER	ATLAS 100kW
MAIN ENGINE START	Starter Motor
GENERATOR START	Starter Motor
CHARGERS	6 x Mastervolt 24/75C
CONVERTERS	2 x Stepdown Transformers
EMERGENCY	415V / 208V / 120V
HYDRAULICS	Heila Crane HPU
WATER MAKER	Watermakers Inc - 10 GPM
WATER SYSTEM	2 x Headhunter Pumps
SEWAGE SUSTEM	Hamman Super Mini Plus
FUEL SEPARATOR	GEA Westfalia

7. **NAVIGATION EQUIPMENT**

MAGNETIC COMPASS	Ritchie
SATELLITE COMPASS	Garmin
AUTOMATIC PILOT	Alphatron Auto Pilot Alphatron DP System

RADAR	Furuno X-Band / Alphatron monitor Furuno S-Band / Alphatron monitor
CHART PLOTTER	Transis + Timezero
AIS	JRC
NAVTEX	JRC

8. **COMMUNICATION EQUIPMENT**

VHF	Sailor
------------	--------

9. **DECK EQUIPMENT**

ANCHORS	Bow and Stern Anchors
BOAT CRANE & DAVIT	Heila Crane Crane Max Weight 16 tons Deck Container Locking System
FUELLING SYSTEM	6,000 litres / 1,600 US gallons Petrol Fuelling Station (suitable for aviation or tender fuel)

10. **ENTERTAINMENT EQUIPMENT**

MASTER CABIN	Smart TV
VIP CABIN	Smart TV
CREW MESS	Smart TV
A/V SYSTEM	Crestron iPad Audio Visual System

11. **GALLEY & LAUNDRY EQUIPMENT**

- Full Service Galley
- 3 x Miele Washing Machines
- 3 x Miele Dryers

12. **SAFETY & SECURITY EQUIPMENT**

- Life Jackets
- Markus MOB Ladder
- Fire Fighting Equipment
- 2 x Petzel Harness Kits

13. **TENDERS & WATERSPORTS EQUIPMENT**

TENDERS	35ft RIB Centre Console
	16.5ft RIB Centre Console
WATERSPORTS	2 x Yamaha Waverunners
	Triton 3300/3 Submersible *Available for purchase under separate negotiation

14. **COMMENTS**

Launched in 2016 and built for adventure and comfort, AXIS is the ultimate 55m Damen Yacht Support vessel. Designed for the intrepid explorer, AXIS offers yacht owners unparalleled flexibility, with expansive deck space for helicopter operations, including a dedicated heli hangar, as well as the ability to carry tenders, submersibles, and an array of water toys. She features a robust steel hull and can accommodate 6+2 guests across 3 cabins. Benefiting from a shallow draft and an impressive 5,000nm range, she allows for extended cruising away from the mothership, enabling access to the most secluded and shallow waters. The exterior design features a distinct axe bow, ensuring maximum comfort and stability whilst underway.

KEY FEATURES

- Purpose-built by Damen Yachting for ultimate versatility and adventure
- Modified hull for shallow water cruising specifically in the Bahamas
- Expansive deck space supporting helicopter operations with a maximum take-off weight of 3,700kg
- Dedicated heli hangar
- Capacity to carry a Triton 3300/3 Submersible for deep-sea exploration
- Impressive range for long-distance cruising
- 6,000 litres/1,600 US gallons petrol fuelling station (suitable for aviation or tender fuel)
- Heila deck crane with max weight capacity of 16 tons
- Dynamic positioning

Disclaimer

Any yachts offered are subject to still being available. Their particulars are believed correct, but their contents are not guaranteed, neither may they be used for contractual purposes. All speeds, measurements, capacities, consumptions, etc., may be approximate or estimated. Specifications provided for information only. Data was obtained from sources believed to be reliable and is not guaranteed by Owner or Brokers. Buyer assumes the responsibility to ascertain the correctness of all data contained herein and otherwise provided and must instruct his agent and surveyors to confirm all details for accuracy

Yachtzoo - Monaco (Principal)
Fort Lauderdale Florida
33016 United States

Paul Madden
M: +1 (561) 568-3430
paul@yacht-zoo.com
www.yacht-zoo.com

Axis

Pic 1



Pic 2 (3)



Pic 3 (2)



Pic 4



Yachtzoo - Monaco (Principal)
Fort Lauderdale Florida
33016 United States

Paul Madden
M: +1 (561) 568-3430
paul@yacht-zoo.com
www.yacht-zoo.com

Axis

Pic 5



Pic 6



pic 7



pic 8



Yachtzoo - Monaco (Principal)
Fort Lauderdale Florida
33016 United States

Paul Madden
M: +1 (561) 568-3430
paul@yacht-zoo.com
www.yacht-zoo.com

Axis

pic 9



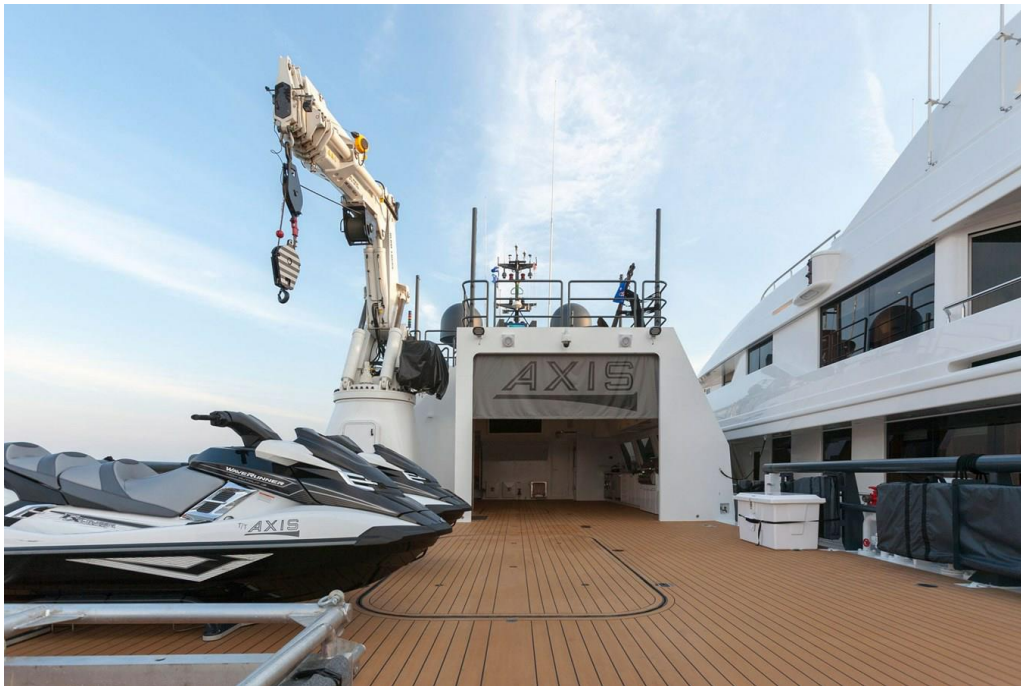
pic 10



Pic 11



Pic 13



Pic 12



Pic 14



Pic 15



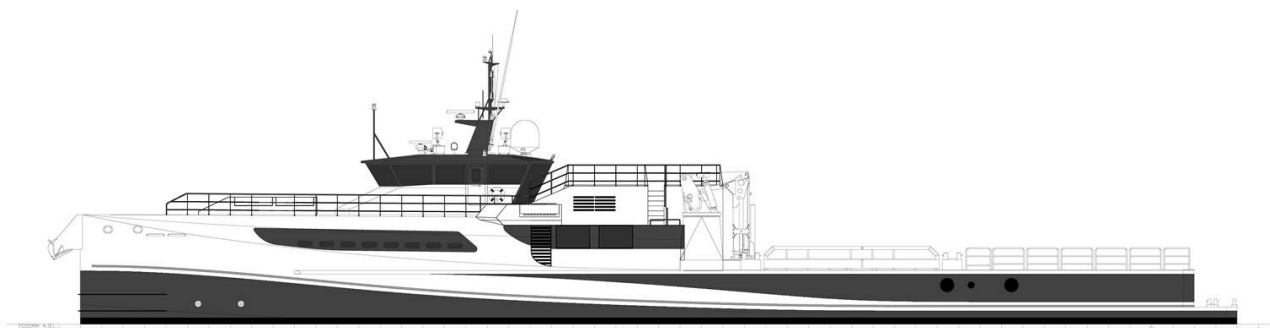
Pic 16



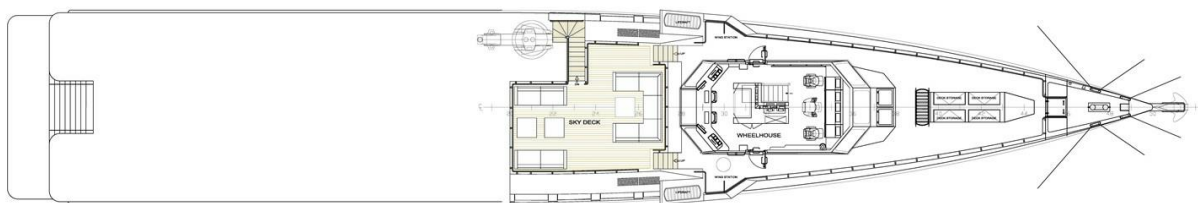
Pic 18



GA1

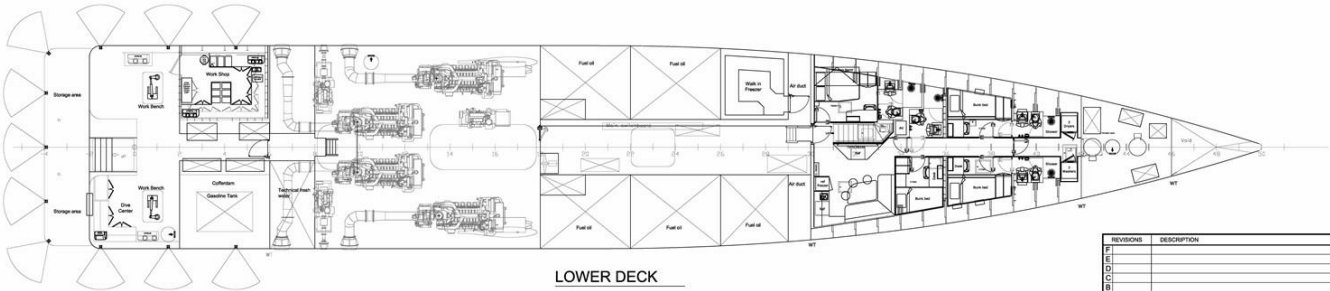
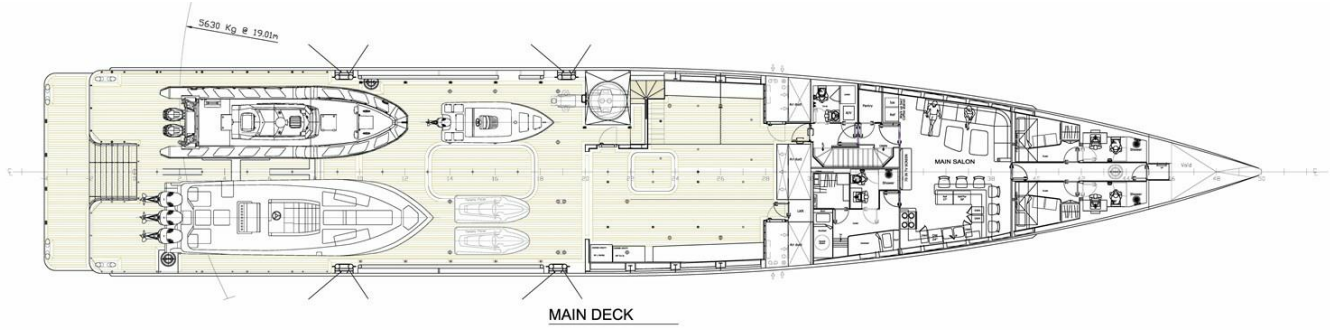


PORT PROFILE



BRIDGE DECK

GA2



REVISIONS	DESCRIPTION	BY
E		
D		
C		
B		
A		
D 10/2017	ORIGINAL BLDG	