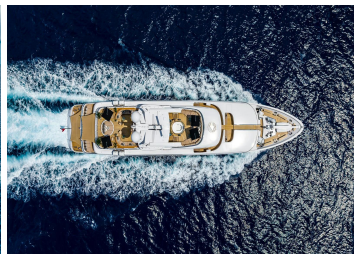


SEALION



2009 VSY

LOA: 203' 6" (62m)
Beam: 36' 3" (11.02m)
Max Draft: 10' 6" (3.2m)
Tonnage: 1,056.00
Speed: 15 Knots
 17 Knots
Flag: Marshal Islands
Location: Palm Beach, Florida
 United States
VAT Paid:
Price: \$55,000,000 USD

Delivery/Model 2009
Year:
Model: 62M
Builder: VSY
Type: Motor Yacht
Staterooms: 6
Fuel Cap: 41739 Gal
Water Cap: 10303 Gal
Engines: 2x, Caterpillar, 3516B DITA,
 2682 HP

Additional Specifications For SEALION:

LOA:	203' 6" (62m)	Delivery/Model	2009
Beam:	36' 3" (11.02m)	Year:	
Min Draft:	10' 6" (3.2m)	Year Built:	2009
Max Draft:	10' 6" (3.2m)	Refit Year:	2023
Hull Material:	Steel	Builder:	VSY
Tonnage:	1,056.00	Model:	62M
Range At Cruise	4000	Type:	Motor Yacht
Speed:		Engines:	2682 HP, Twin, 2004, Inboard, Diesel, Caterpillar, 3516B DITA,
Range At Max		Staterooms:	6
Speed:		Sleeps:	12
Speed:	Cruising 15 Knots	Heads:	8
	Max 17 Knots	Crew Quarters:	7
Int Designer:	Candy & Candy	Captain Cabin:	Yes
Ext Designer:	Espen Øino	Classifications:	LY3 RINA
Fuel Capacity:	41739 Gal	MCA:	Yes
Water Capacity:	10303 Gal	ISM:	Yes
Flag:	Marshal Islands		
Location:	Palm Beach, Florida United States		
Price:	\$55,000,000 USD		

2023 REFURB/UPDATES

- Full exterior paint and bottom service
- New bridge electronics and controls
- New AV/IT
- All new electrical wiring throughout the yacht
- Full rebuild on both main engines
- New engine controls
- New A/C handlers and compressors
- New galley equipment
- New headliners
- Exhaust repairs
- All new power management system
- Complete rebuild of (3) primary generators including electrical
- New teak on all decks

ABOUT

Builder: VSY

Year: 2009

Length: 203.4 ft / 62 m

Beam: 36.1 ft / 11.02 m

Max Draft: 10.5 ft / 3.2 m

Hull Material: Steel

Tonnage: 1,056

Interior Designer: Candy & Candy

Exterior Designer: Espen Øino

Classifications: RINA, LY3

Staterooms: 6, sleeps 12 guests

Heads: 8

Crew Cabins: 7, sleeps 14 crew

Crew Heads: 7

Engines: (2) Caterpillar 3516B DITA 2,682 hp 2004

Max Speed: 17 knots

Cruising Speed: 15 knots

Range at Cruise: 4,000 nm

Fuel Capacity: 41,739 gallons/11,027 liters

Water Capacity: 10,303 gallons/2,722 liters

Main Generators: (3) Caterpillar C9 with HUG Catalyzer converter 175 kW each (max & continuous power)

Emergency Generator: (1) Caterpillar 3056 86 kW (max & continuous power)

MAIN SALON

The main salon is a sophisticated and formal area where dark and light combine; the key elements of Macassar ebony, black lacquer, black jet beading and dark stained oak flooring being contrasted by an off-white deck head, a silvery-white, long-piled art silk carpet and upholstery in shades of taupe and metallic silver. All this is moderated by the warm tones of the leather wall paneling. Almond gold plates the many fittings a dividing strips, while Perspex is particularly noticeable on the Schimmel Grand Piano that stands by the aft deck doors.

DINING ROOM

Beyond black lacquered divides which separate the main salon from the dining room, is the elegant Macassar ebony-topped table, seating 12 guests. Art takes various forms from the bronze sculptures by American artist Frédéric Barnley to the "sea anemone" chandelier above the table and the intriguing "whirlpool whirls" mural by Based Upon that decorates the forward bulkhead.

Forward of the main salon is a photo-art lined passage, exotically floored in luxurious black and gold Nero Portoro marble, which leads to the VIP cabin and the owner's suite. Also, along this passage is a well-equipped

gymnasium that has a laminated glass wall, inlaid with silk thread to provide privacy for those inside while flooding the passage with light.

OWNER'S STATEROOM

The deck levels in the forward section of the yacht are raised by half a floor, providing extraordinary views. The owner bedroom enjoys an enviable 180-degree panorama through reflection-less vertical windows. Aft of the bed on the port side is the magnificent bathroom with separate shower and bath, tastefully decorated in grey-veined Grigio Carnico marble. A door leads onward from the bathroom into an elegant dressing room. The wardrobes are beautifully fitted to the highest standards, while a full-length mirror hides a video camera that, on command, replays a picture of one's back view on a digital screen hidden behind the mirror. While there is no office in the owner suite itself, a fully equipped study is located on the upper deck, just aft of the bridge.

VIP CABIN

The VIP is magnificent, incorporating the richest elements of the yacht's decorative palette, and provided with every possible amenity, from walk-in wardrobe to dressing table, extensive show locker and an exquisite marble-trimmed ensuite bathroom.

GUEST CABINS

Four further guest cabins found on the lower deck are all decorated to the same standard as the VIP but with slight chromatic twists. Two are doubles, while the two twins are easily converted into doubles by folding the central side table into the wall, sliding the beds together and unfolding a replacement side table from the wall.

UPPER DECK

The aft area of the upper deck offers a formal outside dining area which features a round table with an elegant carbon-fiber top and provides seating for 12 guests. Sheltered from the elements, this is the perfect dinner party setting with its elegant seating along the aft rail for pre-dinner cocktails. The stylish interior of the adjacent deck salon with its vast U-shaped sofa facing a large television screen is ideal for post-dinner entertainment.

LOBBY & LIFT

The lobby is distinctive for its grey buffalo hide floor and hare wood paneling. Additionally, the glass lift shaft picks up the theme of industrial-chic, with its visible intricate workings and the stainless steel-edged glass windows on each floor that allow light to flood in from the sun deck. Hi-tech motion sensors on each landing automatically grey-out the glass to preserve the modesty of guests walking above on the upper decks.

SUN DECK

The sun deck is an incredibly vast space that extends to nearly 50% of the yacht's entire length. The forward part of the deck offers a spa pool and sunbathing mattresses protected by a low glass windbreak. The bar is centrally positioned beneath the arch mast to maintain a sense of unity between the forward and aft portions of the deck. Wide passages either side of the bar can be closed off with glass doors to reduce a strong through-breeze. Opposite the bar is a dining table to sit 12 people, luxuriously topped with an exotic Baobab marble veneer with retractable awning. The dining table can also be lowered to serve as a coffee table or sunbed. A service lift linking this deck with the main deck galley ensures excellent service. Towards the aft is the revolving circular sun bed, and at the press of a button, sun worshippers can be swathed in a cooling water mist.

BATHING PLATFORM & GARAGE

The aft portion of the main deck is linked to the bathing platform by a pair of stairways that are only accessible when the platform is hinged down from the otherwise closed transom. A door leads forward from the platform, past a convenient head and shower, to give access to the two tender bays. The one on the starboard side carries two jet-skis launched through a shell door that hinges down to create a boarding platform and a handy place to prepare the diving gear that is also stowed in the compartment. To the port side is a larger garage in which the yacht's main tender is stowed.

PERFORMANCE

- Stability assured by NAIAN/VOSPERS VT 820 zero speed stabilizers
- Bow thruster: Brunvoll FU-37-LRC-1000 240 kW
- Stern thruster: Schottel pump jet SP J57 RD 230 kW - 360°

- SEALION complies with the RINA Green Star notation

COMMUNICATION

- GMDAA area 3
- Wireless and Lan network
- VSAT broadband at sea

AUDIO VISUAL EQUIPMENT & DECK FACILITIES

SEALION is equipped with a fully integrated Creston and Kaleidoscope system in all main guest and owner areas including:

- Audio/video system
- CCTV interface
- Light and cabin control system
- Audio/Video on demand server
- LCD touch screen controls
- Flat TV screens, light control
- Curtain control

WELLNESS

- Circular sun bed with integrated mists
- Oversized 12-person Jacuzzi on sky deck
- Well equipped gymnasium including: power plate My 5, Techno gym Kinesis (resistance training machine), Techno gym run 900 (running machine), Techno gym wave cardio (side stepper), a range of 10 hand weights, 3 medicine balls, boxing gloves, matching pads, etc.

SAFETY & FIRE PROTECTION SECURITY

- CCTV system: Panasonic with recording system
- Cameras: Panasonic
- Monitors: Panasonic

FIRE FIGHTING EQUIPMENT

- Fire control system: High fog
- Fire extinguishers: Throughout vessel and foam for engine room and galley

SAFETY EQUIPMENT

- Life rafts: (4) Zodiac 20+ persons and (1) 8-man
- Life rings
- EPIRBS: 406 GPIRBS, (2) Jotrun
- Flares: Offshore kit
- Medical equipment: Offshore Commercial CAT 1 Yacht LE West/Med Air

TENDERS & TOYS

- (1) Castoldi Jet 23 tender with 315 hp
- (1) 2014 Zodiac Milpro with Yamaha 25 hp outboard
- (2) Yamaha GP 1300 jet skis
- (4) Sea bobs
- (4) Wake boards
- Water skis, kneeboard, snorkeling gear, banana, donut, aquaglide couch and other towables

Disclaimer

Any yachts offered are subject to still being available. Their particulars are believed correct, but their contents are not guaranteed, neither may they be used for contractual purposes. All speeds, measurements, capacities, consumptions, etc., may be approximate or estimated. Specifications provided for information only. Data was obtained from sources believed to be reliable and is not guaranteed by Owner or Brokers. Buyer assumes the responsibility to ascertain the correctness of all data contained herein and otherwise provided and must instruct his agent and surveyors to confirm all details for accuracy prior to purchase. Subject to prior sale, price and inventory change, or withdrawal from market without notice.

Yachtzoo - Monaco (Principal)
Fort Lauderdale Florida
33016 United States

Paul Madden
M: +1 (561) 568-3430
paul@yacht-zoo.com
www.yacht-zoo.com

SEALION



Yachtzoo - Monaco (Principal)
Fort Lauderdale Florida
33016 United States

Paul Madden
M: +1 (561) 568-3430
paul@yacht-zoo.com
www.yacht-zoo.com

SEALION



Yachtzoo - Monaco (Principal)
Fort Lauderdale Florida
33016 United States

Paul Madden
M: +1 (561) 568-3430
paul@yacht-zoo.com
www.yacht-zoo.com

SEALION



Yachtzoo - Monaco (Principal)
Fort Lauderdale Florida
33016 United States

Paul Madden
M: +1 (561) 568-3430
paul@yacht-zoo.com
www.yacht-zoo.com

SEALION



Yachtzoo - Monaco (Principal)
Fort Lauderdale Florida
33016 United States

Paul Madden
M: +1 (561) 568-3430
paul@yacht-zoo.com
www.yacht-zoo.com

SEALION



Yachtzoo - Monaco (Principal)
Fort Lauderdale Florida
33016 United States

Paul Madden
M: +1 (561) 568-3430
paul@yacht-zoo.com
www.yacht-zoo.com

SEALION



Yachtzoo - Monaco (Principal)
Fort Lauderdale Florida
33016 United States

Paul Madden
M: +1 (561) 568-3430
paul@yacht-zoo.com
www.yacht-zoo.com

SEALION



Yachtzoo - Monaco (Principal)
Fort Lauderdale Florida
33016 United States

Paul Madden
M: +1 (561) 568-3430
paul@yacht-zoo.com
www.yacht-zoo.com

SEALION



Yachtzoo - Monaco (Principal)
Fort Lauderdale Florida
33016 United States

Paul Madden
M: +1 (561) 568-3430
paul@yacht-zoo.com
www.yacht-zoo.com

SEALION



Yachtzoo - Monaco (Principal)
Fort Lauderdale Florida
33016 United States

Paul Madden
M: +1 (561) 568-3430
paul@yacht-zoo.com
www.yacht-zoo.com

SEALION



Yachtzoo - Monaco (Principal)
Fort Lauderdale Florida
33016 United States

Paul Madden
M: +1 (561) 568-3430
paul@yacht-zoo.com
www.yacht-zoo.com

SEALION



Yachtzoo - Monaco (Principal)
Fort Lauderdale Florida
33016 United States

Paul Madden
M: +1 (561) 568-3430
paul@yacht-zoo.com
www.yacht-zoo.com

SEALION



Yachtzoo - Monaco (Principal)
Fort Lauderdale Florida
33016 United States

Paul Madden
M: +1 (561) 568-3430
paul@yacht-zoo.com
www.yacht-zoo.com

SEALION



Yachtzoo - Monaco (Principal)
Fort Lauderdale Florida
33016 United States

Paul Madden
M: +1 (561) 568-3430
paul@yacht-zoo.com
www.yacht-zoo.com

SEALION



Yachtzoo - Monaco (Principal)
Fort Lauderdale Florida
33016 United States

Paul Madden
M: +1 (561) 568-3430
paul@yacht-zoo.com
www.yacht-zoo.com

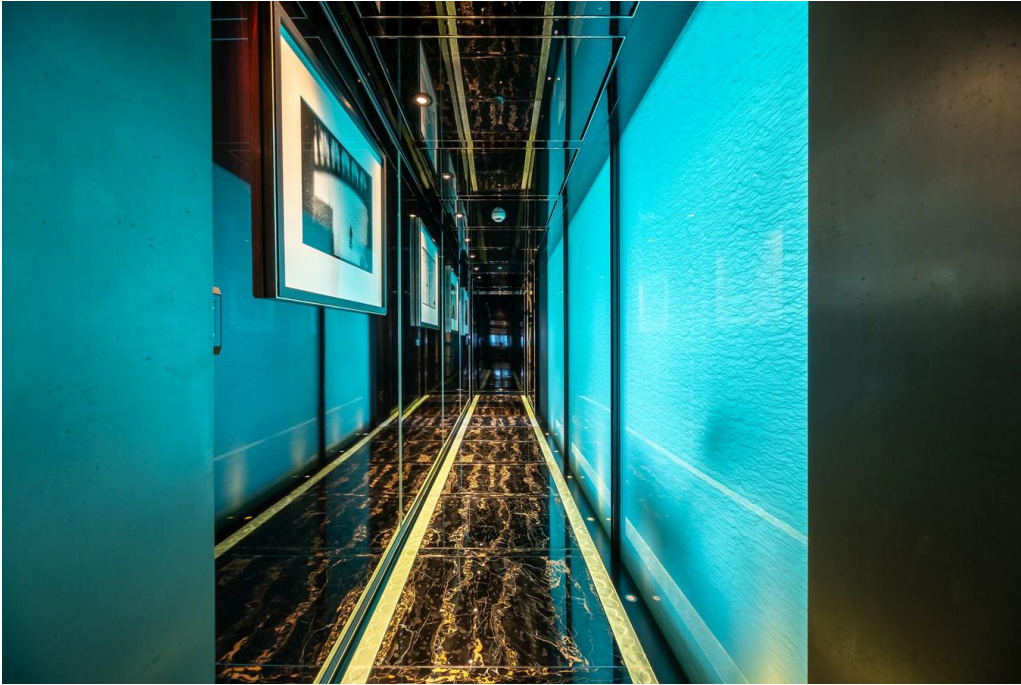
SEALION



Yachtzoo - Monaco (Principal)
Fort Lauderdale Florida
33016 United States

Paul Madden
M: +1 (561) 568-3430
paul@yacht-zoo.com
www.yacht-zoo.com

SEALION



Yachtzoo - Monaco (Principal)
Fort Lauderdale Florida
33016 United States

Paul Madden
M: +1 (561) 568-3430
paul@yacht-zoo.com
www.yacht-zoo.com

SEALION



Yachtzoo - Monaco (Principal)
Fort Lauderdale Florida
33016 United States

Paul Madden
M: +1 (561) 568-3430
paul@yacht-zoo.com
www.yacht-zoo.com

SEALION



Yachtzoo - Monaco (Principal)
Fort Lauderdale Florida
33016 United States

Paul Madden
M: +1 (561) 568-3430
paul@yacht-zoo.com
www.yacht-zoo.com

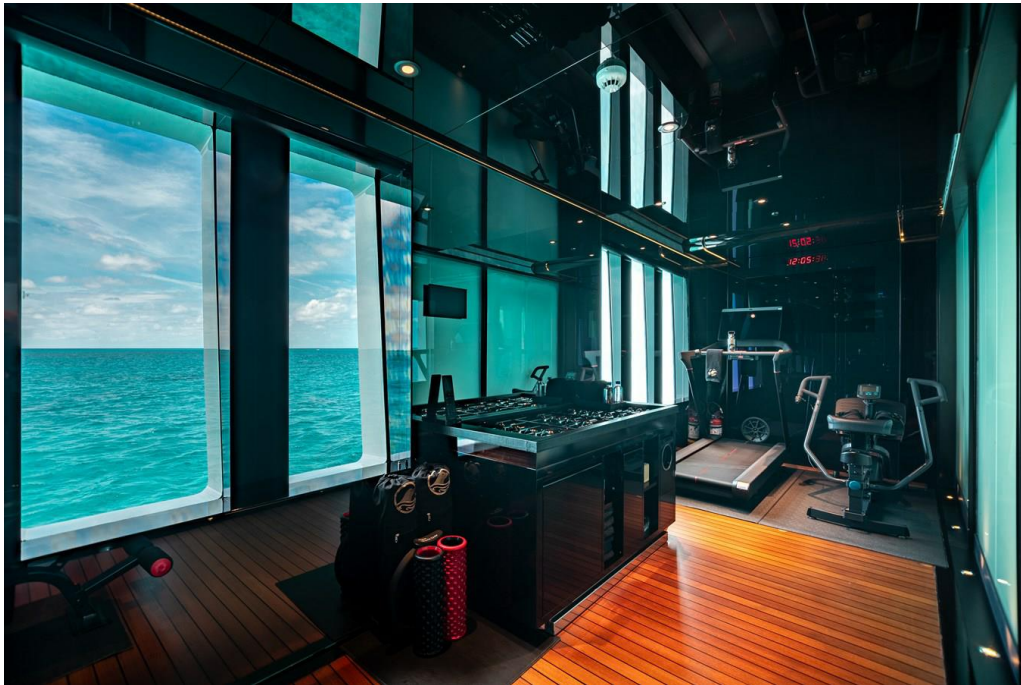
SEALION



Yachtzoo - Monaco (Principal)
Fort Lauderdale Florida
33016 United States

Paul Madden
M: +1 (561) 568-3430
paul@yacht-zoo.com
www.yacht-zoo.com

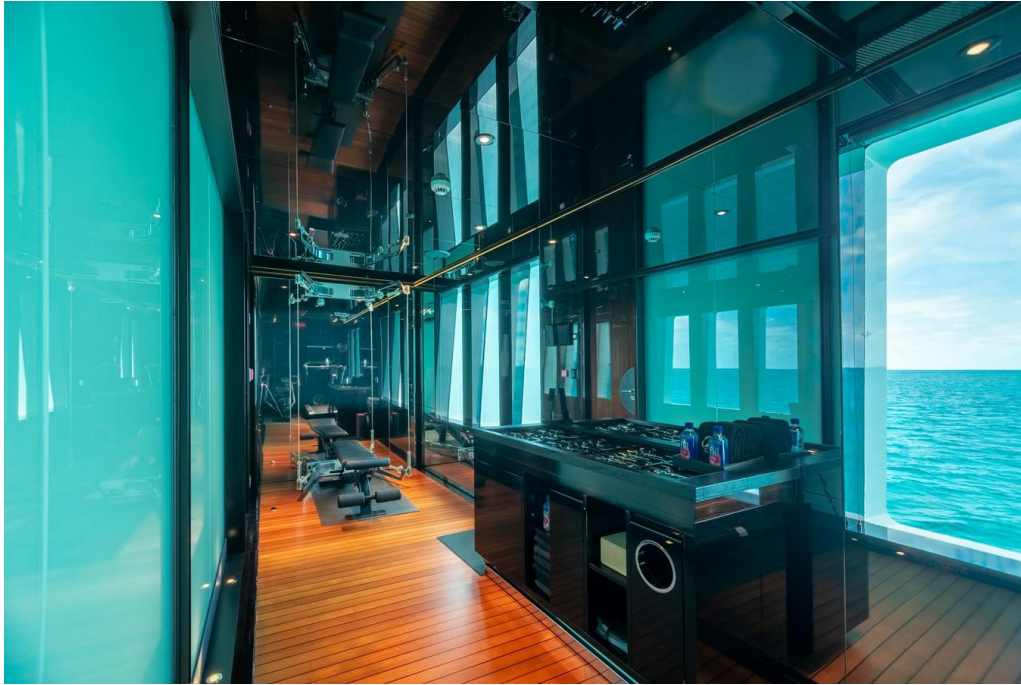
SEALION



Yachtzoo - Monaco (Principal)
Fort Lauderdale Florida
33016 United States

Paul Madden
M: +1 (561) 568-3430
paul@yacht-zoo.com
www.yacht-zoo.com

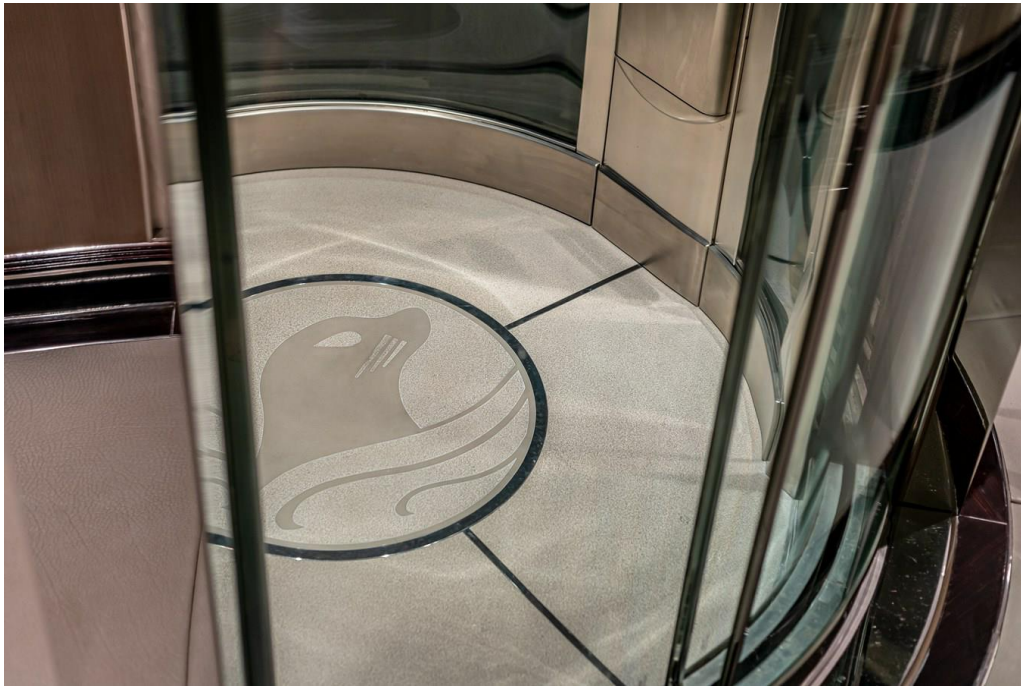
SEALION



Yachtzoo - Monaco (Principal)
Fort Lauderdale Florida
33016 United States

Paul Madden
M: +1 (561) 568-3430
paul@yacht-zoo.com
www.yacht-zoo.com

SEALION



Yachtzoo - Monaco (Principal)
Fort Lauderdale Florida
33016 United States

Paul Madden
M: +1 (561) 568-3430
paul@yacht-zoo.com
www.yacht-zoo.com

SEALION



Yachtzoo - Monaco (Principal)
Fort Lauderdale Florida
33016 United States

Paul Madden
M: +1 (561) 568-3430
paul@yacht-zoo.com
www.yacht-zoo.com

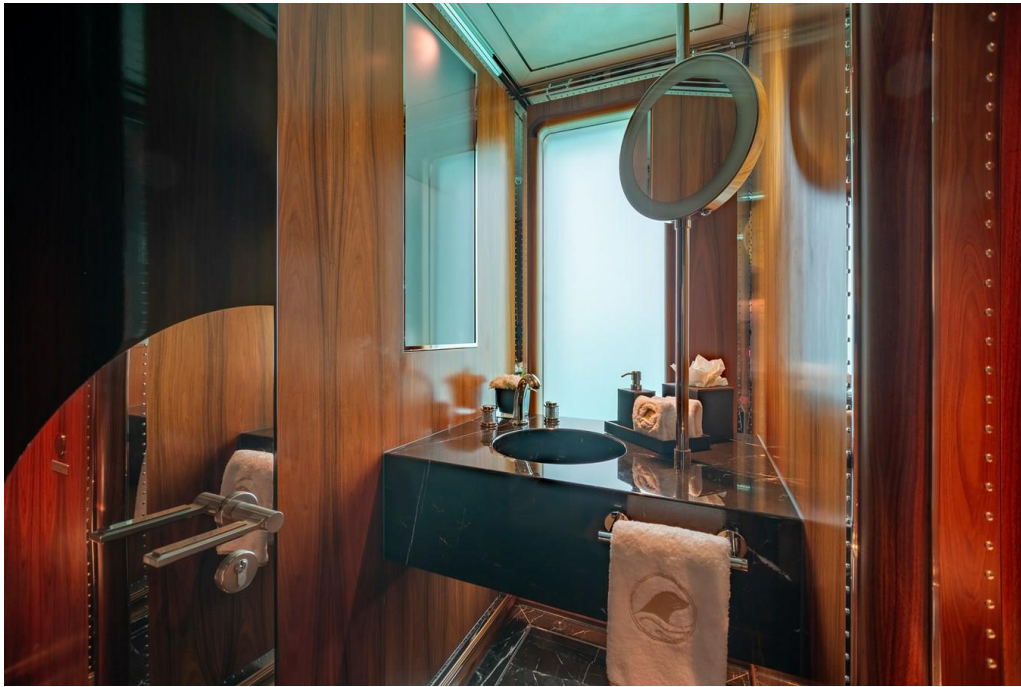
SEALION



Yachtzoo - Monaco (Principal)
Fort Lauderdale Florida
33016 United States

Paul Madden
M: +1 (561) 568-3430
paul@yacht-zoo.com
www.yacht-zoo.com

SEALION



Yachtzoo - Monaco (Principal)
Fort Lauderdale Florida
33016 United States

Paul Madden
M: +1 (561) 568-3430
paul@yacht-zoo.com
www.yacht-zoo.com

SEALION



Yachtzoo - Monaco (Principal)
Fort Lauderdale Florida
33016 United States

Paul Madden
M: +1 (561) 568-3430
paul@yacht-zoo.com
www.yacht-zoo.com

SEALION



Yachtzoo - Monaco (Principal)
Fort Lauderdale Florida
33016 United States

Paul Madden
M: +1 (561) 568-3430
paul@yacht-zoo.com
www.yacht-zoo.com

SEALION



Yachtzoo - Monaco (Principal)
Fort Lauderdale Florida
33016 United States

Paul Madden
M: +1 (561) 568-3430
paul@yacht-zoo.com
www.yacht-zoo.com

SEALION



Yachtzoo - Monaco (Principal)
Fort Lauderdale Florida
33016 United States

Paul Madden
M: +1 (561) 568-3430
paul@yacht-zoo.com
www.yacht-zoo.com

SEALION



Yachtzoo - Monaco (Principal)
Fort Lauderdale Florida
33016 United States

Paul Madden
M: +1 (561) 568-3430
paul@yacht-zoo.com
www.yacht-zoo.com

SEALION



Yachtzoo - Monaco (Principal)
Fort Lauderdale Florida
33016 United States

Paul Madden
M: +1 (561) 568-3430
paul@yacht-zoo.com
www.yacht-zoo.com

SEALION



Yachtzoo - Monaco (Principal)
Fort Lauderdale Florida
33016 United States

Paul Madden
M: +1 (561) 568-3430
paul@yacht-zoo.com
www.yacht-zoo.com

SEALION



Yachtzoo - Monaco (Principal)
Fort Lauderdale Florida
33016 United States

Paul Madden
M: +1 (561) 568-3430
paul@yacht-zoo.com
www.yacht-zoo.com

SEALION



Yachtzoo - Monaco (Principal)
Fort Lauderdale Florida
33016 United States

Paul Madden
M: +1 (561) 568-3430
paul@yacht-zoo.com
www.yacht-zoo.com

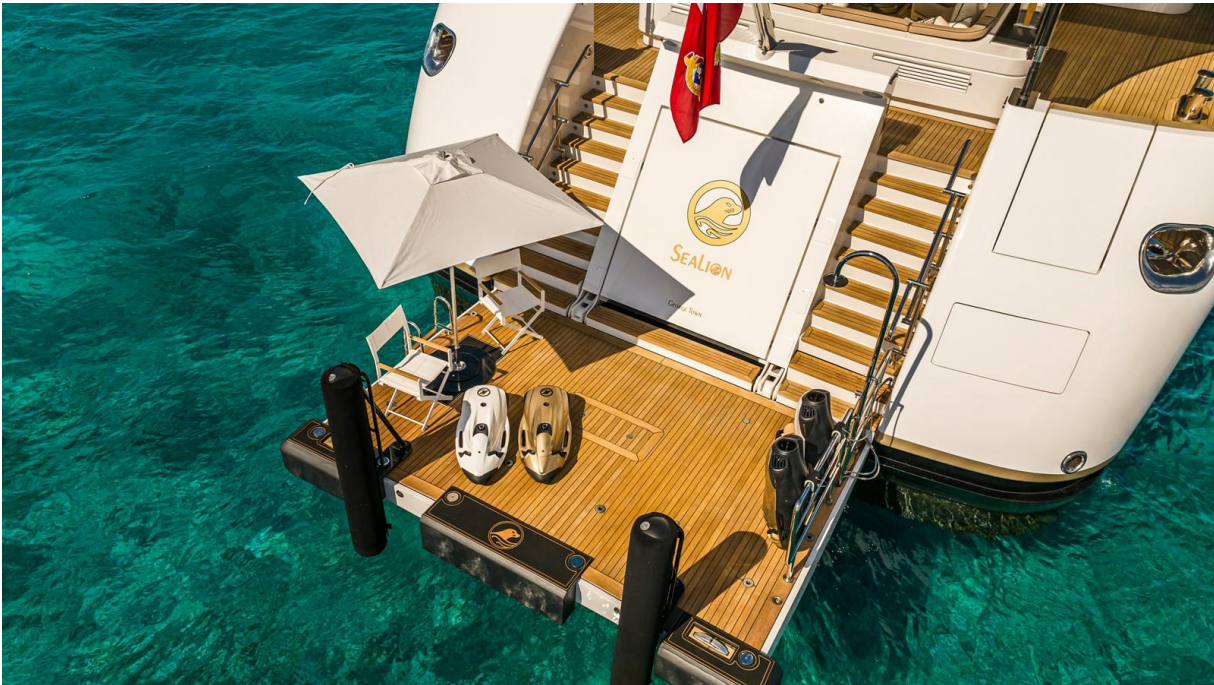
SEALION



Yachtzoo - Monaco (Principal)
Fort Lauderdale Florida
33016 United States

Paul Madden
M: +1 (561) 568-3430
paul@yacht-zoo.com
www.yacht-zoo.com

SEALION



Yachtzoo - Monaco (Principal)
Fort Lauderdale Florida
33016 United States

Paul Madden
M: +1 (561) 568-3430
paul@yacht-zoo.com
www.yacht-zoo.com

SEALION



Yachtzoo - Monaco (Principal)
Fort Lauderdale Florida
33016 United States

Paul Madden
M: +1 (561) 568-3430
paul@yacht-zoo.com
www.yacht-zoo.com

SEALION



Yachtzoo - Monaco (Principal)
Fort Lauderdale Florida
33016 United States

Paul Madden
M: +1 (561) 568-3430
paul@yacht-zoo.com
www.yacht-zoo.com

SEALION



Yachtzoo - Monaco (Principal)
Fort Lauderdale Florida
33016 United States

Paul Madden
M: +1 (561) 568-3430
paul@yacht-zoo.com
www.yacht-zoo.com

SEALION