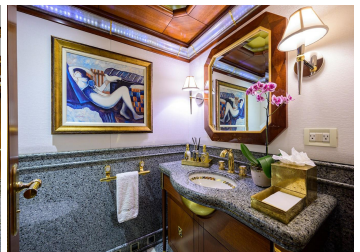


STARSHIP



2001 DELTA

LOA:	185' (56.39m)	Delivery/Model	2001
Beam:	30' 9" (9.37m)	Year:	
Max Draft:	8' 6" (2.56m)	Builder:	DELTA
Tonnage:	703.00	Type:	Motor Yacht
Speed:	12 Knots 14 Knots	Staterooms:	6
Flag:	Jamaica	Fuel Cap:	19000 Gal
Location:	Fort Lauderdale, Florida United States	Water Cap:	5340 Gal
VAT Paid:		Engines:	2x, Caterpillar, 3508, 1100 HP
Price:	\$16,950,000 USD		

Additional Specifications For STARSHIP:

LOA:	185' (56.39m)	Delivery/Model	2001
Beam:	30' 9" (9.37m)	Year:	
Max Draft:	8' 6" (2.56m)	Year Built:	2001
Hull Material:	Aluminum	Refit Year:	2021
Superstructure:	GRP	Builder:	DELTA
Hull Config:	Full Displacement	Type:	Motor Yacht
Tonnage:	703.00	Engines:	1100 HP, Twin, Inboard, Diesel, Caterpillar, 3508, 21550hrs / 21498hrs
Range At Cruise	4000	Staterooms:	6
Speed:		Sleeps:	12
Range At Max		Crew Quarters:	6
Speed:	Cruising 12 Knots	Captain Cabin:	Yes
	Max 14 Knots	Classifications:	RINA C class LY3 Unknown MCA Commerical
Int Designer:	Glade Johnson Design, Inc.	MCA: Yes	ISM:
Ext Designer:	Douglas Sharp Yacht Design		
Fuel Capacity:	19000 Gal		
Water Capacity:	5340 Gal		
Holding Tank:	1200 Gal		
Flag:	Jamaica		
Location:	Fort Lauderdale, Florida United States		
Price:	\$16,950,000 USD		

Overview

Owner will consider trade.

STARSHIP was built in 2001 as the 161' GALLANT LADY, extended to 185' in 2014 at Rybovich in Palm Beach and name changed from NEWVIDA to MY SEANNA. Her refit in 2020-2021 included the main engines top end being rebuilt, complete through hull valve replacement, over \$450,000 in paint and polishing and much more. Accommodations include 6 staterooms sleeping 12 guests as well as 6 crew cabins sleeping 11 including Captain's cabin. STARSHIP has an abundance of outdoor space available for lounging and socializing throughout her three decks. Her wide swim platform is perfect for accessing water sports and tenders. Powered by twin Caterpillar 3508 diesel engines and Caterpillar 165kW generators.

STARSHIP has enjoyed a rich history of cruising the Mediterranean, Caribbean, and Bahamas with private families and for charter. She is continually updated and upgraded and has just finished her 20-year class surveys in November 2022. Whether your preference is private family cruising or fitting in trips between charters, STARSHIP is ready for all your adventures.

Key Features

- Only three owners since new
- Six staterooms including a VIP on the top deck with 180-degree views
- Shallow draft for Bahamas cruising
- Proven charter history with schedule and name that convey to buyer
- Ten-person hot tub with marble counters and outside seating
- Large sauna forward of the hot tub on the sun deck
- 20-year class surveys completed November 2022
- Aluminum hull with fiberglass superstructure
- New 1200 gallon holding tank (Oct 2023)
- Helideck capable of holding an EC135 Airbus with a Gross Takeoff Weight (GTOW) of 6415 lbs

Hull and Structure

Her hull is of all welded aluminum construction using all marine grade aluminum. All the cutting, fitting, and weld work is done to very high standards. Her superstructure is fiberglass bolted to the aluminum deck via a fiberglass flange and secured with 3M 5200 marine adhesive. There is an aluminum structure up into the fiberglass in some areas. She is built on 41 frames with 41 being the transom, 0 being the forward watertight bulkhead, plus 7 frames to the bow. She has 8 main longitudinals plus the keelson.

She has carbon fiber in various high-stress areas. The fiberglass superstructure is bolted to a fiberglass flange, which is bolted to the aluminum deck and bonded with 5200. There are bolts on 4" centers in the flange to the fiberglass and on 8" centers in the fiberglass to the aluminum. All the fiberglass work is done to very high standards. She is well faired.

Measurements

- LOA 185' / 56 meters
- Beam 30' / 9 meters
- Draft 8'5" / 2.56 meters
- Air draft 57' / 17.37 meters

Walkthrough

Entering from the swim platform or passarelle there are port and starboard stairs leading up to the main deck

Yachtzoo - Monaco (Principal)
Fort Lauderdale Florida
33016 United States

Paul Madden
M: +1 (561) 568-3430
paul@yacht-zoo.com
www.yacht-zoo.com

STARSHIP

aft. The transom opens to reveal a beach club that contains a bathroom, full bar, and storage for water toys. Summit furniture with newly upholstered cushions in a Sunbrella, stunning outdoor performance fabric.

Up on the main deck aft there is a large seating area with U-shaped seating aft, two fixed tables, two overhead 42" television sets, and a large open area with movable seating that is often converted to a dance floor.

Forward to port are stairs leading up to the bridge deck. To centerline are double sliding doors to the main salon. Upon entering there is a bathroom to starboard and a stew pantry to port. A spiral staircase in the center aft leads down to four guest staterooms. Two king rooms to starboard and two twin rooms to port. Each of the twin rooms have two queen beds and the rooms are oversized.

Forward on the main deck to starboard is the main dining table for 12 guests, to port is the main salon with four lounge chairs and a couch. Forward center past the salon to port is another bathroom and to starboard leads forward to a stairway to port that leads up to the skylounge. Further forward to starboard is the entrance to the owner's suite which is full beam with oversized his and hers bathrooms forward and a Jacuzzi tub and shower all the way forward. On the port side of the owner's suite is a large desk and on the forward bulkhead is a large flatscreen television.

Back to the spiral staircase leading up to the skylounge there is a bathroom to port and the upper pantry just aft. Moving aft is the skylounge with full bar to starboard and oversized seating to port. Fully upholstered L-shape sectional with cozy chenille fabric and custom storage ottoman with tray top. The skylounge has exceptionally large windows and the aft bulkhead is glass sliding doors that lead to an outside bar and centerline dining table for twelve.

Forward the skylounge stairway are stairs leading up to the sixth stateroom. A queen size bed facing forward with 180-degree windows provides incredible views. Aft to starboard is the entrance to a large full-width bathroom that includes a shower, bidet, toilet, and his and her sinks.

Back on the aft skylounge deck to port are stairs leading up to the sundeck which has an enormous Jacuzzi for 10 guests plus barstool seating and marble bar tops on the perimeter. Chaise lounges are aft, and a full bar and grill are to starboard forward. All the way forward is a door with stairway leading up to a crow's nest for sunbathing or as a great observation area.

Interior Design Details

- Lower guest accommodations wood species uses a combination of light Anigre with accents of Mahogany and gold leaf
- Gold leaf coffer details throughout the staterooms
- New fresh Ivory Kravet wall panel fabrics
- Sferra-rich terry cloth linens in all heads
- Sferra Italian linens for crisp cool bedding
- New plush, velvet-to-the-touch carpet in staterooms and stairs
- Plumbing fixtures - classic gold detail by Serdanelli-Paris

Accommodations

Yachtzoo - Monaco (Principal)
Fort Lauderdale Florida
33016 United States

Paul Madden
M: +1 (561) 568-3430
paul@yacht-zoo.com
www.yacht-zoo.com

STARSHIP

Owner's Suite

Entering to port all the way forward on the main deck there are two Queen Anne chairs with table to starboard and a king-size bed facing forward with mahogany nightstands and gold table lamps. To port is a large desk in the shape of a half-moon with a new Edelman leather inlaid panel and on the forward bulkhead is a flatscreen television. There are very large windows with light-colored marble bases to port and starboard. On either side of the bed, you enter his and hers bathrooms. Hers is to starboard with a sink that has gold fixtures and a separate room with a toilet and bidet. Aft of the main changing area are closets and all the way aft is a Jacuzzi tub and full shower. Intricate stone patterned details on the floors incorporate Kashmir gold granite with outlines of Verde granite & Perlato Suevo marble. Kashmir gold granite in the tub, vanity tops & shower. Continuing around to port is his bathroom area with closets, a separate bathroom, bidet room, and a sink with gold fixtures. Plumbing fixtures have classic gold detail by Serdanelli Paris. Wood species throughout include Mahogany with gold leaf accents. Passage door hardware is gold with tiger's eye inserts by Serdanelli Paris. Wall panels are upholstered in a beautiful taupe Stroheim fabric.

Upper Deck VIP Stateroom

Just forward of the skylounge landing area is a private spiral staircase leading up to the first VIP stateroom where you land in the middle of the room and immediately notice the incredible 180-degree views forward. A small table is to port and a desk with chair is to starboard. Aft is a queen size bed with nightstands and sconces above each. A Crestron iPad system is docked for all entertainment needs. To starboard aft is a hanging closet and aft to port is a full-size bathroom with toilet, bidet, newly refit head with a Taj Mahal quartz walk-in shower, and his and hers sinks with marble counter and ample storage below. Plumbing fixtures are a classic gold/chrome detail by Serdanelli Paris. Wallcovering by Maya Romanoff.

Forward VIP Stateroom

Aft in the main salon and down the spiral staircase in the center to the landing you go all the way forward to the VIP 2 stateroom where you find a king-size bed, mahogany nightstands with gold lamps, and hanging closet. A crème plush Fabrica carpet brightens the room and a 32" Samsung flatscreen television is in the cabinet across from the bed. The bathroom is furthest forward in the room with a separate room for the toilet and bidet. The main bathroom has a large walk-in marble shower as well as his and hers sinks and plenty of storage.

Aft VIP Stateroom

Moving all the way aft in the lower landing you enter the 3rd VIP stateroom which is a mirror image of the Forward VIP.

Guest stateroom 4

Back to the landing and just to port is the fourth stateroom with twin queen beds with a nightstand in the center as this is a very large suite. A Crestron iPad entertainment system is on the nightstand and a 32" Samsung flatscreen television is across from this above a mahogany dresser. A hanging locker is next to this aft and further aft is the entrance to the bathroom which has marble floors and walls up to the chair rail. A separate room for the toilet and bidet and large walk-in marble shower are to one side with his and her sinks with gold fixtures across from this.

Guest stateroom 5

Forward in the landing to port is the 5th guest stateroom which mirrors stateroom 4.

Main Deck Entrance Foyer

The main deck entrance foyer is through a pair of double doors which are dogged and gasketed from the starboard side deck. The foyer is finished out with polished stone soles. In-boards are circular stairs up to the bridge and salon deck. Aft is a passageway to the dining salon. Forward is a door that gives access to the owner's stateroom. Inboard forward is a door to the athwartships crew companionway.

Main Salon and Dining Area

The dining and main salon is one common space. Starting forward to port is a sliding pocket door that gives access to the galley. Just aft is a door that leads into a day head. The day head is fitted with polished stone soles with custom built-in wood overheads. There is a wood vanity with a stone top and undermount sink, and a toilet.

To starboard in the main salon/dining salon area is a large oval-shaped varnished wood table with seating for 12. Outboard port and starboard are large, fixed windows. To port is cushioned furniture for the salon. Centerline aft is a set of curved carpeted overlay stairs leading down to the guest accommodations. Outboard port and starboard are built-in storage lockers. Starboard side aft is a day head. The day head has polished stone soles and built-in wood vanity with sink. There is a toilet provided. To port aft is a door into a stew pantry. The stew pantry has polished stone soles with vinyl overheads. There is an L-shaped Corian type countertop with built-in storage above and below.

Skylounge

The skylounge can be accessed via sliding doors aft from the bridge deck aft or forward to starboard from the bridge deck foyer. This space has polished stone soles and vinyl and wooden recessed overheads. Seen in the overheads are flush-mount lights, flush mount speakers, and two optical smoke detectors. Outboard port and starboard are large, fixed windows with shades. To starboard is a built-in bar with polished stone tops and undermount sink to port aft is a card table and two chairs. Below the bar is built-in storage and a Perlick drink refrigerator and Perlick bin type icemaker. To port is a large seating area with an L-shaped couch and two loose laid cushioned seats. There is a wooden and glass coffee table provided. Port and starboard side aft are built-in cabinets for storage.

Skylounge Deck Stew Pantry

The skylounge deck stew pantry is accessed to port forward from the skylounge. This space has polished stone soles and vinyl overheads. Seen in the overheads are flush mount lights and an optical smoke detector. There are built-in cabinets for storage with Corian-type countertops.

- Stainless steel undermount sink with KitchenAid garbage disposal
- Traulsen stainless steel refrigerator
- (2) Brewmatic coffeemakers
- Entertainment electronics cabinet
- AC magnetic breaker panel
- U-Line wine fridge
- Samsung CCTV display

Bridge Deck Foyer

The bridge deck foyer is accessed aft from the skylounge, forward through a set of double doors from the wheelhouse, or to port inboard via a set of carpeted overlay curved stairs leading up from the main deck foyer. Outboard to starboard are large, fixed windows. Inboard forward of the curved stairs is a door that gives access to the upper guest stateroom. Just aft of the stairs is a door into a day head. This day head is finished with polished stone soles and vinyl overheads. There is a toilet and vanity with a polished stone countertop with undermount sink provided.

Wheelhouse

The wheelhouse is accessible from the upper salon starboard side or stairs off the athwartships passageway forward of the galley. There is a large console forward surrounded by nine vertical windows. Five of the windows have washers and wipers. The windows are fitted with blinds. Port and starboard side are dogged and gasketed side deck doors. There is an approximate 230° visibility from the helm area. Mounted at the console are two Recaro pedestal mount helm chairs. Aft are two raised lounges with tables. Aft of the wheelhouse is a glass-enclosed navigation and communications office with desk and chair. Forward are the stairs down to the athwartships crew companionway.

Captain's Cabin

Aft to port of the communications office is the captain's cabin with oversized bunk and large window and a desk and chair. Aft is a marble head with a toilet, washbasin, and enclosed shower.

Crew Quarters

The crew rooms are located forward on the lower deck. There are (4) separate crew cabins each with (2) twin-size berths and a head with shower, toilet, and vanity. All the way forward is a curved stairwell with twin bunks on the starboard side and enclosed head and shower forward. Access to the anchor windlasses is via a removable panel in the shower on the starboard side and through the hanging closet on the port side. Starboard side aft of the crew cabins is a laundry room. Seen in the laundry room is a ThermalRite stainless steel freezer, a dual stainless steel refrigerator, (2) Miele washers and (2) Miele dryers.

Crew Mess

The crew mess is accessed aft through a dogged and gasketed door from the control room or to port via a set of curved carpet overlay stairs with stainless steel handrails leading down from the crew companionway. Outboard to port is a crew cabin. There is a U-shaped cushioned seating area with a table provided.

- LG television and Samsung monitor
- Hobart model #HM1500 microwave
- RH ship's monitoring display and Beisler display for alarms
- Frigidaire dishwasher
- Stainless-steel sub-zero refrigerator
- Crestron display
- MX Fire Repeater model #MK2
- Brewmatic coffee machine

Electronics

- Quantum Marine Zero Speed stabilizers ACR3001 MK2
- New PLC controllers and heat exchangers (full-service Nov 2022)
- 2 x Furuno VHF FM89005 with GMDSS
- 2 x Caterpillar digital engine displays
- Fusion stereo with Sirius XM satellite capability
- B&G HS 2000 speed/depth (new transducer Nov 2022)
- B&G anemometer
- B&G Hydra 2000 wind, speed & depth
- LH 5000 Furuno hailer (new 2021)
- Furuno AIS FA 170 (new 2021)
- Furuno depthsounder FCV 588 (new November 2022 - also new transducer)
- 3 x 24" Hatteland color monitors (new 2018)
- 120-mile Furuno X Band color radar
- 120-mile Furuno S Band color radar
- Timezero Nobeltec navigation suite on Asis computer
- Transis navigation suite on RS6B Marine computer
- Garmin 943 color GPS
- Furuno GNSS navigator GP170
- RH Marine alarm display systems monitor
- 2 x ACR searchlights
- Extron control module – monitor control switching
- Exalto windshield wiper control panel
- Non follow up steering
- Simrad AP70 MK II autopilot (new Nov 2022)
- Simrad FU 80 tiller control (new Nov 2022)
- Anschutz gyro compass
- Anschutz gyro repeater (new sphere Nov 2022)
- ZF Mathers controls main engine and backup control and wing stations (new Nov 2022)
- HRP Bow thruster variable 200-60
- Wesmar Stern thruster variable
- Net-Logic Watchkeeper bridge watch alarm

Radio Room

- Furuno GPS GP-150
- 13 x Axis cameras (new Nov 2022)
- Samsung 24" color monitor
- Tyco Minerva T2000 fire detection system
- Furuno Navtex NX-700 weather module
- Inmarsat C Felcom 18
- Dell Inspiron 5400 AIO 21" color computer
- RH Marine alarm system monitor
- JRC WRC 12 MF-HF SSB radio
- Panasonic VOIP phone system
- Sailor 900 VSAT with I Direct modem

Galley

- Garland 6-burner convection stove top
- Wells F-15 fryer
- 2 x Rational SCC WE61 convection ovens (stacked)
- 2 x Cospolich refrigeration (8 boxes)
- Amana commercial microwave
- Grohe spigot with stainless tub sink
- Meiko Point 2 Series dishwasher (3 minute)
- Meiko iClean UMT dishwasher (new Nov 2022)

Entertainment Equipment

Skylounge

- Crestron iPad
- Crestron keypad
- Samsung curved TV
- Xbox 360
- P8 Pack Edge
- Kaleidescape receiver
- Maritized AV receiver model #SR6008
- Eaton 5P 550 UPS
- QSCCX254 amplifier
- Magic Sing Karaoke and (2) microphones

Main Salon

- Crestron control for lights, shades, audio video, and temperature thermostat

Port And Starboard Forward And Aft Guest Staterooms

- Samsung TV
- Crestron iPad
- Oppo Blu-ray player model #BDP-103
- Recessed speakers
- Crestron keypad
- Panasonic phone

Owner's Stateroom

- Samsung TV
- Crestron iPad
- Crestron keypad
- Oppo Blu-ray player model #BDP-103
- Kaleidescape disc reader
- Kaleidescape player
- Marantz receiver model #SR6008
- Eaton 5P550 UPS
- Crestron MC3
- (2) Owner's head Crestron keypad controls
- (2) Panasonic phones

Galley

- Crestron keypad
- Samsung display and Windows computer
- Panasonic phone

Crew Mess

- LGTV
- Panasonic phone
- Crestron iPad
- Samsung TV with CCTV display

AV Equipment Room

- Netgear Prosafe model #GSM7212P
- Netgear Prosafe model #GSM7252PS
- (2) Crestron 3 Series CP3 control processors
- HD media distribution
- Crestron control processor
- OPPO Blu-ray BDP-130
- Kaleidescape disc reader
- Crestron tuner card rack
- Symetrix Radius AEC
- Symetrix model #SLN12
- Symetrix XOUT 12
- ADA PTM 1645
- QSC AMP CX254
- QSC AMP RNX850A
- (7) Crestron HD-MD8X2
- (13) DirecTV boxes
- Eaton 931
- Crestron keypad
- Oppo Blu-ray player model #BDP-103
- Kaleidescape disc reader
- Kaleidescape player
- Marantz receiver model #SR6008
- Eaton 5P550 UPS
- Crestron MC3
- (2) Owner's head Crestron keypad controls
- (2) Panasonic phones

Main Machinery

- Twin Caterpillar 3508 diesel engines, 1,100 hp at 1800 RPM (Full engine borescope - Nov 2022)
- All cross hatches present, approximately 3,000 hours since top ends rebuilt
- Engine hours: Port 21,550; Starboard 21,498 (August 2024)
- Main engine transmissions Reintjes WAF541 Ratio 3.955.1
- Propellers are Nibral 5 blade 52"
- Shafting is oil bath
- 3 x AC Dometic 900,000 BTU = 75 tons each 208VAC 60 hz 3 phase
- 2 x Snyder blowers
- MSD Headhunter Tidalwave TW-HMX-6004-A (serviced Dec 2022)
- 2 x Watermakers, Inc. model #WMSB 2500 3CDNY4 2,500-gallon per day reverse osmosis (serviced Oct 2022)
- Alfa Laval MIB303 fuel centrifuge (serviced Nov 2022)
- Quantum Zero Speed stabilizers QC1800 (serviced Sept 2022)
- Boiler seawater pumps (replaced 2021)
- Marine Air Systems model #MTSV900(001) SEH, chill water air conditioning plant rated at 900,000 Btu's, or 75 tons of cooling capacity

Electrical Equipment

- Twin Caterpillar 3306 turbo-charged 165kw 60-hz, three-phase, 220-volts AC, 541 amps, 1800 RPM generators
- Generator hours: Port 6,877; Starboard 6,912 since rebuild and electrical end rewind in November 2022
- Generator hours recorded in August 2024
- Atlas shore power frequency converter 408VAC to 200VAC
- Transformer Shore Power Classic III SB230
- 12 x AGM 8D batteries – 2 x each main engine (1.5 years old), 2 x each generator (new Oct 2022), 4 x house (new Oct 2022)
- 5 x Battery chargers: Wheelhouse = Mastervolt 24/100, Main Engine Port = Mastervolt 24/60, Main Engine Starboard = Mastervolt 24/60 Dolphin Pro, Generator Port = Mastervolt 24/25, Generator Starboard = Mastervolt 24/30

Tankage

- Fuel capacity is 19,000 US gallons
- Fresh water is 5,340 US gallons
- Black water is 648 US gallons
- Clean oil is 384 US gallons
- Dirty oil is 381 US gallons

Pumps

- Boss 107 Oil/water separator (serviced Oct 2022)
- 2 x Headhunter Tortuga black water pumps (serviced Nov 2022)
- 2 x Headhunter Tortuga grey water pumps (serviced Nov 2022)
- 2 x Goulds GT 303 freshwater system pumps (rebuilt Nov 2002)
- Envirovac EVAC 900 Toilets
- Galley refrigerator/freezer compressors are Aqua Air as are walk-in freezer, crew freezer, galley freezer, aft, middle, and forward (both seawater cooling pumps replaced June 2022)

Deck Equipment

- Recessed into the swim platform is an Opacmare Transformer (serviced Nov 2022)
- 2 x Aft deck Muir capstans VC11000 - port and starboard
- 2 x Anchor Danforth
- Nautical Structures SOLAS MCA EZ 2500 emergency rescue boat davit
- Nautical Structures electro-hydraulic passerelle
- 12-Person hot tub Jacuzzi
- Designated helicopter “touch and go” area
- UMT davit AC powered with an 800-lb lift capacity
- TV Projector
- Wet bar with stone countertops
- DCS propane barbecue
- Manitowoc bin type icemaker
- (2) Undercounter Perlick glass front refrigerators
- (2) Marinized speakers
- (2) Radar arrays
- (2) ACR remote searchlights
- (6) Fiberglass whip antennas
- (4) Large domes
- Hailing speakers
- (2) Sets of pneumatic horns
- (2) Stainless exhaust tips
- (2) Sets of floodlights forward and aft

Ground Tackle

There are (2) Steen windlasses type 23-2-50-1 with warping drums. They are powered with three-phase electric motors that are accessed in the forward crew cabin and have handheld remote pendants. The anchors are Pool HHP N-type and anchor chain is 7/8 (22mm) galvanized chain with 450 feet each side.

Tender Garage/Beach Club

The tender garage/beach club is entered port side forward down from the aft deck through a teak overlay dogged and gasketed hatch. There are teak overlay treads with stainless steel handrail provided. The tender garage is finished with teak overlay decking and solid painted panel overheads. The tender garage is protected via two rate-of-rise heat/smoke detectors and an explosive fume detector. The bilges are protected by a bilge high-level water alarm and can be pumped via the main bilge manifold. Forward are built-in cabinets for storage. There is a large Samsung television for entertainment. Aft of the tender garage is a hydraulically actuated transom door that gives access to the swim platform. Port side is a small wet bar area. Aft of the wet bar area is a head with toilet and vanity with sink. Port side below the steps is access into the steering gear compartment.

Starboard side is a door that gives access to the electrical room/technical space. There is a laminate counter on port and starboard sides of the room with a Miele washer and Miele dryer under counter in cabinets along the inboard wall. Seen in the technical space aft is crawl space access through an access hatch and ring frame into the stern thruster bilge compartment.

The following equipment is on the starboard side of the beach club:

- Atlas ShorePower “Classic III” Control panel
- Atlas Smart Box
- Atlas ShorePower converter
- Passarelle carrier overhead

- (2) Yaskawa A1000 frequency drives
- Opacmare control boxes
- Capstan motor mounted in overhead
- Capstan control box
- A/C switchboard panel for shore power
- Junction boxes for passerelle lighting and capstan
- Smoke detector
- Avalon water filter
- Co2 fire extinguisher

To port forward of the beach club is an access hatch to the steering pumps and emergency steering system. Seen in the emergency steering compartment is the following equipment:

- Steering pumps #1 and #2 – ABB 60 Hz 208V 10A
- Emergency steering wheel
- Whale gulper 220 suction for garage forward bilge and overboard discharge valve
- Aqua Air fan coil unit with control box
- Anschutz rudder angle indicator
- (2) Ulstein Tenfjord junction boxes for steering pumps #1 and #2
- Groeneveld piston pump and header tank reportedly for shaft oil bath system
- Various electrical junction boxes for steering equipment and lighting
- Ships air jack
- Fuel supply valve
- Panasonic phone/intercom system
- Futura lighting LCD drivers
- Gas detector

In the beach club forward in the cabinets to port is the following equipment:

- Nautical Structures control box for gantry crane
- (2) 12-volt batteries for gantry crane
- Crane remote control
- Fire hydrant, hose, and vari-nozzle
- Nautical Structures HPU and header tank

Aft of the beach club day head is an access cupboard to a technical space. In the technical space is the following equipment:

- Access to Nautical Structures junction box, transom door cylinder, and locking pins
- Hydraulic system manifold
- Access to swim platform shower plumbing
- Junction boxes for (7) underwater lights
- Accumulator tank
- Fan coil unit

Tenders and Toys

- 2019, 14-foot Zodiac model Pro 420 rescue boat
- (2) Yamaha VX Wave runner jet skis
- 4 x Sea Bobs
- Water slide
- 2 x Kayaks
- Fishing equipment
- Dive compressor
- Inflatable water toys
- 2 x Paddleboards
- Snorkeling equipment
- Scuba diving equipment

2020 Upgrades

- Main engines top end rebuilt
- Generators rebuild
- Complete through hull valve replacement
- Sea chest rebuild
- Stabilizer overhaul
- AC chiller plant rebuild
- Over \$450,000 in paint and polishing
- Teak deck repair and sanding
- New Bottom paint
- New Exterior cushions

Disclaimer

Any yachts offered are subject to still being available. Their particulars are believed correct, but their contents are not guaranteed, neither may they be used for contractual purposes. All speeds, measurements, capacities, consumptions, etc., may be approximate or estimated. Specifications provided for information only. Data was obtained from sources believed to be reliable and is not guaranteed by Owner or Brokers. Buyer assumes the responsibility to ascertain the correctness of all data contained herein and otherwise provided and must instruct his agent and surveyors to confirm all details for accuracy prior to purchase. Subject to prior sale, price and inventory change, or withdrawal from market without notice.

Main Deck Foyer



Main Salon



Dining Area



Day Head



Yachtzoo - Monaco (Principal)
Fort Lauderdale Florida
33016 United States

Paul Madden
M: +1 (561) 568-3430
paul@yacht-zoo.com
www.yacht-zoo.com

STARSHIP

Galley



Galley



Galley



Galley



Main Deck Starboard Foyer



Owner Stateroom



Owner Stateroom



Owner Stateroom



Owner Ensuite



Owner Ensuite



Owner Ensuite



VIP Stateroom (Upper Deck)



Yachtzoo - Monaco (Principal)
Fort Lauderdale Florida
33016 United States

Paul Madden
M: +1 (561) 568-3430
paul@yacht-zoo.com
www.yacht-zoo.com

STARSHIP

VIP Stateroom (Upper Deck)



VIP Ensuite



Guest Stateroom



Guest Stateroom



Guest Ensuite



VIP Stateroom 2



Yachtzoo - Monaco (Principal)
Fort Lauderdale Florida
33016 United States

Paul Madden
M: +1 (561) 568-3430
paul@yacht-zoo.com
www.yacht-zoo.com

STARSHIP

VIP Stateroom 2



VIP Ensuite



Guest Stateroom



Guest Stateroom



Guest Stateroom Ensuite



VIP Stateroom 3



VIP Stateroom 3



VIP Ensuite



Lower Deck Foyer



Pilothouse



Pilothouse



Helm



Pilothouse Office



Bridge Deck Day Head



Bridge Deck Foyer



Skylounge



Yachtzoo - Monaco (Principal)
Fort Lauderdale Florida
33016 United States

Paul Madden
M: +1 (561) 568-3430
paul@yacht-zoo.com
www.yacht-zoo.com

STARSHIP

Skylounge Bar



Skylounge



Yachtzoo - Monaco (Principal)
Fort Lauderdale Florida
33016 United States

Paul Madden
M: +1 (561) 568-3430
paul@yacht-zoo.com
www.yacht-zoo.com

STARSHIP

Bridge Deck Aft



Bridge Deck Aft



Bridge Deck



Bridge Deck Dining



Yachtzoo - Monaco (Principal)
Fort Lauderdale Florida
33016 United States

Paul Madden
M: +1 (561) 568-3430
paul@yacht-zoo.com
www.yacht-zoo.com

STARSHIP

Bridge Deck



Bridge Deck



Bridge Deck



Foredeck



Yachtzoo - Monaco (Principal)
Fort Lauderdale Florida
33016 United States

Paul Madden
M: +1 (561) 568-3430
paul@yacht-zoo.com
www.yacht-zoo.com

STARSHIP

Foredeck Toy Storage



Sun Deck



Yachtzoo - Monaco (Principal)
Fort Lauderdale Florida
33016 United States

Paul Madden
M: +1 (561) 568-3430
paul@yacht-zoo.com
www.yacht-zoo.com

STARSHIP

Sun Deck



Sun Deck



Yachtzoo - Monaco (Principal)
Fort Lauderdale Florida
33016 United States

Paul Madden
M: +1 (561) 568-3430
paul@yacht-zoo.com
www.yacht-zoo.com

STARSHIP

Sun Deck



Sun Deck



Yachtzoo - Monaco (Principal)
Fort Lauderdale Florida
33016 United States

Paul Madden
M: +1 (561) 568-3430
paul@yacht-zoo.com
www.yacht-zoo.com

STARSHIP

Sun Deck



Jacuzzi



Yachtzoo - Monaco (Principal)
Fort Lauderdale Florida
33016 United States

Paul Madden
M: +1 (561) 568-3430
paul@yacht-zoo.com
www.yacht-zoo.com

STARSHIP

Jacuzzi



Open Air Cinema



Yachtzoo - Monaco (Principal)
Fort Lauderdale Florida
33016 United States

Paul Madden
M: +1 (561) 568-3430
paul@yacht-zoo.com
www.yacht-zoo.com

STARSHIP

Crow's Nest



Crow's Nest



Crow's Nest



Side Deck



Yachtzoo - Monaco (Principal)
Fort Lauderdale Florida
33016 United States

Paul Madden
M: +1 (561) 568-3430
paul@yacht-zoo.com
www.yacht-zoo.com

STARSHIP

Main Deck Aft



Main Deck Aft



Swim Platform



Beach Club



Yachtzoo - Monaco (Principal)
Fort Lauderdale Florida
33016 United States

Paul Madden
M: +1 (561) 568-3430
paul@yacht-zoo.com
www.yacht-zoo.com

STARSHIP

Beach Club



Beach Club



Yachtzoo - Monaco (Principal)
Fort Lauderdale Florida
33016 United States

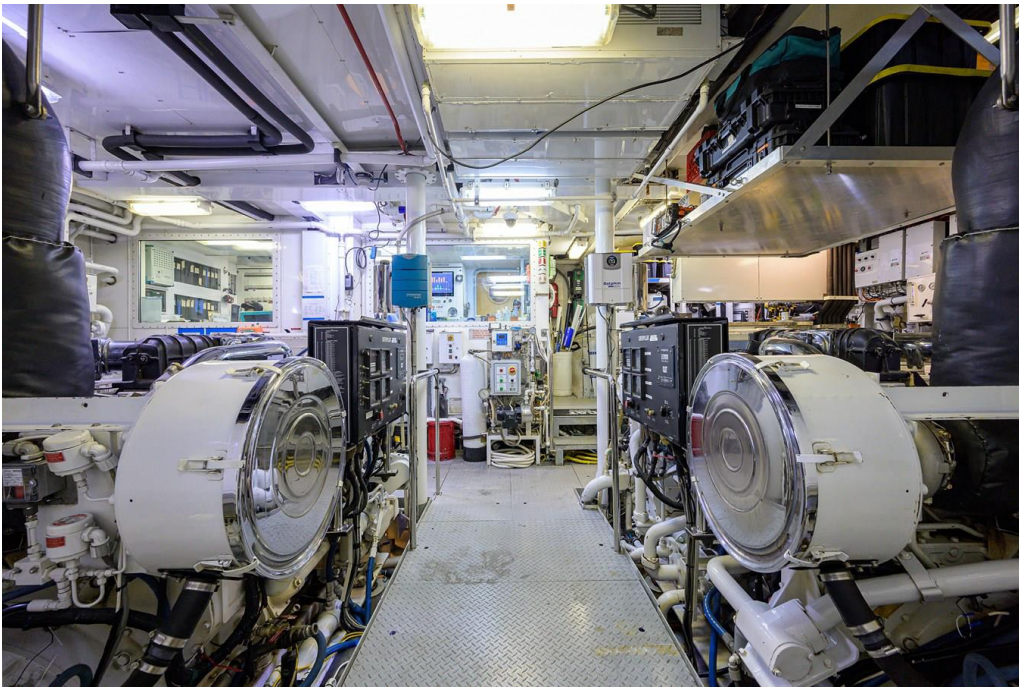
Paul Madden
M: +1 (561) 568-3430
paul@yacht-zoo.com
www.yacht-zoo.com

STARSHIP

Sauna



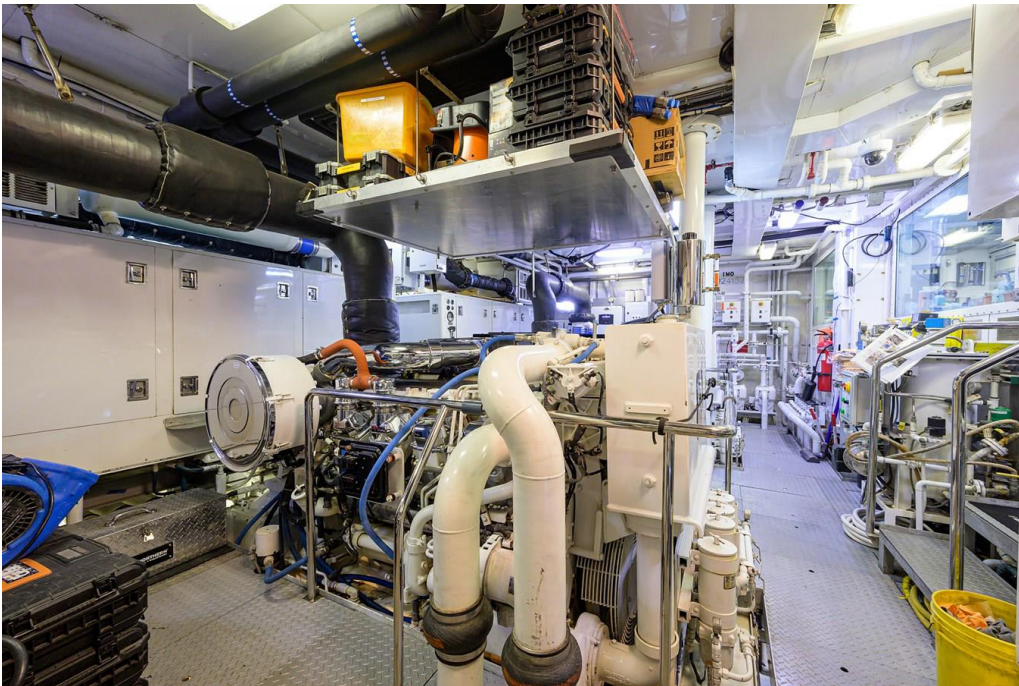
Engine Room



Engine Room



Engine Room



Yachtzoo - Monaco (Principal)
Fort Lauderdale Florida
33016 United States

Paul Madden
M: +1 (561) 568-3430
paul@yacht-zoo.com
www.yacht-zoo.com

STARSHIP

Engine Room



Crew Quarters



Starboard Profile



Starboard Profile



Yachtzoo - Monaco (Principal)
Fort Lauderdale Florida
33016 United States

Paul Madden
M: +1 (561) 568-3430
paul@yacht-zoo.com
www.yacht-zoo.com

STARSHIP

Stern



Yachtzoo - Monaco (Principal)
Fort Lauderdale Florida
33016 United States

Paul Madden
M: +1 (561) 568-3430
paul@yacht-zoo.com
www.yacht-zoo.com

STARSHIP



Yachtzoo - Monaco (Principal)
Fort Lauderdale Florida
33016 United States

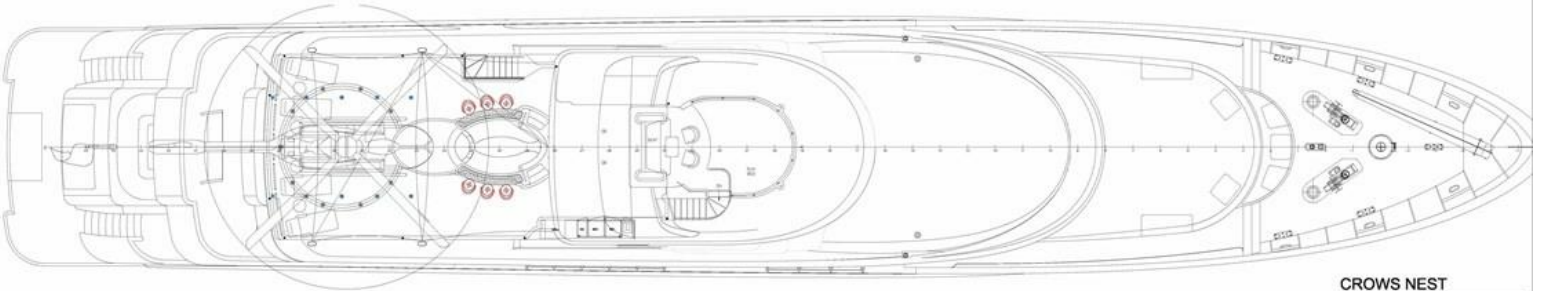
Paul Madden
M: +1 (561) 568-3430
paul@yacht-zoo.com
www.yacht-zoo.com

STARSHIP

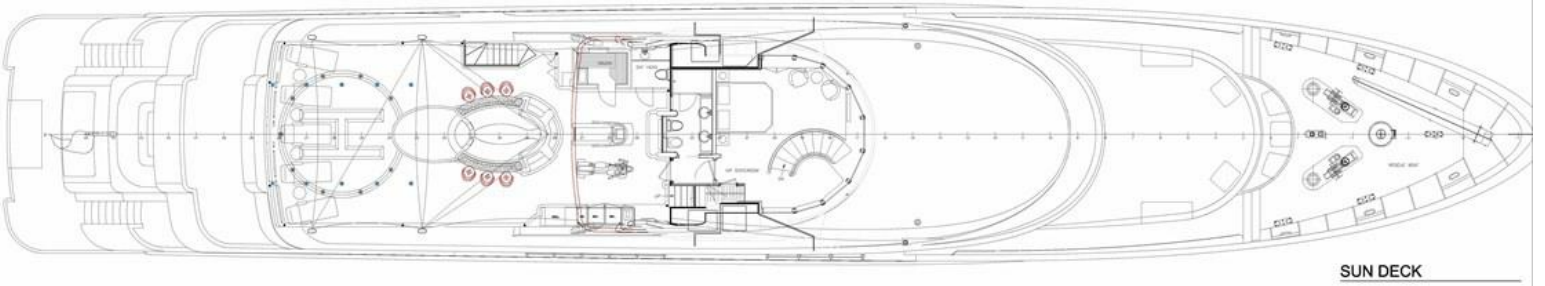
Layout



PROFILE - STBD



CROWS NEST



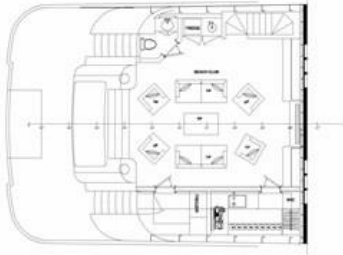
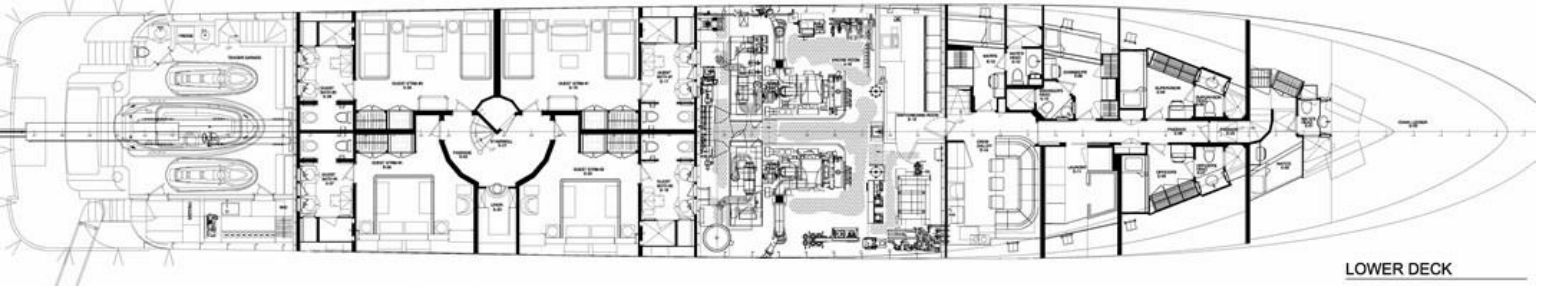
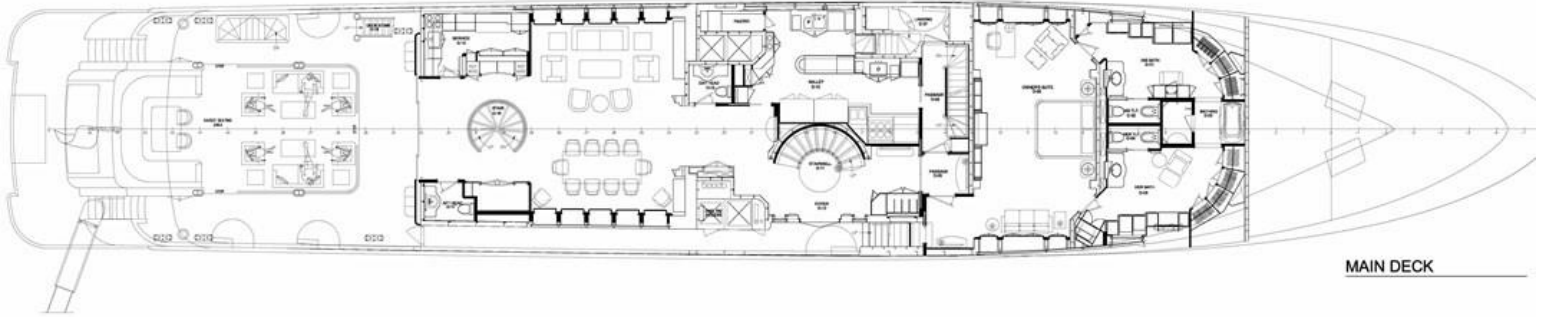
SUN DECK

Yachtzoo - Monaco (Principal)
Fort Lauderdale Florida
33016 United States

Paul Madden
M: +1 (561) 568-3430
paul@yacht-zoo.com
www.yacht-zoo.com

STARSHIP

Layout



Yachtzoo - Monaco (Principal)
Fort Lauderdale Florida
33016 United States

Paul Madden
M: +1 (561) 568-3430
paul@yacht-zoo.com
www.yacht-zoo.com

STARSHIP

Alternate Hull Color



Yachtzoo - Monaco (Principal)
Fort Lauderdale Florida
33016 United States

Paul Madden
M: +1 (561) 568-3430
paul@yacht-zoo.com
www.yacht-zoo.com

STARSHIP