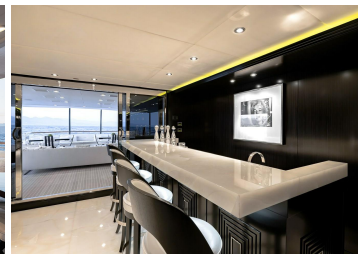
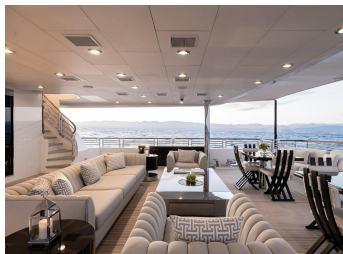


CARPE DIEM



2011 TRINITY

| | | | |
|-------------------|---|-----------------------------|----------------------------------|
| LOA: | 191' (58.22m) | Delivery/Model Year: | 2011 |
| Beam: | 33' 4" (10.16m) | Builder: | TRINITY |
| Max Draft: | 8' 6" (2.59m) | Type: | Motor Yacht Semi-Displacement |
| Tonnage: | 749.00 | Staterooms: | 6 |
| Speed: | 15 Knots 21 Knots | Fuel Cap: | 87774 L (23187.44 Gal) |
| Flag: | Cayman Islands | Water Cap: | 14006 L (3699.99 Gal) |
| Location: | Fort Lauderdale, Florida United States | Engines: | 2x, CAT, 3516B, 3384 HP |
| VAT Paid: | VAT Unpaid | | |
| Price: | \$32,500,000 USD | | |

Additional Specifications For CARPE DIEM:

| | | | |
|------------------------|---|-----------------------------|---|
| LOA: | 191' (58.22m) | Delivery/Model Year: | 2011 |
| Beam: | 33' 4" (10.16m) | Year Built: | 2011 |
| Max Draft: | 8' 6" (2.59m) | Refit Year: | 2024 |
| Hull Material: | Aluminum | Builder: | TRINITY |
| Superstructure: | Aluminum | Type: | Motor Yacht Semi-Displacement |
| Hull Config: | Semi-Displacement | Top: | Enclosed P.H. W/Sundeck |
| Hull Designer: | Trinity | Engines: | 3384 HP, Twin, Inboard, Diesel, CAT, 3516B, 500hrs / 500hrs |
| Deck Material: | Teak | Staterooms: | 6 |
| Tonnage: | 749.00 | Sleeps: | 12 |
| Range At Cruise | 2400 | Heads: | 7 |
| Speed: | | Crew Quarters: | 6 |
| Range At Max | 1586 | Crew Berths: | 11 |
| Speed: | Cruising 15 Knots | Captain Cabin: | Yes |
| | Max 21 Knots | Classifications: | American Bureau of Shipping AMS |
| Int Designer: | Carol Williamson and Associates | MCA: Yes | ISM: Yes |
| Ext Designer: | Trinity | | |
| Fuel Capacity: | 87774 L (23187.44 Gal) | | |
| Water Capacity: | 14006 L (3699.99 Gal) | | |
| Holding Tank: | 1605 L (424 Gal) | | |
| Flag: | Cayman Islands | | |
| Location: | Fort Lauderdale, Florida United States | | |
| Price: | \$32,500,000 USD | | |
| Tax Status: | VAT Unpaid | | |

Detailed Specification

MAIN CHARACTERISTICS

| | |
|--------------------------|---|
| Name | CARPE DIEM |
| Type | Motor Yacht |
| Builder | Trinity |
| Year | 2011 |
| Refit Year | 2024 |
| Hull No | T047 |
| LOA (M/FT) | 58.22m 191'00" |
| Beam (M/FT) | 10.16m 33'4" |
| Draft (Full Load) (M/FT) | 2.59 M 8'6" |
| Gross Tonnage | 749 GT |
| Hull Material | Aluminum |
| Hull Configuration | Semi-Displacement |
| Superstructure | Aluminum |
| Decks | Teak |
| Flag | Cayman Islands |
| Classification | ABS Maltese Cross A1 Commercial Yachting Service, AMS |
| MCA | Compliant |
| Naval Architect | Trinity |
| Exterior Designer | Trinity |
| Interior Designer | Carol Williamson and Associates |
| Main Engines | 2 x Caterpillar 3516B Series II HD 3,384 HP each |
| Speeds (Knots) | Max: 21 knots Cruising: 15 knots Economical: 13 knots |
| Range | 5,000 nm @ 10 knots |
| Guest Accommodation | 12 Guests in 6 Staterooms |
| Crew Accommodation | 12 Crew in 6 Cabins |

GENERAL DESCRIPTION

The epitome of cool, the sensational 6 stateroom CARPE DIEM (191ft) has arrived on the sales market for the first time. She showcases the owner's preference for juxtaposing dark woods, light carpets and neutral furnishings. Vintage fashion photography, Art Deco antiques, furniture and styling are recurring themes throughout the interior.

CARPE DIEM is unique in offering the flexibility of **3 full-width Master Suites**: the Owner's King Suite on the main deck forward, and below, the VIP King Suite Aft and the convertible VIP King Suite Forward.

Outdoors, the decks are spacious yet inviting with generous seating areas. Removable awnings are on all three aft decks for those who prefer shade.

KEY FEATURES

- ◆ Full beam master suite on deck with private study and lounge area

Yachtzoo - Monaco (Principal)
Fort Lauderdale Florida
33016 United States

Paul Madden
M: +1 (561) 568-3430
paul@yacht-zoo.com
www.yacht-zoo.com

CARPE DIEM

- ◆ Flexible 4 or 5 stateroom layout below with two full beam VIP staterooms
- ◆ Full beam skylounge with alfresco dining for 12
- ◆ Engine rebuild in 2024 with 5-year Caterpillar warranty
- ◆ New generators 2023
- ◆ 15 knots cruising speed
- ◆ Exceptional volume and deck space thanks to her 10m/33' beam

CLASSIFICATION

| | |
|-----------------------|---|
| Class | ABS Maltese Cross A1 Commercial Yachting Service, |
| Flag | AMS |
| Port of Registry | Cayman Islands |
| IMO Number | George Town |
| Official Registration | 9590383 |
| | 742970 |

REGULATION

| | |
|--------------------------------|------------|
| Vessel Registration | Commercial |
| Built to Commercial Compliance | Yes |
| MARPOL Code | Yes |
| Full ISM | Yes |
| ISPS | Yes |
| MLC | Yes |

ACCOMMODATIONS

Interior Materials

The interior wood finish is primarily macassar ebony with ebony cherry trim with custom nickel railings throughout. The carpeting is 100% wool throughout the guest areas. Sheer draperies and light fabrics in neutral velvets and silks enhance the subtle yet glamorous ambiance on all levels.

Exterior Decks / Materials

All free-standing furniture has been constructed with exterior finishes, fabrics and leather. All built-in sideboards and dining tables have a high gloss finish. Trinity Yachts custom designed the stainless-steel railings with wooden cap rails with intricate curves on the spiral staircase to all decks as well as two-toned exterior paint job and added thirty eight underwater lights for spectacular night viewing. The custom white caulking on all exterior decks adds to the open, contemporary outdoor lifestyle and feel.

The central movie/music Kaleidescape server as well as lights and blinds are controlled by iPads found throughout the yacht. Crestron remote controls serve as backups to the Crestron

Foyer / Main Salon

The dramatic full-width main foyer offers access port and starboard. The flooring is pure white onyx in the bar area, there is carpet under the seating areas and dining table. Custom built-in cabinets run the length of the foyer on either side and are also topped in pure white onyx. The built in cabinets are topped in a matt finish timber. Vintage color photography of Marilyn Monroe graces the foyer (elsewhere all photography is black

and white).

Entering the main salon from the main aft deck is a wet bar to port topped with pure white onyx top, a Sub-Zero dual drawer refrigerator and icemaker, sink, extra storage and four stools with custom underneath lighting. The barstools are upholstered in metallic finished leather.

Forward are two sofas upholstered in silk velvet with satin accent pillows and two 100% leather antique custom Poltrona Tiza style chairs, in a creamy colored leather. There are two additional Art Deco upholstered chairs in grey velvet. The floor-to-ceiling island credenza conceals a pop-up Samsung 50-inch wide TV with Kaleidescape and surround sound.

The wool carpeting is bordered by pure white onyx. The Roman shades and the room-defining drapery on either side of the island credenza, separating the Main Salon from the Dining Salon, are made from the same softly silver sheer fabric.

Dining Salon

Forward of the island credenza is the macassar ebony wood dining table which seats twelve guests. The dining room overhead is palladium leafing and the lighting pendants are palladium leafed.

Main Deck Powder Room

The powder room is forward of the dining salon on the starboard side in the foyer with flooring of pure white onyx and bordered in black portoro marble. The gleaming walls are covered in natural golden color mother of pearl tiles. The overheads have mother of pearl palladium leafing.

Owner's Suite:

Private Study

Access is through double doors leading into the private study furnished with a desk to starboard with leather trim and drawers with silver pulls and pearl centers. The study offers the passing view from three large rectangular shaped portholes. Just to the side of the desk is a flat screen 26-inch Samsung TV. To port, is a sofa upholstered in silk camelhair velvet with silver-studded trim. The wall panels are leather wrapped.

Lounge

Forward of the study is the lounge area to starboard, separated from the king bed by an island credenza. The sofa is upholstered in velvet with an end table on either side. Two facing armchairs and a metallic pearl colored leather ottoman are in front of the sofa. The three large windows are behind the sofa with Roman shades.

Beside the credenza and aft is a desk with chair. The credenza conceals a 50-inch Samsung pop up TV with Kaleidescape and surround sound; the TV swivels 360 degrees.

Positioned athwartship to starboard opposite the owner's lounge is the king bed with a nightstand on either side, each with a lamp. The striking custom upholstered walls in silvery sateen fabric are diamond tufted upholstery in the Art Deco style. The remote-controlled headboard reveals three large windows for natural light with Roman shades. The bedding is silk charmeuse and the carpeting is a silk and wool blend. His and Her walk-in closets are located full width on the forward bulkhead; Hers contains the emergency escape. A refrigerator positioned centerline in front of the closets is cleverly concealed in the built-in dresser and has six drawers below. There is ample storage in the owner's suite

Her Bathroom

The sizable “Her” bathroom is located to port with Calcutta marble floor, countertop with sink, large shower and oversize whirlpool. The walls are tiled in white mother of pearl. Built-in cabinets provide plenty of storage and there is a large mirror over the sink. The bathroom has three large portholes above the Jacuzzi with Roman shades. A bidet is next to the toilet.

His Bathroom

“His” bathroom is located to starboard of her bathroom with light crystal onyx flooring, light crystal onyx countertop and light crystal onyx shower walls. The walls are tiled in white mother of pearl and there are built-in cabinets and a large mirror over the sink.

Main Deck Aft

The main aft deck boasts a full width built-in stern settee with two tables and six chairs for casual breakfasts or lunches. Forward is an aft facing sofa with two occasional tables and two armchairs and two additional tables on either side of the sofa. To port is a wet bar with white onyx bar top, Sub-Zero dual drawer refrigerator with icemaker, sink and extra storage faces aft. The front of the bar is upholstered in a tufted pattern of outdoor leather as are the port and starboard credenzas used for storage.

The main aft deck can be air-conditioned and heated for added comfort. Unique custom stainless steel railings with wooden cap rails surround the exterior of the deck as well as the spiral staircase leading up to the sundeck.

The swim platform is accessed by a stairway port and starboard. The swim platform doubles as a “beach” / lounge area with custom seating. The hydraulic passarelle is on the starboard side. When at anchor, tenders and toys are stationed on the stern.

Above the aft deck bar is a 46-inch Sakura outdoor TV with SAT receiver .

Accommodation (Lower) Deck

VIP King Suite Aft (2nd Master Suite)

Below aft is the full width VIP king suite with the king bed athwartships to port. The headboard and base are covered in De Le Cuona Eskimo velvet in color “Bear”. On either side of the bed is an onyx topped nightstand with lamp and drawers with silver pulls beneath. There are two oval portholes above the bed.

The fabrics are done in a rich honey color pallet with Art Deco-inspired patterns on the walls and accent pillows. A desk with a light crystal onyx top, leather trim and storage drawers with stainless steel pulls beneath is located on the forward bulkhead. Opposite the bed on the aft bulkhead is a double closet and built-in love seat. There is a 40-inch Samsung TV with SAT receiver and Kaleidescape. There are electric blinds and shades in both stateroom and bathroom.

The VIP bath to starboard has a light crystal onyx floor and counter tops with double sink, shower and whirlpool with two oval portholes above. The toilet and bidet are enclosed.

Guest King Stateroom (Starboard Aft Mid)

This stateroom features a king bed with Glant Silk velvet II in color “Sand 01” headboard and a nightstand with a lamp on either side. There are two oval portholes above the bed. The dresser with silver pulls and a desk, is located on the portside wall. A sofa is situated on the forward wall next to the closet with a 40-inch Samsung TV with SAT receiver and Kaleidescape.

The bathroom features light crystal onyx floor, countertop with double sink and shower.

Guest King Stateroom (Port Aft Mid)

This guest stateroom features a king bed with a velvet Gretchen Bellinger Glam I Am bamboo + cotton headboard and a nightstand on either side with a lamp. There are two oval portholes above the bed. On the starboard wall is a dresser with silver pulls and a desk. There is a 40-inch Samsung TV with SAT receiver and Kaleidescape.

The bathroom features dark brown antique stone floor, countertop with double sink and shower.

VIP King Suite Forward (Port Forward)

This stateroom is convertible as a third master suite in combination with the twin stateroom to starboard noted below. The staterooms have identical fabrics.

There are two oval portholes above the bed. On the forward bulkhead is a closet and a desk with white onyx top complete with a silver-studded leather upholstered chair and silver pulls. Embroidered sheer fabric on the two oval portholes coordinates with the accent pillows. There is a 40-inch Samsung TV with SAT receiver and Kaleidescape.

Aft of the bed is the bathroom finished with Italian white onyx floors, countertop with double sink and shower.

This stateroom features twin beds in an L-shaped layout as well as one Pullman berth. There is a nightstand with white onyx tops on either end with lamps. The headboard is Jean de Merry Style Stella. There are electric blinds and shades in the stateroom.

To starboard, at the entrance to the bathroom, is a closet with silver pulls; opposite is a desk. The bathroom has Calcutta Luccicoso stone floors, countertop and bath/shower with bath whirlpool jets.

The 40-inch Samsung TV with SAT receiver, Kaleidescape and surround sound, is mounted on the angled wall facing the beds.

Aft to port in the skylounge is the wet bar made of ebony macassar with ebony cherry trim. The floor behind the bar is honed white onyx as is the bar top. The five bar stools are finished in charcoal gray embossed leather, and there is a Sub-Zero refrigerator /icemaker, sink and extra storage behind the bar. There is a 32-inch Samsung TV with Kaleidescape, not linked to the Creston system.

To starboard is a game table with graphite color embossed leather top that seats six and an additional ottoman forward that seats two with lounge chairs upholstered in silk velvet. There are two antique Valerio chairs upholstered in an Art Deco inspired pattern fabric from Zimmer Rhode, style memory color "10347". A large custom U-shaped sectional with storage inside the sofa is upholstered in textural cotton velvet and faces forward. There are roman shades and draperies of a fine striped fringe sheer with blackout lining for privacy.

The forward bulkhead holds the entertainment system including a Sony 70-inch Bravia XPR TV with surround sound, and Kaleidescape.

The skylounge powder room is to port, aft of the Bridge and has white onyx floors, marble bowl sink, stainless steel towel rack, large mirror with stainless frame, and walls wrapped in leather. Opposite is a dual climate two door wine cellar with a capacity of 220 bottles and space for magnums and champagne presentation.

Going forward from the powder room on the starboard side is a hidden door which

contains an air-conditioned room that holds the AV, Crestron system and Kaleidescape, all on pull out racks, as well as satellite TV, Apple TV's and other TV systems.

Skylounge Aft Deck

The skylounge aft deck features a large rectangular table made of macassar ebony wood with seating for twelve guests, Calcutta marble countertops both port and starboard and custom stainless-steel handrails with wooden caps surrounding the exterior of the deck. There is full width built in seating on the stern with three separate tables which can seat fifteen guests at the table if necessary.

The skylounge aft deck can be air-conditioned over the dining table for added comfort.

Forward centerline is the large oval whirlpool with a marble surround. The huge sunbed on three sides provides an extensive area for sunbathing and lounging and includes four small removable marble drink tables. The entire whirlpool / sunbed area is protected by a smoked plexiglass windscreen which also adds privacy. This area can be protected from sudden showers – or readied for cruising – with a custom removable cover. Two generous sofas are built-in port and starboard aft of the whirlpool.

Under the arch to port is a large wet bar with Calcutta marble countertop and six barstools with a Sub-Zero dual drawer refrigerator and icemaker, sink and extra storage. Above the bar is a 46-inch outdoor Samsung TV with Kaleidescape. Under the hardtop to starboard is a casual conversation area with free-standing sofa and two chairs and two occasional tables. Brightly colored accent pillows are in abundance providing a dazzling flair of color.

Starboard aft forward of the central seating area is the air-conditioned generator room and a starboard aft is the powder room or day head which has a showerhead outside above the door.

Bridge / Portuguese Bridge

Access to the bridge is on both port and starboard. The captain's cabin is located port aft and furnished with a queen bed with black leather headboard, toilet and shower finished in Diano Reale stone. The cabin also features a desk and 32-inch Samsung TV with SAT receiver and Kaleidescape and also has additional screens linked to the vessel's CCTV and Transas via repeater.

Mozambique wood is used for the walls and built-ins.

Forward is a split guest observation banquette with seating for six in charcoal leather. The three helm chairs are also upholstered in charcoal leather and have stainless steel footrests. Visibility from the wheelhouse is excellent due to the large windows. The instrument console with state-of-the-art electronics and navigation equipment is finished in black leather with a black granite countertop. Black leather also covers the ceiling panels.

Behind the observation banquette are two computer stations for the first Officer and Purser, separated by a built-in cabinet with a granite countertop and ample storage below. Starboard aft is the GMDSS radio room.

Forward of the bridge outside is the Portuguese bridge with two facing settees each with a coffee table. This area is surrounded by stainless steel railings with varnished wooden cap rails. Centerline on the bow is the davit for the 2 x Sea-Doo Sparks and 2 x Yamaha wave runners housed on the bow.

Galley

The modern galley features statuary marble with cabinetry in shaded Mozambique wood with ebony cherry trim. Forward in the galley just aft of the chef's area is the countertop. The galley is equipped with the latest appliances including two MKN ovens, two Wolfe induction cooktops, Vulcan Salamander broiler, KitchenAid microwave, Delfield refrigerator, Cospolich walk-in freezer, Sub-Zero icemaker, one Miele dishwasher in the pantry and one Hobart dishwasher in the galley, coffee maker, ample counter space and storage, trash compactor and a dumbwaiter from the main to bridge deck.

Crew Quarters

The crew quarter area is forward of the guest accommodations on the lower deck and accessed through a staircase from the galley or walk-around decks. Crew accommodations allow for twelve (12) crew in six (6) cabins with the captain adjoining the bridge and the engineer's cabin located aft of the engine room.

Going down into the crew quarters portside is the laundry room with a single sink and three Miele stacked washer and dryers. As you exit the laundry room and continue heading starboard into the crew quarters you enter the crew lounge area with U-shaped seating with two built-in tables for dining. Crew lounge area is equipped with a GE microwave oven, a full-size Sub-Zero refrigerator, sink, and a 32-inch Samsung TV and Miele dishwasher.

Continuing forward are four crew cabins, each with upper and lower berths that sleep two crew per cabin. Each cabin has closets with shelves and an ensuite bathroom and shower.

Crew quarters provide direct access to guest staterooms and a private crew stairway leads to the galley and the pilothouse level.

CAPACITIES

| | | | | |
|----------------------|--------|--------|----------------------|-------------|
| Gross Tonnage | 749GT | | | |
| Net Tonnage | 224t | | | |
| Fuel Capacity | 87,774 | liters | 23,190 | USG |
| Day Tank | 16,056 | liters | 4,242 | USG |
| Fresh Water Capacity | 14,006 | liters | 3,700 | USG |
| Water Makers | 19,000 | liters | 5,000 x 2 | USG x 2 |
| Grey Water | 9,463 | liters | 2,500 | USG |
| Black Water | 1,605 | liters | 424 | USG |
| Lube Oil | 2,422 | liters | 640 | USG |
| Waste Oil | 1,926 | liters | 509 | USG |
| Sludge Water | 2,388 | liters | 631 | USG |
| | | Knots | Consumption p/h | Range RPM |
| Maximum Speed | 21 | | 1,260 l / 333 USG | 1,586 1,820 |
| Cruising Speed | 15 | | | 2,400 |
| Economical Speed | 13 | | | |
| Long Range | 10 | | 166 l / 44 USG | 5,000 900 |

MAIN MACHINERY

Yachtzoo - Monaco (Principal)
Fort Lauderdale Florida
33016 United States

Paul Madden
M: +1 (561) 568-3430
paul@yacht-zoo.com
www.yacht-zoo.com

CARPE DIEM

| | |
|-------------------------------------|--|
| Main Engines | 2 x Caterpillar 3516B Series II HD 3,384 HP each |
| Engine Hours (Oct. 2024) | Port: 15,400 Starboard:15,397 Both mains had a total rebuild in March 2024 and have a 5 year Caterpillar Platinum warranty approx. 500 hours since rebuild. Coverage is 5 years or 5,000 hours from effective date (6/14/2024) |
| Propulsion Type | Twin Screw |
| Engine Controls | Rexroth |
| Engines Exhaust System | Wet |
| Gear Boxes | Reintjes model WAF843 3.080:1 ratio (10 year service performed 2024) |
| Shafting | 6-in. dia. Aqualoy HS-22 shaft |
| Propellers | Veem, Nibral, 5-bld, 64-in dia. x 57.6-in pitch |
| GENERATORS & ELECTRICITY | |
| Output/Electricity | 80VAC, 3phase, 60Hz |
| Generators | 2 x 191KW Caterpillar C7, (new 2023, warranty until 8/10/2027) |
| Generator Hours (Oct. 2024) | Port:3625 Starboard:3791 |
| Generator Fuel Consumption | 10 USG per hour |
| Generator Exhaust System | Wet |
| Emergency Generator | 1 x 99kW Northern Lights Night Generator |
| Emergency Generator Hours | 440 |
| Load Bank | 1 x Sephco LSMC2Z-75LS480 (75kW) |
| Shore Power | 480 Volts / 3 Phase |
| Shore Power Converter | MAGNUS 200kva |
| Batteries | Main engine starting: 2 per engine Generator starting: 1 per engine |
| Battery Chargers | Mastervolt, 4 x 50-Amp, 2 x 100-Amp |
| Generator Start | Batteries starter |

AUXILIARY MACHINERY

| | |
|---------------------------------|---|
| Steering System | EMI |
| Steering Gear | Engine Monitoring, Inc. Dual x 5HP HPU FFU w/ Common Internally Baffled Tank |
| Bow Thruster | 200HP Quantum, single prop |
| Stabilizers | Quantum QC 1800 Zero Speed, fin size 4m ² |
| Under Water Lights | 38 x SeaVision HID AC powered |
| Helm/Wing Station Controls | Rexroth |
| Fuel Filters | Alfa Laval |
| Fuel Oil Separator | Alfa Laval |
| Fuel Transfer Pump | 2x gear pump |
| Fuel Filling Pump | Tender filling pump |
| Bunkering Station | Port and starboard |
| Dirty Oil Pump | Gear pump |
| Lubrication Oil Pump | Gear pump |
| Firefighting & Bilge System | Water mist system ULTRAFOG |
| Firefighting & Bilge Pump | Grundfos CRT16-5-P-A-E-AUUE |
| Bilge Water Filtration | Recovered Energy (Boss 2TY 107) |
| Fresh Water System | Aquathin Softener, Sanitron UV sterilizers |
| Fresh Water Makers | 2 x FCI Neptune NWMS0263X 5000 GPD |
| Watermaker GPG | 2 x 5,000 GPD |
| Fresh Water Treatment | Chlorine Dosing Pump - Fresh Water |
| Fresh Water Pressure | 4 Bar |
| Hot & Cold Circulation Pump | Headhunter |
| Hot Water Boilers | RHEEM Hot Water Heater - 3 - crew, galley and sundeck, 72 USG |
| Black & Grey Water System | Headhunter |
| Black & Grey Water Treatment | Headhunter |
| WC's (toilets/bidets) | Headhunter Royal Flush |
| Sanitary Water System | Headhunter |
| Black & Grey Water Pumps | Headhunter |
| Air Conditioning | Marine Air 60 Tons with Fresh Air Makeup System + 60kW heat |
| Air Compressor | 2x Powerex Scroll Compressors |
| Air Handling Units | 58 (new fan coils) |
| Provision Refrigeration | Walk in Fridge and Freezer |
| Engine Room AC | 2 x Bitzer compressor |
| Engine Room Ventilation | 2 Intake, 2 exhaust |
| Galley Ventilation & Extraction | Intake and extraction with closing damper |
| Hydraulic System | Quantum |
| Hydraulic Power Packs | 2x Main engine PTO, 2 electric motor pumps |

NAVIGATION & COMMUNICATION SYSTEMS

NAVIGATION SYSTEMS

Navigation Bridge

| | |
|------------------|---|
| X-Band Radar | 1 x Furuno X-band model no:FAR-2117-BB |
| S-Band Radar | 1 x Furuno S-band mno: FAR-2137S/2837S/2137S-BB |
| Laser Plotter | TRANSIS and Furuno Nav Net |
| Magnetic Compass | C-Plath |
| Gyrocompass | C-Plath |
| Auto Pilot | Sperry |
| Wind / Speed Log | B&G |
| Depth Sounder | B&G |
| GPS | 2 x Navigator GP-170 (new 2024) |
| AIS | 1 x Furuno FA-150 |
| Navtex | Furuno NX-700 |
| Horn | Kahlenberg F-3, Fig 513 Airhorn w/ N511A Fog Signal Timer & Horn Control |
| Search Lights | ACR RCL 600A |
| Ships Computer | Dell |
| Ships Printer | Epson ET 5800 |

COMMUNICATION SYSTEMS

| | |
|-------------------------------|--|
| VSATCOM | F-55 and VSAT |
| ECDIS | Transas 4000 |
| VHF | 6 x Furuno ICOM |
| Telephone System | Panasonic PBAX KX-TDA 200 |
| Cellular Phone System | 2 x Ericsson W25 Quad Band GSM with M Tech DF- AMP60 |
| Intercom System | Panasonic PBX |
| SSB | Furuno FS 1570 with coupler |
| GMDSS | Upgrades: I Sailor SAT-C I Sailor SSAS I Sailor LRIT system |
| Internal Ship's Communication | Integrated with Phone System |

DECK MACHINERY & EQUIPMENT

| | |
|------------------------|---|
| Anchors | 2 x Balanced Pool type |
| Anchor Chains | Per Class |
| Anchor Windlass System | 2 x Muir MVRC 15000 hydraulic with chain compressor |
| Warping Capstans | 2 x Muir hydraulic |
| Crane and Davits | 1 x Nautical Structures SOLAS, SWL 7500lb/4400kg |

| | |
|----------------------|---|
| | 1 x Nautical Structures SWL 1700lb/770kg |
| Passarelle | MARQUIPT 25' hydraulic |
| Side Boarding Ladder | Marquip |
| Swimming Platform | 1 x Freshwater hot/cold shower |
| | 2 x 30 Amp shore power for a tender |
| | 1 x 50 Amp shore power for a tender diesel |
| | Fueling station built into stern for tender refueling |
| | Teak and stainless-steel surrounds swim platform |

SAFETY, SECURITY, & FIRE FIGHTING EQUIPMENT

Security System

| | |
|---------------------------|--|
| CCTV | Digital Watchdog PC base Color System with 8 cameras |
| Cameras | PELCO |
| Monitors | Hatteland |
| Ship's Safe | X 8 |
| Fixed Firefighting System | Salwico |
| Firefighting Equipment | Kidde extinguishers |
| Alarms | Salwico |
| Life Rafts | 6 x USCG 12 XTREM NG SOLAS 94/96 |
| Lifejackets | Per Flag state |
| Life Rings | x 8 |
| EPIRB | x 2 |
| SART | x 2 |
| Flares and Signals | Orion |
| Medical Equipment | OMI |

ENTERTAINMENT, AUDIO/VISUAL AND IT SYSTEMS

The central movie/music Kaleidescape server with Crestron and iPad remote control, is accessible throughout the yacht inside and out.

iPads that control audio visual, lighting and blinds are located throughout the interior

| | |
|-----------------------------------|---|
| Main Salon | 1 x Pop-up Samsung 50-inch-wide vision TV |
| Private Study | 1 x Flat screen 26-inch Samsung TV |
| Master Stateroom | 1 x Pop-up Samsung 50-inch-wide vision TV with surround sound |
| VIP King Suite (Aft) | 1 x 40-inch Samsung TV |
| VIP King Suite (Forward) | 1 x 40-inch Samsung TV |
| King Guest Stateroom (Stbd. Aft) | 1 x 40-inch Samsung TV |
| King Guest Stateroom (Port Aft) | 1 x 40-inch Samsung TV |
| Twin Guest Stateroom (Stbd. Fwd.) | 1 x 40-inch Samsung TV |
| Sundeck | 1 x 46-inch Outdoor Samsung TV |
| Skyounge | 1 x 32-inch Samsung TV |

| | |
|-------------------|--|
| Skyounge Aft Deck | 1 x 46-inch Outdoor Samsung TV |
| Forward Bulkhead | 1 x 80-inch Samsung TV with surround sound |
| Main Deck Aft | 1 x 46 inch Outdoor Sakura TV |
| Captain's Cabin | 1 x 32-inch Samsung TV |
| Crew Lounge | 1 x 32-inch Samsung TV |

*Note – all TV's are "smart" with inputs for Apple TV 1, 2 and local Kaleidescape and SAT TV, etc.

GALLEY & LAUNDRY EQUIPMENT

Main Galley Equipment

| | |
|-----------------|--------------------------------|
| Ovens | 2 x WKN |
| Cooktop | 2 x Wolf |
| Salamander | 1 x Vulcan salamander and hood |
| Microwave | 1 x KitchenAid |
| Refrigeration | 1 x Delfield |
| Freezer | 1 x Cospolich walk-in |
| Icemaker | 1 x Sub-Zero |
| Dishwashers | 1 x Miele 1 x Hobart |
| Trash Compactor | 1 x KitchenAid |

Crew Galley / Mess Equipment

| | |
|-------------------------|---------------------------------------|
| Microwave | 1 x GE |
| Refrigeration | 1 x Full height Sub-Zero |
| Dishwasher | 1 x Miele |
| Refrigeration / Freezer | Delfield / Cospelich |
| Other | Dumbwaiter to upper crew service area |
| Main Washing Machine | 3 x Miele stacked washer/dryers |
| Crew Washing Machine | 1 x Miele stacked washer/dryers |

OTHER EQUIPMENT

| | |
|---------------|------------------------------|
| Gym Equipment | Weight bench Free weights |
|---------------|------------------------------|

TENDERS & TOYS

| | |
|-------------------|--|
| Tenders | 6m (20') RIB X Inflatable tender/rescue boat with Yanmar 4LV 195 hp inboard engine |
| Water Toys | 2 x Yamaha wave runners 2 x Sea-Doo Sparks |
| Diving Compressor | Clark Yacht Compressor |

2021 SHIPYARD PERIOD

- ◆ Ten-year special survey
- ◆ Propellor, shaft removal, reconditioned and reinstalled
- ◆ Shaft seals, bearings removed, renewed and installed

- ◆ Rudder removal, bearing removal, renewed and reinstalled
- ◆ Bow thruster removed, port and starboard chains removed and reinstalled
- ◆ Hull sea valves (x 58) removed, renewed and installed
- ◆ Light weight and stability survey
- ◆ Foredeck and sundeck cranes serviced

2022 SHIPYARD PERIOD

- ◆ Port and starboard Quantum stabilizer system serviced
- ◆ 2 x New CAT -C7.1 MGSW generators supplied and installed
- ◆ New exhaust system to new CAT generators installed
- ◆ 54 x New AC fan coils supplied and installed
- ◆ Engine room bilge manifold system reconditioned
- ◆ 10 x Engine room bilge manifold actuators supplied and installed
- ◆ Port and starboard freshwater tanks abrasive blasted and coated
- ◆ Grey water tanks abrasive blasted and coated
- ◆ Black water tanks abrasive blasted and coated
- ◆ Areas of the superstructure painted
- ◆ 2 x MKN ovens, Hobart dishwasher and drawer refrigerator installed

2023/24 SHIPYARD PERIOD

- ◆ New Magnus shore power converter
- ◆ New Triton technical survey
- ◆ New teak decking for swim platform
- ◆ Port and starboard main engine major overhaul
- ◆ Main engines rebuild including new crank shafts with 5-year Caterpillar warranty

EXCLUSIONS

Exclusions include all of Owner's personal effects and artwork. A detailed list of inventory and exclusions will be provided pursuant to a purchase agreement.

DISCLAIMER

All speeds, capacities, consumption, hours, measurements, etc. are approximate or estimated. Specifications provided for information only as particulars herein obtained are from sources available but are not guaranteed. Remarks and other statements may be personal opinions and may not be relied upon. Interested parties should instruct his/her agent/supervisor to check all details for accuracy.

Disclaimer

Any yachts offered are subject to still being available. Their particulars are believed correct, but their contents are not guaranteed, neither may they be used for contractual purposes. All speeds, measurements, capacities, consumptions, etc., may be approximate or estimated. Specifications provided for information only. Data was obtained from sources believed to be reliable and is not guaranteed by Owner or Brokers. Buyer assumes the responsibility to ascertain the correctness of all data contained herein and otherwise provided and must instruct his agent and surveyors to confirm all details for accuracy prior to purchase. Subject to prior sale, price and inventory change, or withdrawal from market without notice.

Main Deck Aft Looking Forward



Main Deck Looking Aft



Main Deck Aft Looking To Starboard



Wet Bar To Port



Main Salon Looking Forward To Port



Main Dining Salon Looking Forward To Port



Main Salon Looking Aft



Full-Width Main Deck Foyer Looking To Starboard



Guest Lobby Starboard Side Looking Forward



Master Study Starboard Side Looking Forward



Master Stateroom Lounge Starboard Side Looking Forward



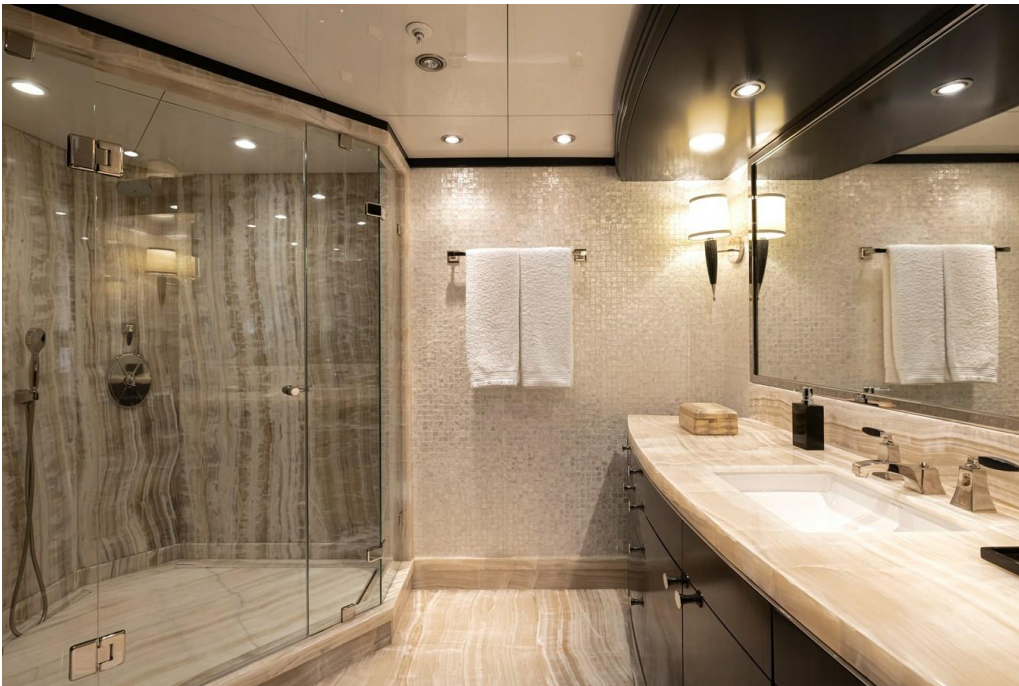
Master Stateroom Port Side Looking To Port



Her Bath Port Side



His Bath Amidship



VIP Suite (Second Master Suite) Portside Looking To Port



VIP Suite (Second Master Suite) Looking Forward To Port



VIP Suite (Second Master Suite) Bath



Double Guest Stateroom Portside Looking Forward



Double Guest Stateroom Portside Bath



Double Guest Stateroom Starboard Side Looking Forward



Double Guest Stateroom Starboard Side Bath



VIP Stateroom Looking To Starboard



VIP Stateroom Looking Aft To Starboard



VIP Stateroom Bath



Bridge Looking To Port



Skylounge Looking Forward



Skylounge Looking Aft to Starboard



Skylounge Bar Portside



Bridge Deck Aft Looking Forward To Port



Bridge Deck Dining Looking Forward To Starboard



Bridge Deck Aft Dining Looking To Starboard



Bridge Deck Aft Lounging Area Looking To Port



Bow Seating Area Looking To Port



Sundeck Whirlpool And Sunpads Looking Aft



Sundeck Whirpool And Sunpads Looking Forward



Sundeck Bar And Seating Area Looking Aft



Sundeck Bar And Seating Area Looking Forward To Port



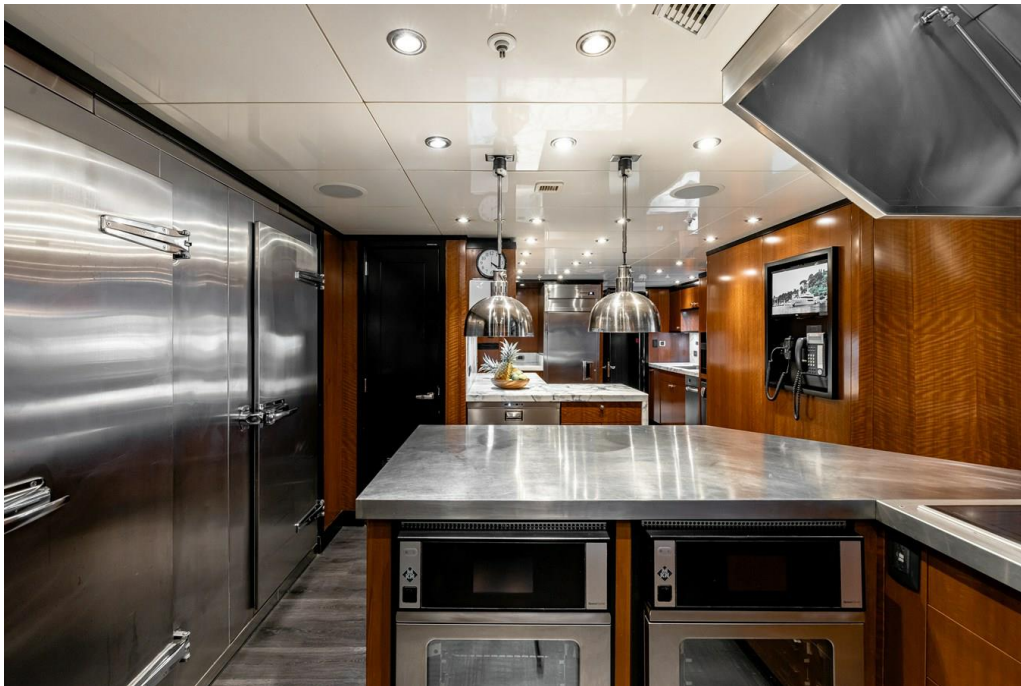
Sundeck Exercise Equipment Looking Aft To Starboard



Pantry



Galley



Crew Mess



Laundry



Yachtzoo - Monaco (Principal)
Fort Lauderdale Florida
33016 United States

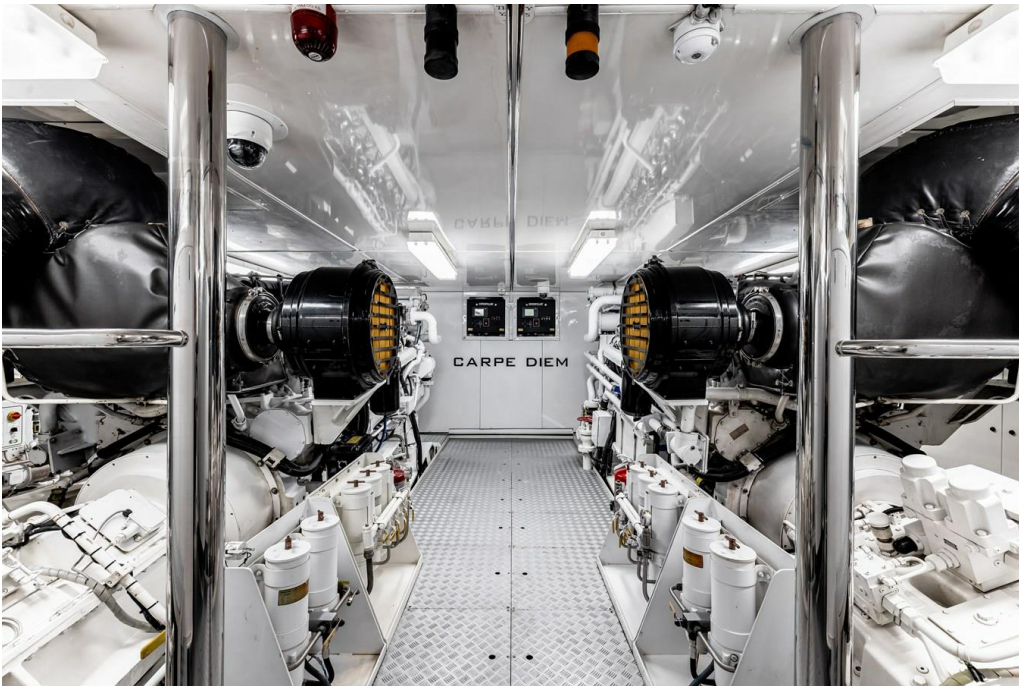
Paul Madden
M: +1 (561) 568-3430
paul@yacht-zoo.com
www.yacht-zoo.com

CARPE DIEM

Engine Control Room And Workshop



Engine Room



Swim Platform



Tender Operations



Tender Operations



Underway



Yachtzoo - Monaco (Principal)
Fort Lauderdale Florida
33016 United States

Paul Madden
M: +1 (561) 568-3430
paul@yacht-zoo.com
www.yacht-zoo.com

CARPE DIEM

CARPE DIEM And Tender



Aerial

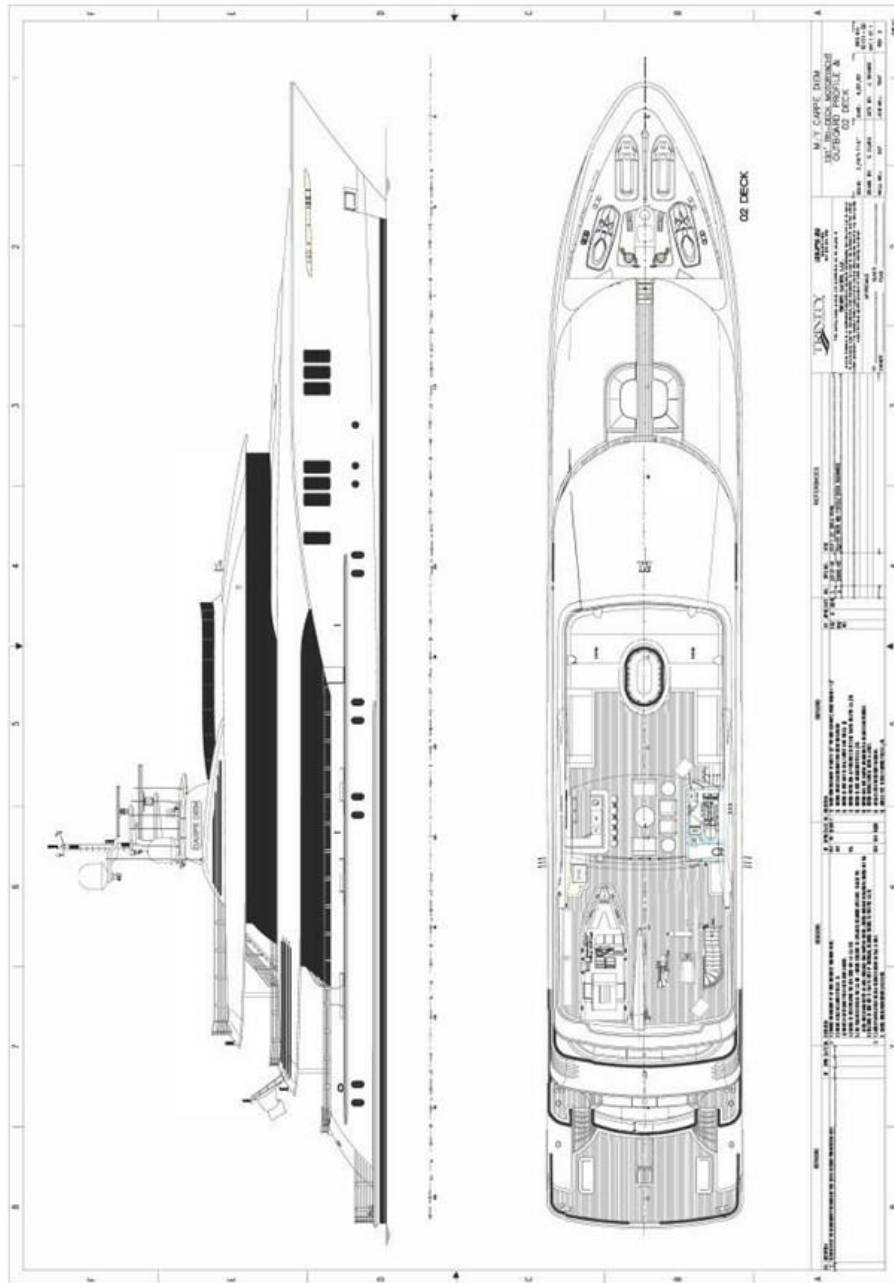


Yachtzoo - Monaco (Principal)
Fort Lauderdale Florida
33016 United States

Paul Madden
M: +1 (561) 568-3430
paul@yacht-zoo.com
www.yacht-zoo.com

CARPE DIEM

General Arrangement Plan



General Arrangement Plan

