

MOONSTONE



2021 AMELS

LOA:	197' (60.05m)	Delivery/Model	2021
Beam:	35' (10.64m)	Year:	
Max Draft:	11' 3" (3.4m)	Model:	Limited Edition
Tonnage:	1,015.00	Builder:	AMELS
Speed:	13.5 Knots 15.5 Knots	Type:	Motor Yacht
Flag:	Cayman Islands	Staterooms:	6
Location:	Palm Beach, Florida United States	Fuel Cap:	151300 L (39969.23 Gal)
VAT Paid:	No Duty Paid	Water Cap:	24650 L (6511.84 Gal)
Price:	(\$78,808,093 USD est.) €74,900,000 EUR	Engines:	2x, MTU, 12V4000M53, 1850 HP

Additional Specifications For MOONSTONE:

LOA:	197' (60.05m)	Delivery/Model	2021
Beam:	35' (10.64m)	Year:	
Max Draft:	11' 3" (3.4m)	Year Built:	2021
Hull Material:	Steel	Builder:	AMELS
Superstructure:	Aluminum	Model:	Limited Edition
Hull Designer:	Damen Yachting	Type:	Motor Yacht
Deck Material:	Teak	Engines:	1850 HP, Twin, 2021, Inboard, MTU, 12V4000M53, 4106hrs / 4078hrs
Tonnage:	1,015.00	Staterooms:	6
Range At Cruise	4500	Sleeps:	12
Speed:		Captain Cabin:	Yes
Range At Max		Classifications:	
Speed:	Cruising 13.5 Knots	MCA:	Yes
Speed:	Max 15.5 Knots	ISM:	
Int Designer:	Luxury Projects		
Ext Designer:	Tim Heywood		
Fuel Capacity:	151300 L (39969.23 Gal)		
Water Capacity:	24650 L (6511.84 Gal)		
Holding Tank:	12100 L (3196.48 Gal)		
Flag:	Cayman Islands		
Location:	Palm Beach, Florida United States		
Price:	(\$78,808,093 USD est.) €74,900,000 EUR		
Tax Status:	No Duty Paid		

DETAILED SALES SPECIFICATIONS

MAIN SPECIFICATIONS

Length Overall: 60.0m (197')
Length at Waterline: 57.3m (188')
Beam: 10.62m (34'11")
Draft: 3.4m (11'2")
Year Completed: 2021
Model Year: 2021
Type: Motor Yacht
HIN: 188-03
Tonnage: 1015 GT
Displacement: 100% condition =963(t)
Guests: 12
Crew: 14

CONSTRUCTION

Builder: Amels
Naval Architect: Damen Yachting
Exterior & Interior Design/Stylist: Tim Heywood/Luxury Projects
Hull Material: Steel
Superstructure Material: Aluminum
Deck Material: Teak
Classification: Lloyds Register

SPEED

Maximum: 15.5kts
Cruising: 13.5Kts
Economical: 12.0Kts
Range: 4,500NM
Consumption @ Cruising: 360L/H

CAPACITIES

Fuel: 151.30m³ / 151,300L
Water: 24.65m³ / 24,650L
Grey Water: 22.23m³ / 22,230L
Black Water: 12.10m³ / 12,100L
Lube Oil Capacity: 3.57m³ / 3,570L
Waste Oil Capacity: 1.67m³ / 1,670L
Sludge Tank: 4.01m³ / 4,010L

CLASSIFICATION & CERTIFICATIONS

Flag: Cayman Islands
MCA: LY3
Classification: Lloyds Register, 100 A1 SSC Yacht Mono G6, LMC, UMS, SCM

MACHINERY

MAIN ENGINES

Engine Type: 2 X MTU 12V4000M53, 1380 KW @ 1800 RPM (1850HP)
Horsepower: 2760 KW / 3700 HP
Engine Serial Numbers: Port: 526 110 237 Starboard: 526 110 236
Main Engine Hours (Port): 4,106 hrs. (June 2024)
Main Engine Hours (Stbd): 4,078 hrs. (June 2024)

GENERATORS & ELECTRICITY

Output: 203 kWe and 250 kWe
Generators: 2 X SCANIA DI 09 074M (203 kWe/250 kWe)

Yachtzoo - Monaco (Principal)
Fort Lauderdale Florida
33016 United States

Paul Madden
M: +1 (561) 568-3430
paul@yacht-zoo.com
www.yacht-zoo.com

MOONSTONE

Generator Fuel Consumption: 60% Load 35 lts/hrs
Port Generator Hours: 8,448 hrs. (June 2024)
Starboard Generator Hours: 8,365 hrs. (June 2024)
Shore power: 400VAC and 400 Amps
Emergency: SISU 49 CTAG (107 kW)

BATTERIES

Batteries: Magnus Hybrid Installation
Emergency: 4 x 12V-225 Ah Capacity – 450Ah

PROPULSION & STEERING

Gearboxes for Main Engines: REINTJES WAF 763 HL/HR 5,136:1
Stabilizer: Quantum QC-1800 HD XT Zero Speed
Stabilizer Underway: YES
Stabilizer at Anchor: YES
Steering System: DataHidrolik DDS 2X2000

OTHER MACHINERY

Water Makers: Idromar model - IDMG Duplex Auto
Water Softeners: SpotZero model: SZHD5000Z
Bow Thruster: Jastram Hardware Code - 130 225 1483 Kompr
Fuel Separator and Filtration: GEA Westfalia model OTC2-02-137
Sewage System: Hamann HL-Cont PLUS 025
Fresh Water System: GN705025 O.F. no 111718122-11/18
Oily Water Separator: Facet model - CPB-2.5B MKIII + EBM 14x1
Air Compressor: Kaeser rotary screw compressor SX 8T
Air Conditioning: Heinen & Hopman System 9GE-60Y-35P

ELEVATOR

Dimensions: HML 300kg-3 person (Lower deck to Sundeck)
Dumbwaiter: 150 kg Capacity

COMMUNICATION AND NAVIGATIONAL EQUIPMENT

PILOTHOUSE

SAT COM: Cobham Sailor 6110
Telephone System: Cisco
VHF: Sailor 6222 Cobham
Intercom: Stentofon
Navtex: Sailor 6390

NAVIGATION SYSTEMS

Radar: Raytheon Synapsis Nautoscan NX
Gyrocompass: Raytheon STD222
Magnetic Compass: Cassen & Plath
Auto Pilot: Nauto Pilot 5000
Depth Sounder: ESN 200 Echo sounder and WASSP
GPS: Sailor 6004 Cobham
Ships Computer: Synapsis Intelligent Bridge Control
Electronic Charts: ECDIS Raytheon NX and Time Zero
Wind/Speed Log: Lambrecht Meto
Transducer: WASSP Multi-beam 160kHz F3X transducer

ENTERTAINMENT SYSTEMS

Starlink: Starlink Maritime
VSAT1: Inmarsat C Sailor 6018
VSAT2: Inmarsat C Sailor 6018
Main Salon: 98" TV; Video on Demand, Blue-ray/DVD, Apple TV

Yachtzoo - Monaco (Principal)
Fort Lauderdale Florida
33016 United States

Paul Madden
M: +1 (561) 568-3430
paul@yacht-zoo.com
www.yacht-zoo.com

MOONSTONE

Bridge Deck Lounge: 98" TV; Video on Demand, Blue-ray/DVD, Apple TV
Sundeck Lounge: 49" TV; Video on Demand, Blue-ray/DVD, Apple TV
Beach Club: 49" TV; Video on Demand, Blue-ray/DVD, Apple TV
Owners Cabin: 55" TV; Video on Demand, Blue-ray/DVD, Apple TV
Owners Office: 49" TV; Video on Demand, Blue-ray/DVD, Apple TV
Guest Cabin: 43" TV; Video on Demand, Blue-ray/DVD, Apple TV
Captain's Cabin: 43" TV; Video on Demand, Blue-ray/DVD, Apple TV
Crew Mess: 49" TV; Video on Demand, Blue-ray/DVD, Apple TV

MAIN GALLEY EQUIPMENT

Cooktop: Rational
Oven: Rational Combi Master Plus XS x2
Microwave: Panasonic
Refrigerator/ Freezer: Liebherr Premium
Refrigerator: Liebherr ProfiPremium-Line
Freezer: Fridina
Additional Refrigerator/Freezer: Fridina BV Installation no: F0045-154749/99
Dishwasher: Hobart FP-10B
Ice Maker: Scotsman ACM 45

CREW GALLEY/ MESS

Fridge: Liebherr ProfiLine
Dishwasher: Miele Professional Speed Plus

BEACH CLUB

Fridge: Vitrifrigo Beverage fridge

SUNDECK

Fridge: Frigonautica Beverage fridge

LAUNDRY

Washing Machines: Miele Model PWM908
Dryers: Miele Model PDR908EL

OTHER EQUIPMENT

Jacuzzi: Aquademi 2.6m x1.6m whirlpool equipped with a jet pump, air blower, circulation pump, and underwater lighting.
Ship's Safe: x10 safes aboard, all guest cabins, owners, and captain's cabin
Wine Fridge: EuroCave V-Pure-M 200 Bottle Capacity

DECK EQUIPMENT

Anchor Windlass: Muir VRC 18000 Anchor Windlass (2)
Aft Warping Capstans: Muir 2x Electric single speed
Anchors: Wortelboer 2 x HHP Galvanized Steel 585kg
Anchor Chain: Wortelboer 165m HHP Galvanized Steel
Boat Crane and Davits: Van Driel 3.000kg SWL 19.6 tmf jib crane
Passarelle: Cramm

GYM EQUIPMENT

Recline Bike: Technogym PERSONAL CARDIO RECLINE LIVE
Bike: Technogym BIKE PERSONAL LIVE
Equipment: Technogym Bench and dumbbell's

TENDER & TOYS

1x Pascoe 6.2m SOLAS rescue Tender
2x Wave Runner

SECURITY, FIRE FIGHTING AND SAFETY EQUIPMENT

SECURITY

CCTV System: IP Based VBH
Cameras: 8 (6 Fixed)
Monitors: ECR, Bridge, Crew Mess

FIRE FIGHTING EQUIPMENT

Fire Control System: Marioff Consilium – Hi Fog
Fire Extinguishers: Survitec
Alarms: Marioff

SAFETY EQUIPMENT

Life Rafts: Survitec RDF Surviva 25
Life Rings: Survitec x8
EPIRBs: Sailor x 2
Flares: Pains Wessex x12
Medical Equipment: MSOS 1124 Class A

ACCOMMODATION AND LAYOUT

Owner: 2 Guests in Main Deck master with Balcony
Guests: 10 Guests x1 Bridge deck VIP and x4 lower deck guest
Crew: 14 crew members including captain, in x2 single and x6 double cabins

DISCLAIMER

The Company offers the details of this vessel in good faith but cannot guarantee or warrant the accuracy of this information nor warrant the condition of the vessel. A buyer should instruct his agents, or his surveyors, to investigate such details as the buyer desires validated. This vessel is offered subject to prior sale, price change, or withdrawal without notice.

Disclaimer

Any yachts offered are subject to still being available. Their particulars are believed correct, but their contents are not guaranteed, neither may they be used for contractual purposes. All speeds, measurements, capacities, consumptions, etc., may be approximate or estimated. Specifications provided for information only. Data was obtained from sources believed to be reliable and is not guaranteed by Owner or Brokers. Buyer assumes the responsibility to ascertain the correctness of all data contained herein and otherwise provided and must instruct his agent and surveyors to confirm all details for accuracy prior to purchase. Subject to prior sale, price and inventory change, or withdrawal from market without notice.

MOONSTONE



MOONSTONE



Yachtzoo - Monaco (Principal)
Fort Lauderdale Florida
33016 United States

Paul Madden
M: +1 (561) 568-3430
paul@yacht-zoo.com
www.yacht-zoo.com

MOONSTONE

MOONSTONE



Beach Club



Yachtzoo - Monaco (Principal)
Fort Lauderdale Florida
33016 United States

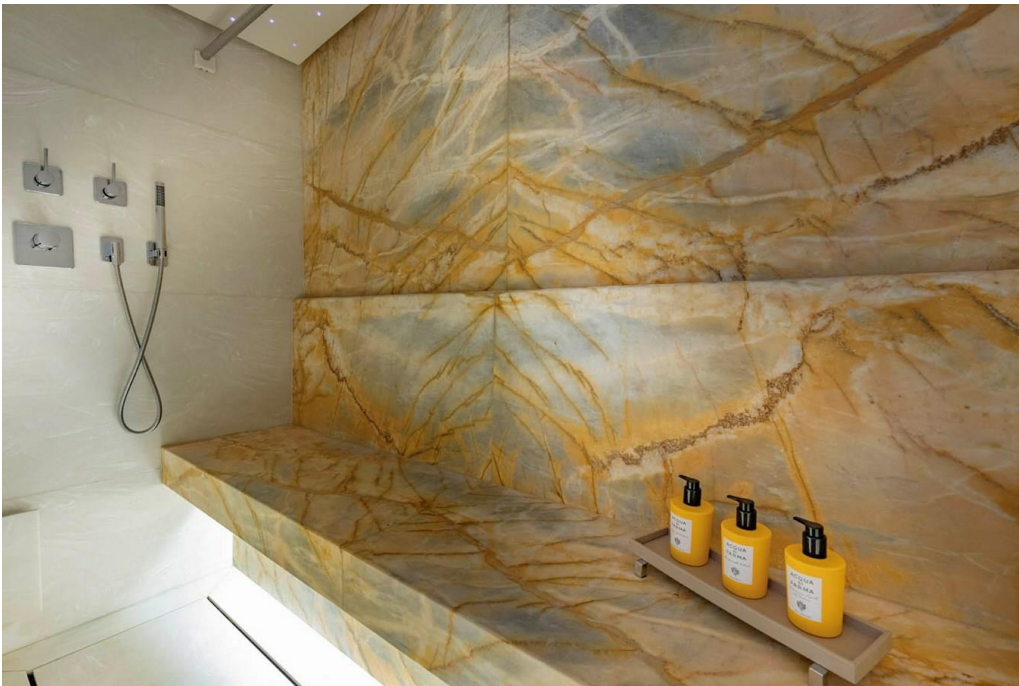
Paul Madden
M: +1 (561) 568-3430
paul@yacht-zoo.com
www.yacht-zoo.com

MOONSTONE

Beach Club



Beach Club Steam Shower



Aft Deck



Aft Deck



Aft Deck



Salon



Salon



Salon



Dining



Master



Yachtzoo - Monaco (Principal)
Fort Lauderdale Florida
33016 United States

Paul Madden
M: +1 (561) 568-3430
paul@yacht-zoo.com
www.yacht-zoo.com

MOONSTONE

Master



Master Balcony



Yachtzoo - Monaco (Principal)
Fort Lauderdale Florida
33016 United States

Paul Madden
M: +1 (561) 568-3430
paul@yacht-zoo.com
www.yacht-zoo.com

MOONSTONE

Master Office



Master Dressing Room



Yachtzoo - Monaco (Principal)
Fort Lauderdale Florida
33016 United States

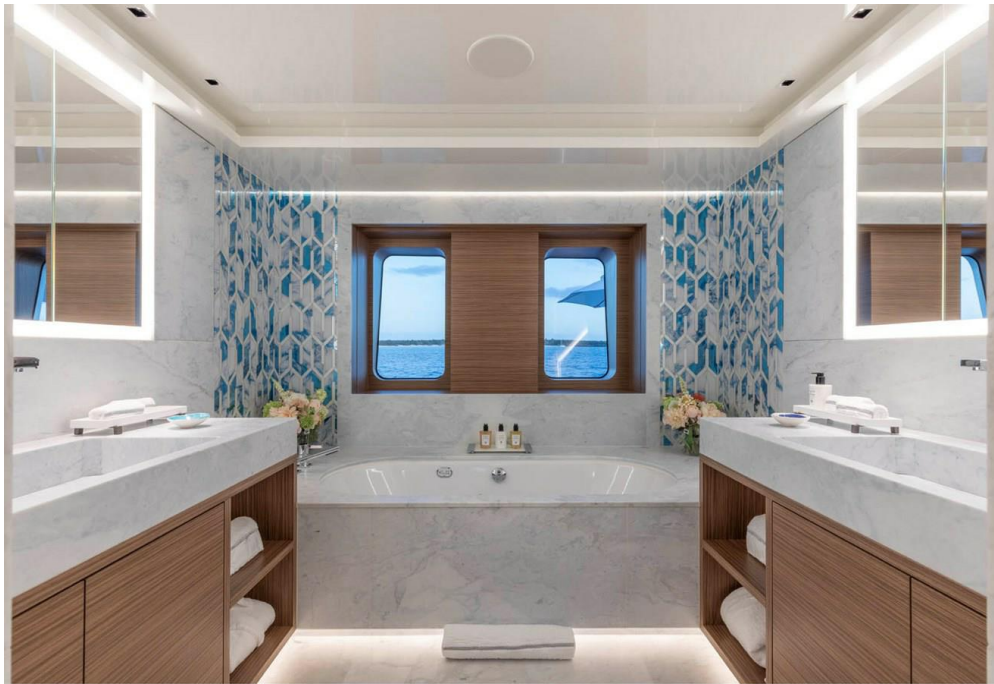
Paul Madden
M: +1 (561) 568-3430
paul@yacht-zoo.com
www.yacht-zoo.com

MOONSTONE

Master Bath



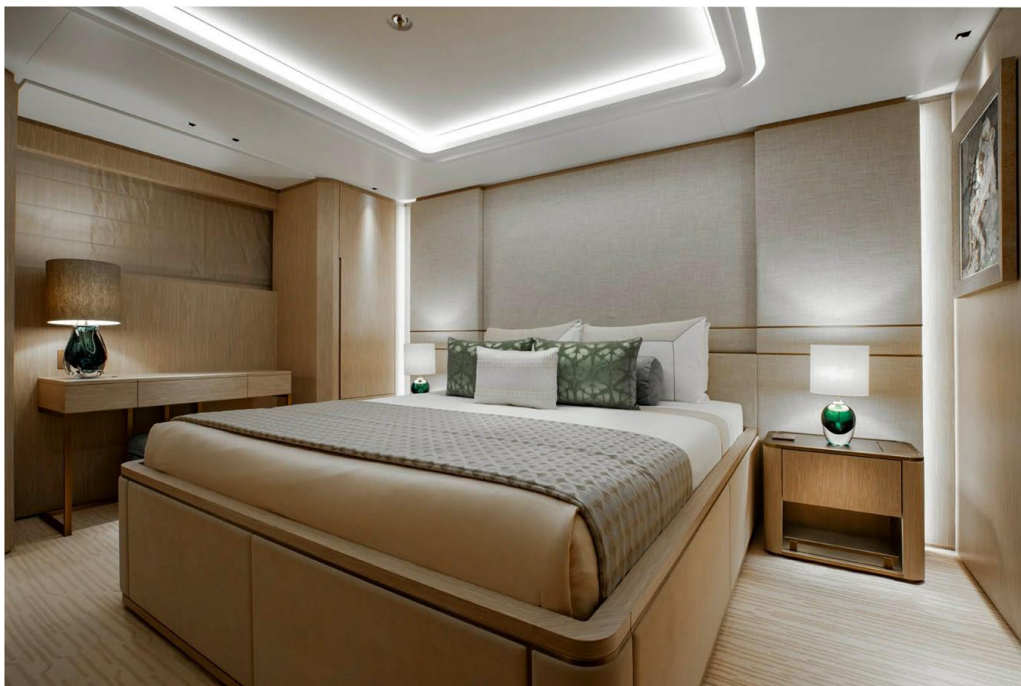
Master Bath



Master Bath



Guest 1



Guest 1 Bath



Guest 2



Guest 2 Bath



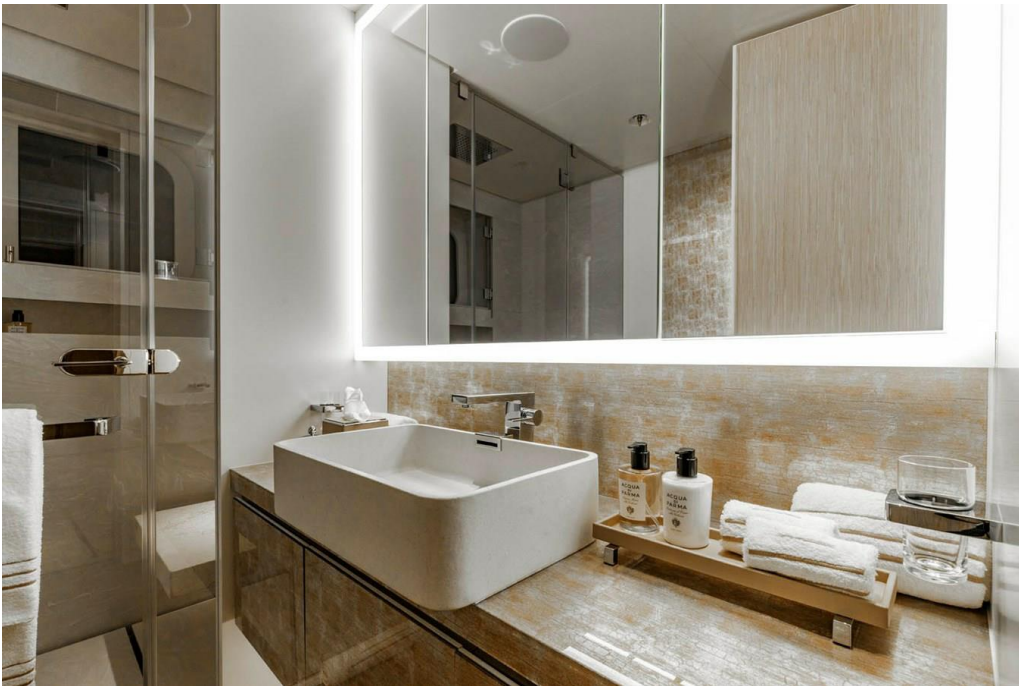
Guest 2 Bath



Guest 3



Guest 3 Bath



Guest 4



Guest 4 Bath



Bridge Deck Aft



Bridge Deck Aft



Bridge Deck Dining



Bridge Deck Salon



Yachtzoo - Monaco (Principal)
Fort Lauderdale Florida
33016 United States

Paul Madden
M: +1 (561) 568-3430
paul@yacht-zoo.com
www.yacht-zoo.com

MOONSTONE

Bridge Deck Salon



Bridge Deck Guest

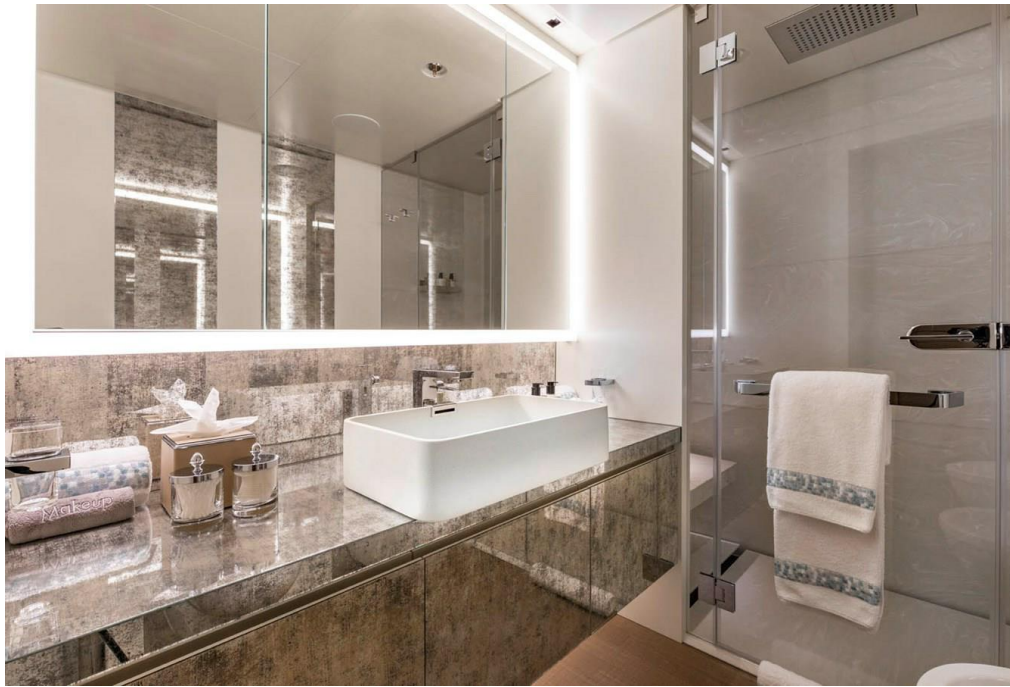


Yachtzoo - Monaco (Principal)
Fort Lauderdale Florida
33016 United States

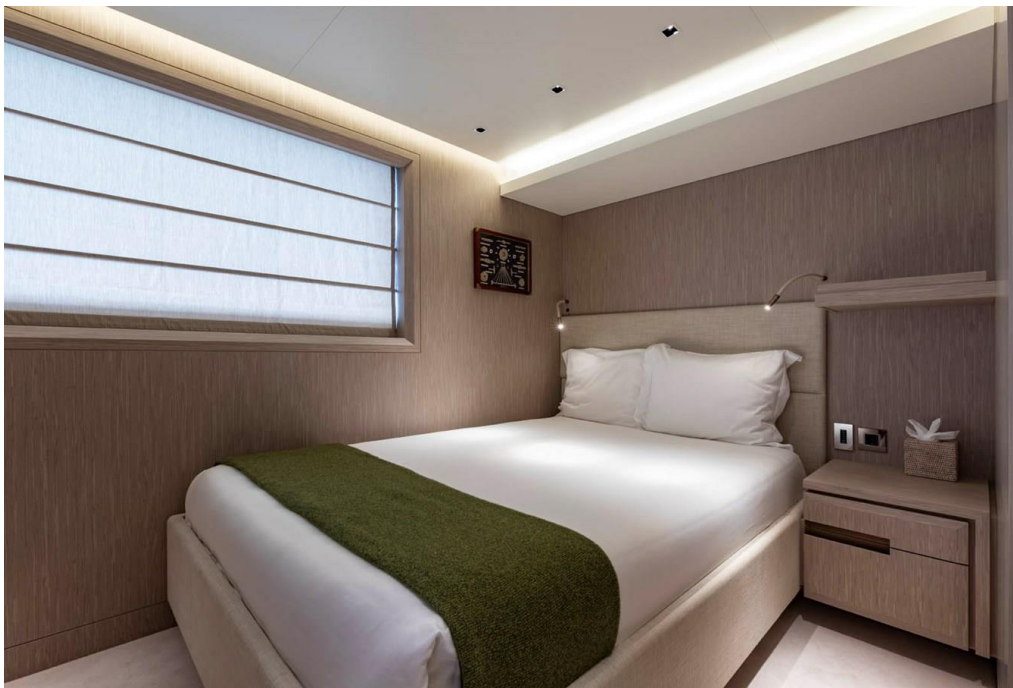
Paul Madden
M: +1 (561) 568-3430
paul@yacht-zoo.com
www.yacht-zoo.com

MOONSTONE

Bridge Deck Guest Bath



Captain's Cabin



Yachtzoo - Monaco (Principal)
Fort Lauderdale Florida
33016 United States

Paul Madden
M: +1 (561) 568-3430
paul@yacht-zoo.com
www.yacht-zoo.com

MOONSTONE

Captain's Bath



Bridge



Sun Deck Aft



Sun Deck Aft



Sun Deck Dining



Sun Deck Gym



Yachtzoo - Monaco (Principal)
Fort Lauderdale Florida
33016 United States

Paul Madden
M: +1 (561) 568-3430
paul@yacht-zoo.com
www.yacht-zoo.com

MOONSTONE

Sun Deck Massage Room



Sun Deck Elevator



Yachtzoo - Monaco (Principal)
Fort Lauderdale Florida
33016 United States

Paul Madden
M: +1 (561) 568-3430
paul@yacht-zoo.com
www.yacht-zoo.com

MOONSTONE

Sun Deck



Sun Deck Jacuzzi



Yachtzoo - Monaco (Principal)
Fort Lauderdale Florida
33016 United States

Paul Madden
M: +1 (561) 568-3430
paul@yacht-zoo.com
www.yacht-zoo.com

MOONSTONE

Sun Deck



Sun Deck



MOONSTONE



MOONSTONE



Yachtzoo - Monaco (Principal)
Fort Lauderdale Florida
33016 United States

Paul Madden
M: +1 (561) 568-3430
paul@yacht-zoo.com
www.yacht-zoo.com

MOONSTONE